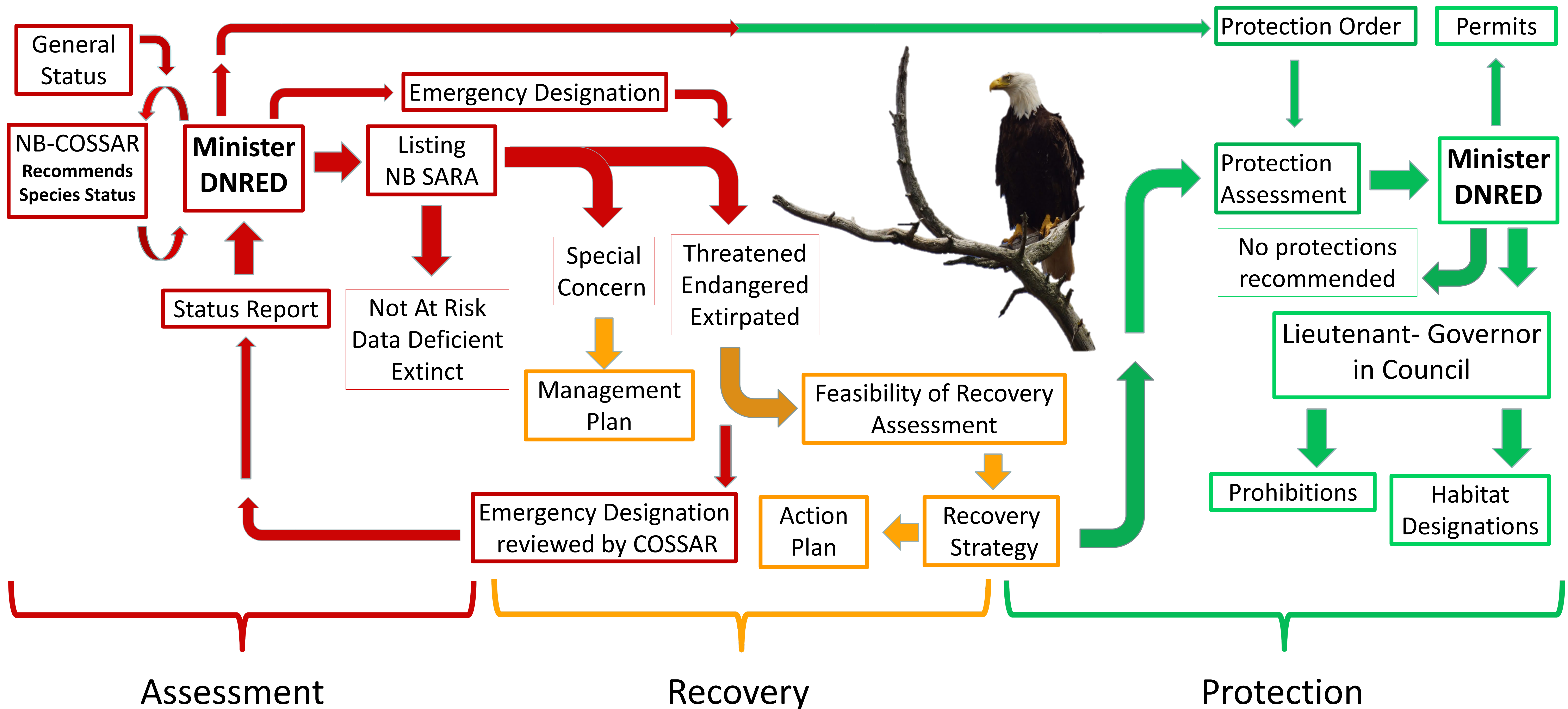


# New Brunswick Species at Risk Act- Process Map



## Routine practices that provide protection

- Land-use Reviews (Crown Land leases and licence of occupations, wetland and watercourse alteration permits, environmental impact assessments).
- Conservation Officers at the Department of Public Safety are made aware of sensitive areas and infractions.
- Species At Risk considerations are included in Forest Management Plans.