

Wheaton Lake / Lac Wheaton

Charlotte County / Comté de Charlotte

*Southwest Recreational Fishing Area /
Zone de Pêche Récréative de Sud-Ouest*

45°09'45.2"N 66°59'48.1"W

Wheaton Lake / Lac Wheaton

Note: *The following maps are not designed for navigation purposes. Please exercise caution when using these maps as some shoals may not appear.*

Remarque: *Les cartes suivantes ne sont pas conçues à des fins de navigation. Faites preuve de prudence lors de l'utilisation de ces cartes, car certains hauts-fonds peuvent ne pas apparaître.*

<u>Lake Characteristics</u>	<u>Caractéristiques du lac</u>
Surface Area : 104.0 hectares / 257.0 acres Maximum Depth : 12.0 metres / 39 feet	Superficie : 104.0 hectares / 257.0 acres Profondeur maximale: 12.0 mètres / 39 pieds

<u>Species Present</u>	<u>Espèce Présente</u>
Sport Fish Landlocked Salmon Smallmouth Bass	Poisson sportif Ouananiche Achigan à petite bouche
Non-Sport Fish American Eel Banded Killifish Ninespine Stickleback Northern Redbelly Dace White Perch	Poisson non sportif Anguille d'Amérique Fondule barré Épinoche à neuf épines Ventre rouge du nord Baret

This lake is currently part of the fish stocking program (Landlocked Salmon).

Ce lac fait actuellement partie du programme d'empoissonnement (Ouananiche)

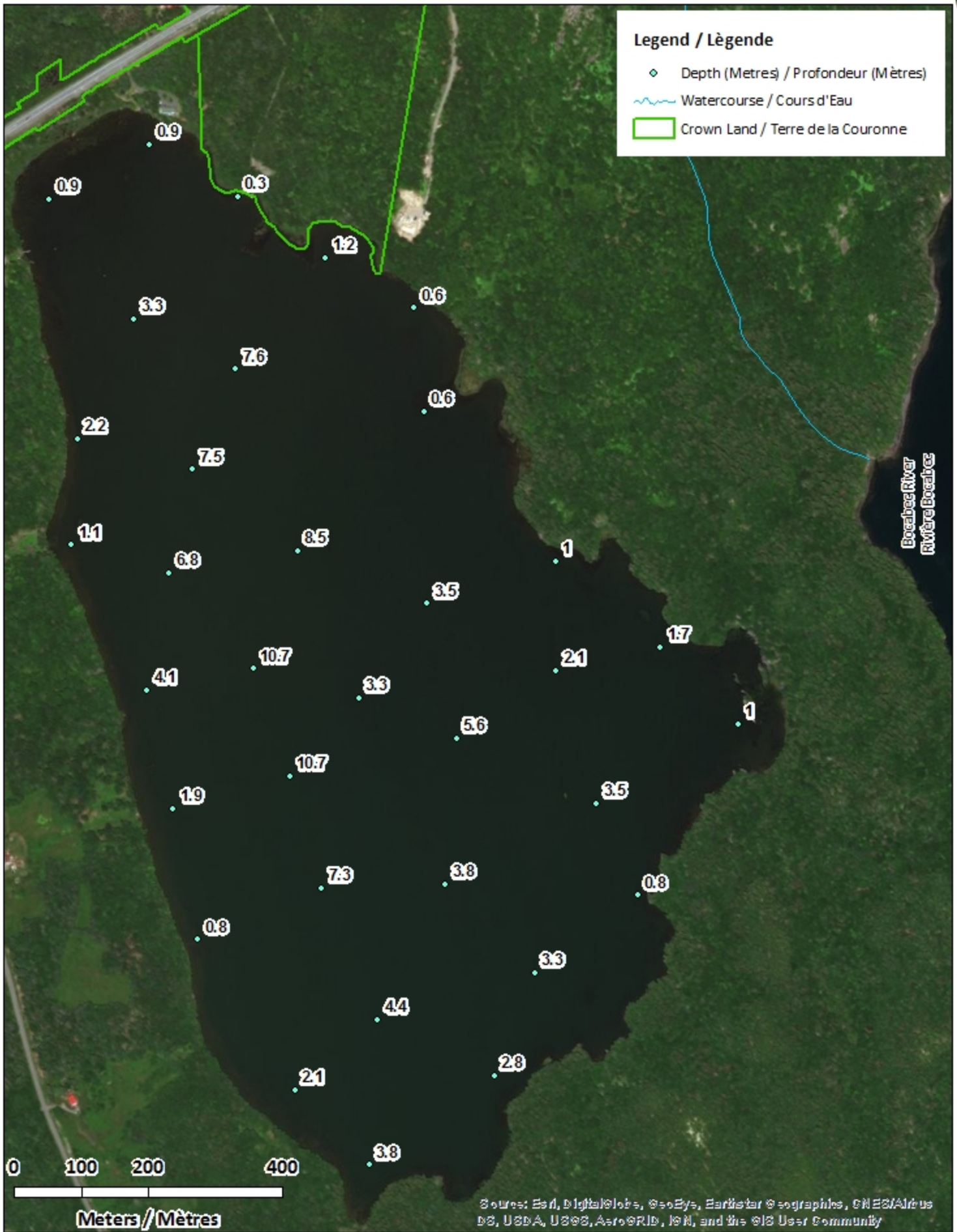
Wheaton Lake / Lac Wheaton

Depth Readings (Metres) / Indications de Profondeur (Mètres)



Legend / Légende

- ◆ Depth (Metres) / Profondeur (Mètres)
- ~ Watercourse / Cours d'Eau
- Crown Land / Terre de la Couronne



Sources: Esri, DigitalGlobe, GeoEye, Earthstar Geographics, CNES/Airbus DS, USDA, USGS, AeroGRID, IGN, and the GIS User Community

Wheaton Lake / Lac Wheaton

Contours (Metres / Mètres)



Legend / Légende

- Contours (Metres / Mètres)
- Watercourse / Cours d'Eau
- Crown Land / Terre de la Couronne




Wheaton Lake / Lac Wheaton

Depth (Metres) / Profondeur (Mètres)












Legend / Légende

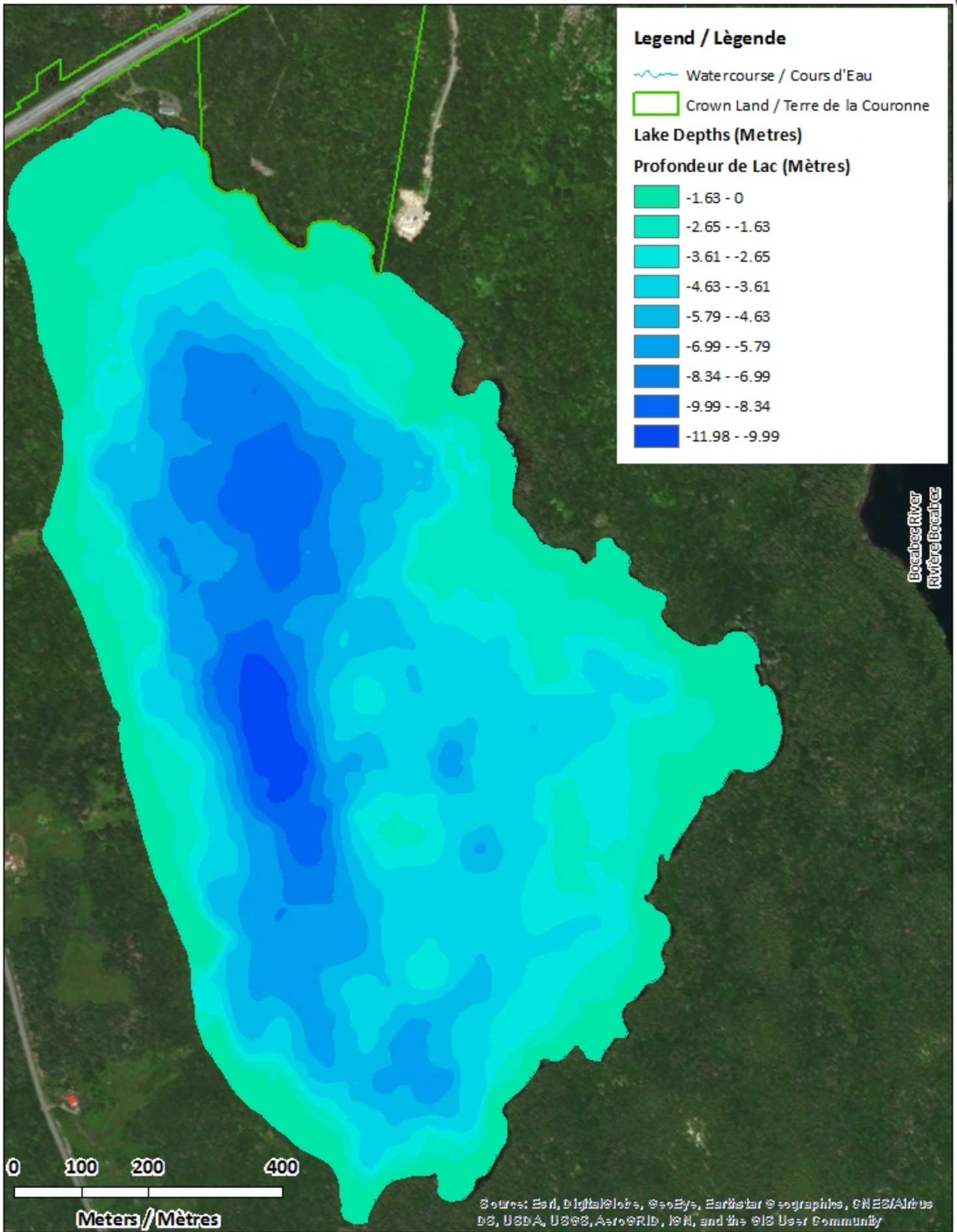
 Watercourse / Cours d'Eau

 Crown Land / Terre de la Couronne

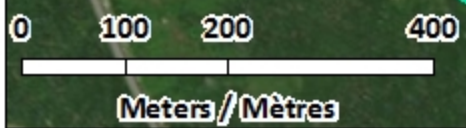
Lake Depths (Metres)

Profondeur de Lac (Mètres)

	-1.63 - 0
	-2.65 - -1.63
	-3.61 - -2.65
	-4.63 - -3.61
	-5.79 - -4.63
	-6.99 - -5.79
	-8.34 - -6.99
	-9.99 - -8.34
	-11.98 - -9.99



Beaubien River
Rivière Beaubien



Source: Esri, DigitalGlobe, GeoEye, Earthstar Geographics, CNES/Airbus DS, USDA, USGS, AeroGRID, IGN, and the GIS User Community

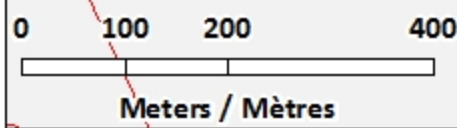
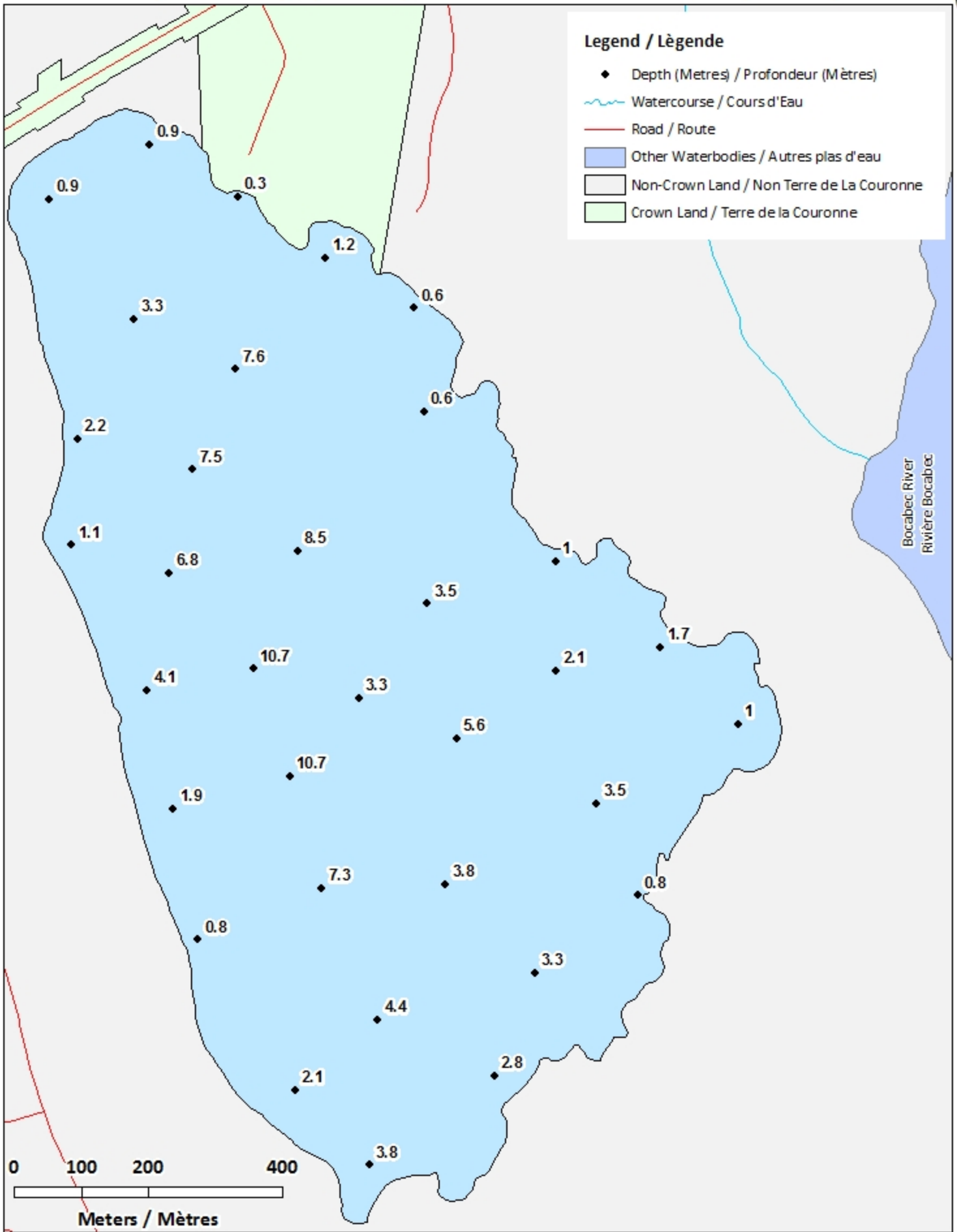
Wheaton Lake / Lac Wheaton

Depth Readings (Metres) / Indications de Profondeur (Mètres)



Legend / Légende

- ◆ Depth (Metres) / Profondeur (Mètres)
- ~ Watercourse / Cours d'Eau
- Road / Route
- Other Waterbodies / Autres plas d'eau
- Non-Crown Land / Non Terre de La Couronne
- Crown Land / Terre de la Couronne



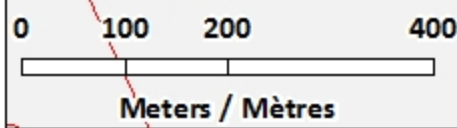
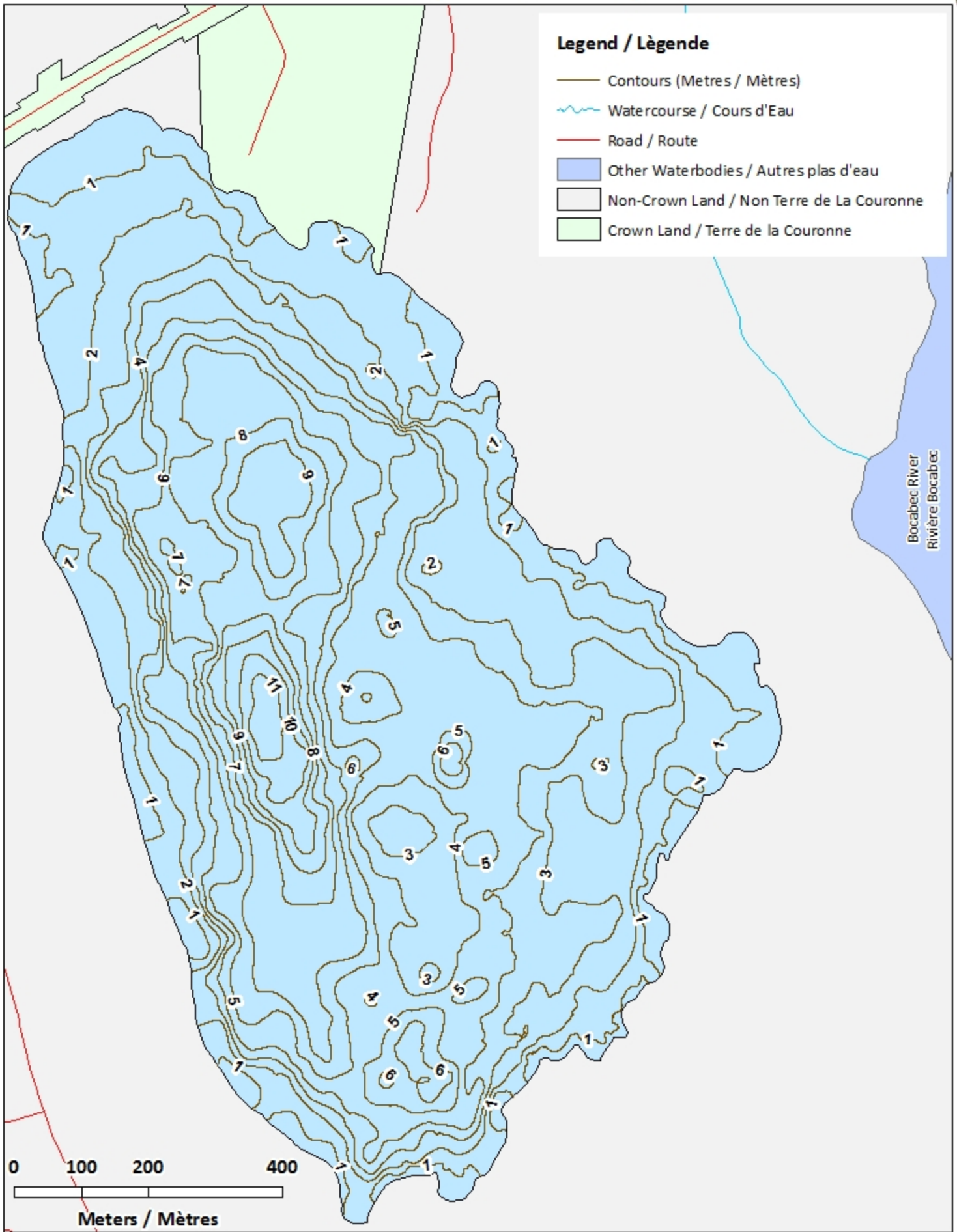
Wheaton Lake / Lac Wheaton

Contours (Metres / Mètres)



Legend / Légende

- Contours (Metres / Mètres)
- ~ Watercourse / Cours d'Eau
- Road / Route
- Other Waterbodies / Autres plas d'eau
- Non-Crown Land / Non Terre de La Couronne
- Crown Land / Terre de la Couronne




Wheaton Lake / Lac Wheaton

Depth (Metres) / Profondeur (Mètres)





Legend / Légende

 Watercourse / Cours d'Eau

 Road / Route


 Other Waterbodies / Autres plas d'eau

 Non-Crown Land / Non Terre de La Couronne


 Crown Land / Terre de la Couronne

Lake Depths (Metres)


Profondeur de Lac (Mètres)


 -1.63 - 0


 -2.65 --1.63


 -3.61 --2.65


 -4.63 --3.61

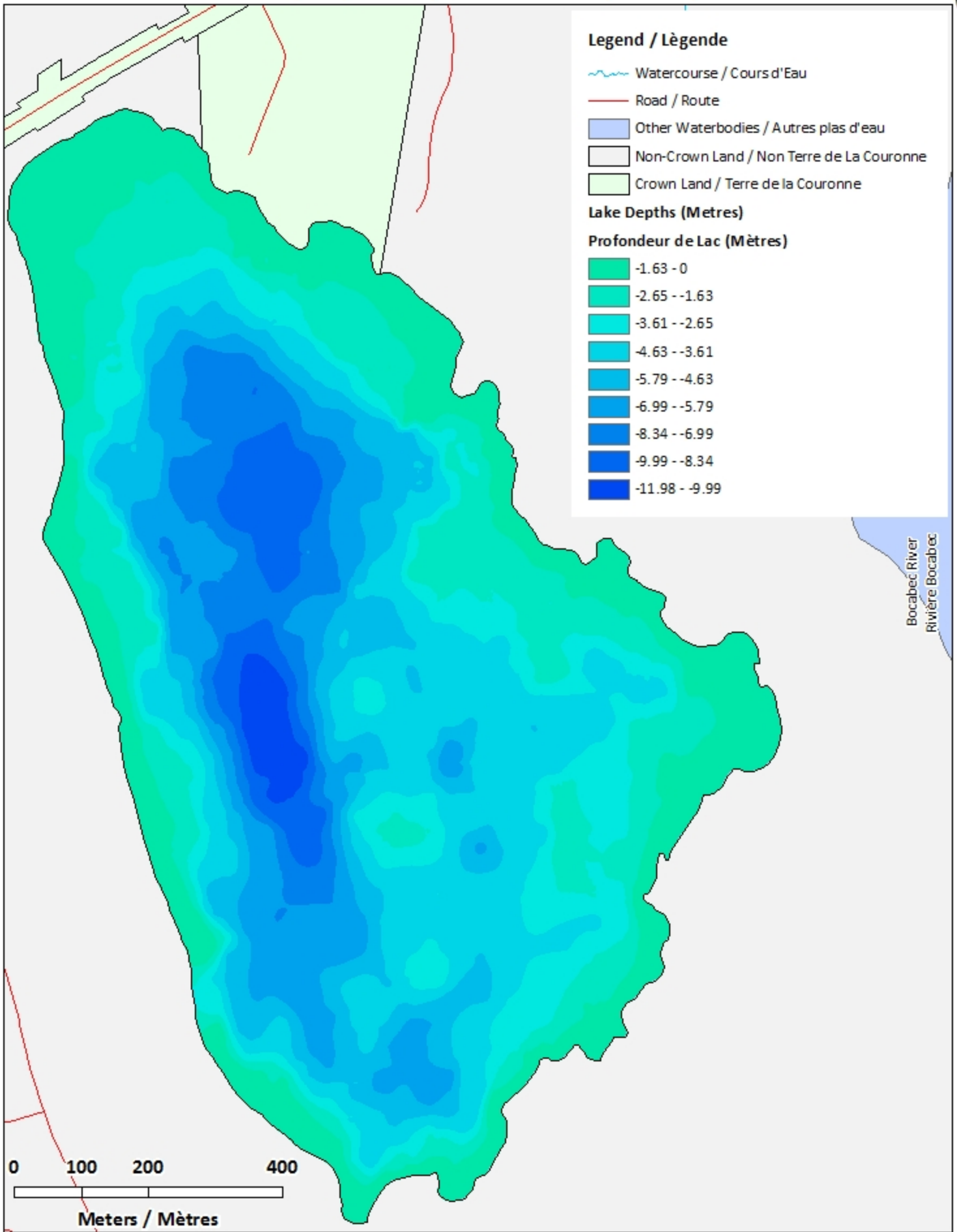
 -5.79 --4.63

 -6.99 --5.79

 -8.34 --6.99

 -9.99 --8.34

 -11.98 - -9.99



Bocabec River
Rivière Bocabec

