

Victoria Lake / Lac Victoria

Charlotte County / Comté de Charlotte

*Southwest Recreational Fishing Area /
Zone de Pêche Récréative de Sud-Ouest*

45°19'44.1"N 66°37'27.7"W

Victoria Lake / Lac Victoria

Note: *The following maps are not designed for navigation purposes. Please exercise caution when using these maps as some shoals may not appear.*

Remarque: *Les cartes suivantes ne sont pas conçues à des fins de navigation. Faites preuve de prudence lors de l'utilisation de ces cartes, car certains hauts-fonds peuvent ne pas apparaître.*

<u>Lake Characteristics</u>	<u>Caractéristiques du lac</u>
Surface Area : 228.5 hectares / 564.6 acres Maximum Depth : 8.2 metres / 27 feet	Superficie : 228.5 hectares / 564.6 acres Profondeur maximale : 8.2 mètres / 27 pieds

<u>Species Present</u>	<u>Espèce Présente</u>
Sport Fish Brook Trout	Poisson sportif Truite mouchetée (Ombles de fontaine)
Non-Sport Fish American Eel Common Shiner Creek Chub Lake Chub Ninespine Stickleback Northern Redbelly Dace White Sucker	Poisson non sportif Anguille d'Amérique Méné à nageoires rouges Mulet à cornes Méné de lac Épinoche à neuf épines Ventre rouge du nord Meunier noir

This lake is not part of the fish stocking program.

Ce lac ne fait pas partie du programme d'empoissonnement.

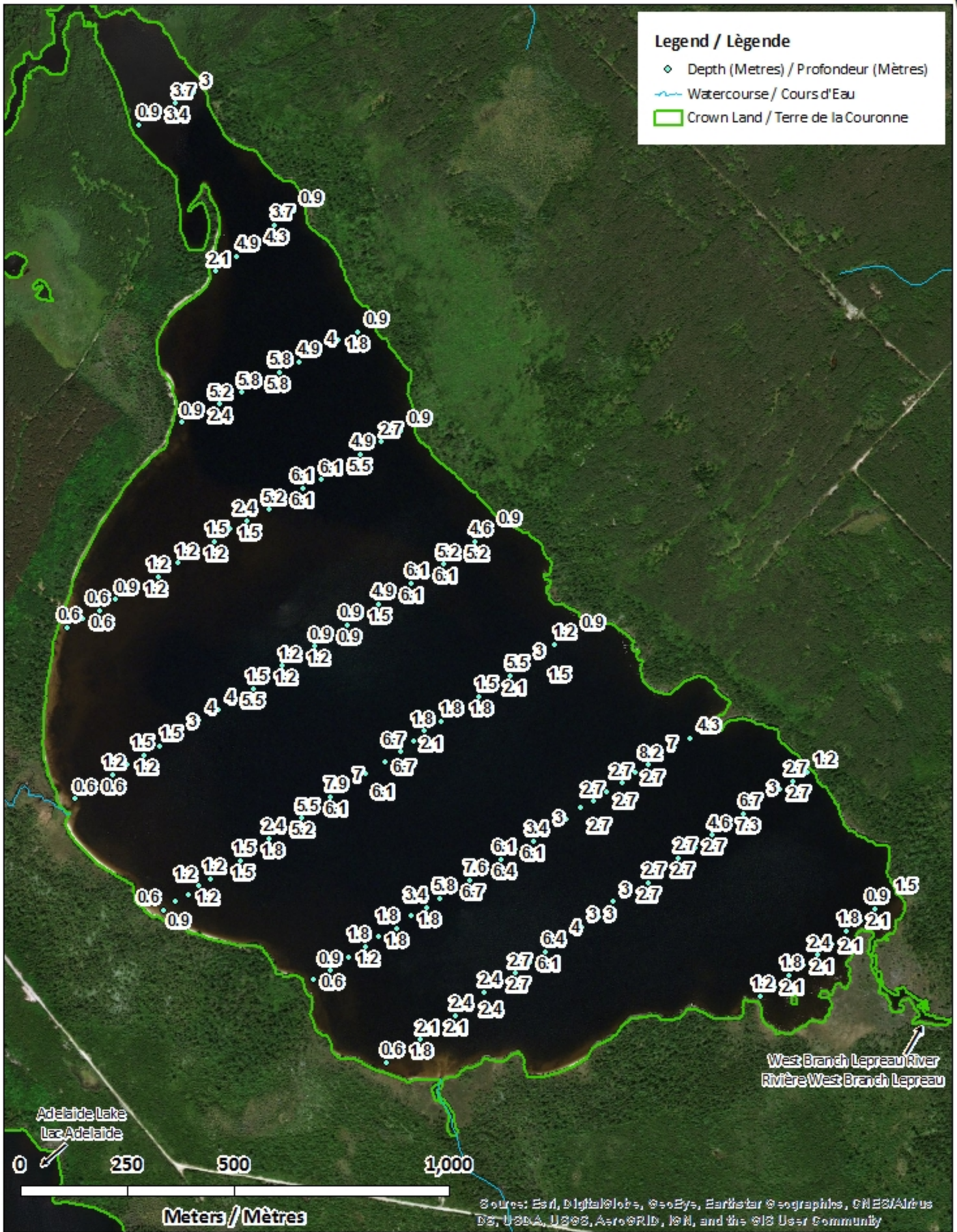
Victoria Lake / Lac Victoria

Depth Readings (Metres) / Indications de Profondeur (Mètres)



Legend / Légende

- ◆ Depth (Metres) / Profondeur (Mètres)
- Watercourse / Cours d'Eau
- Crown Land / Terre de la Couronne



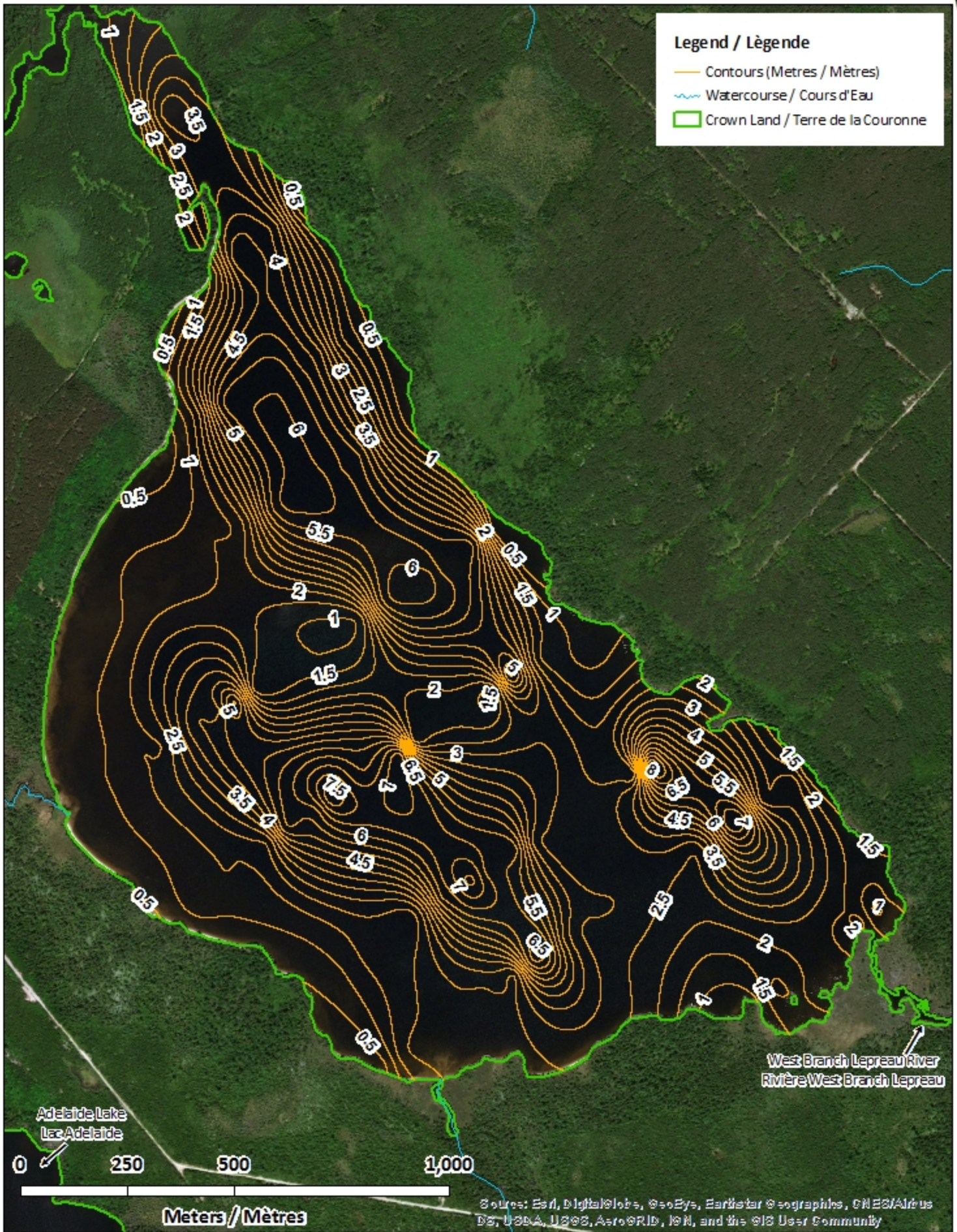
Victoria Lake / Lac Victoria

Contours (Metres / Mètres)



Legend / Légende

- Contours (Metres / Mètres)
- Watercourse / Cours d'Eau
- Crown Land / Terre de la Couronne



West Branch Lepreau River
Rivière West Branch Lepreau

Adelaide Lake
Lac Adelaide

0 250 500 1,000

Meters / Mètres



Source: Esri, DigitalGlobe, GeoEye, Earthstar Geographics, CNES/Airbus DS, USDA, USGS, AeroGRID, IGN, and the GIS User Community

Victoria Lake / Lac Victoria

Depth (Metres) / Profondeur (Mètres)












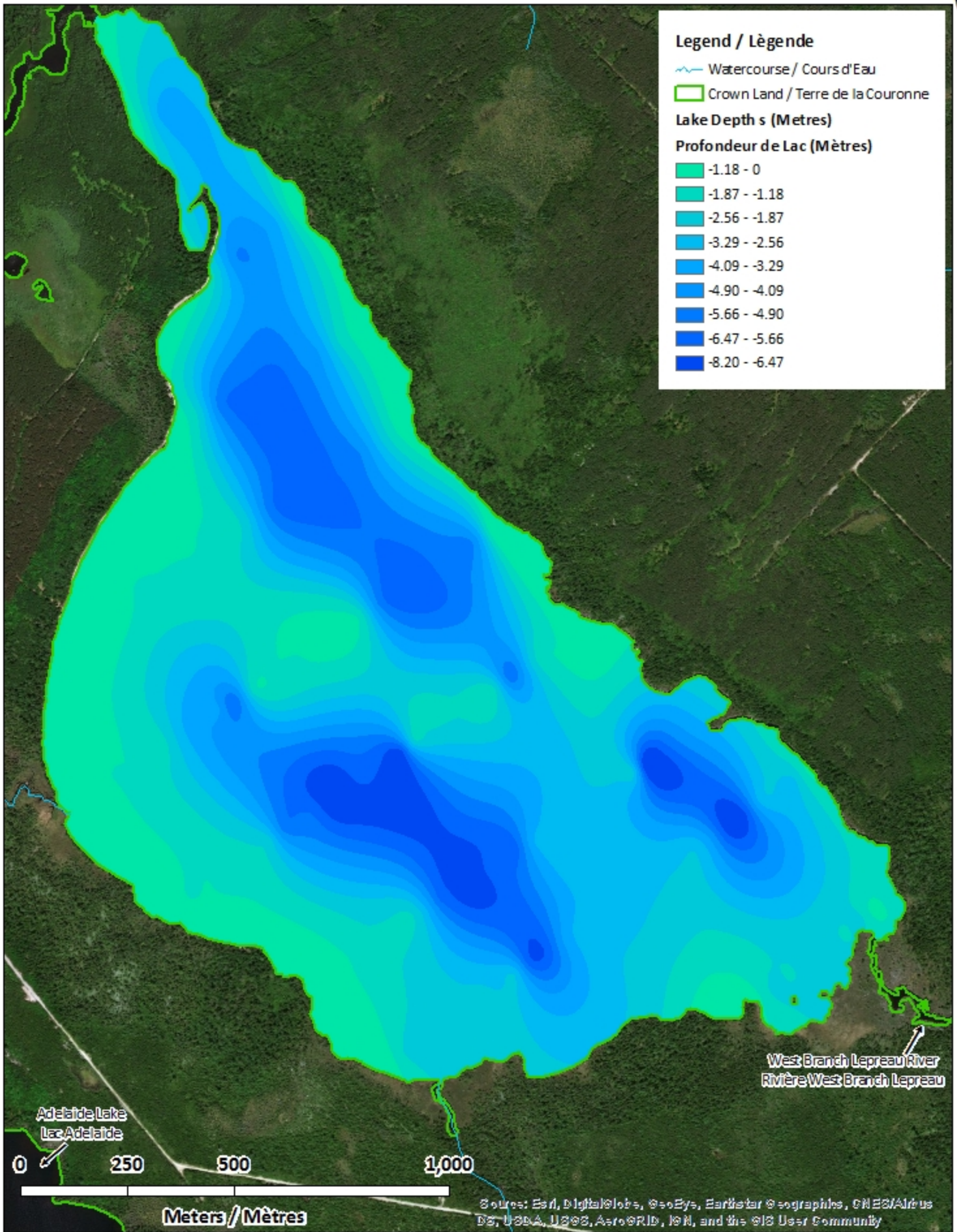
Legend / Légende

-  Watercourse / Cours d'Eau
-  Crown Land / Terre de la Couronne

Lake Depths (Metres)

Profondeur de Lac (Mètres)

-  -1.18 - 0
-  -1.87 - -1.18
-  -2.56 - -1.87
-  -3.29 - -2.56
-  -4.09 - -3.29
-  -4.90 - -4.09
-  -5.66 - -4.90
-  -6.47 - -5.66
-  -8.20 - -6.47



West Branch Lepreau River
Rivière West Branch Lepreau

Adelaide Lake
Lac Adelaide

0 250 500 1,000

Meters / Mètres

Sources: Esri, DigitalGlobe, GeoEye, Earthstar Geographics, CNES/Airbus DS, USDA, USGS, AeroGRID, IGN, and the GIS User Community

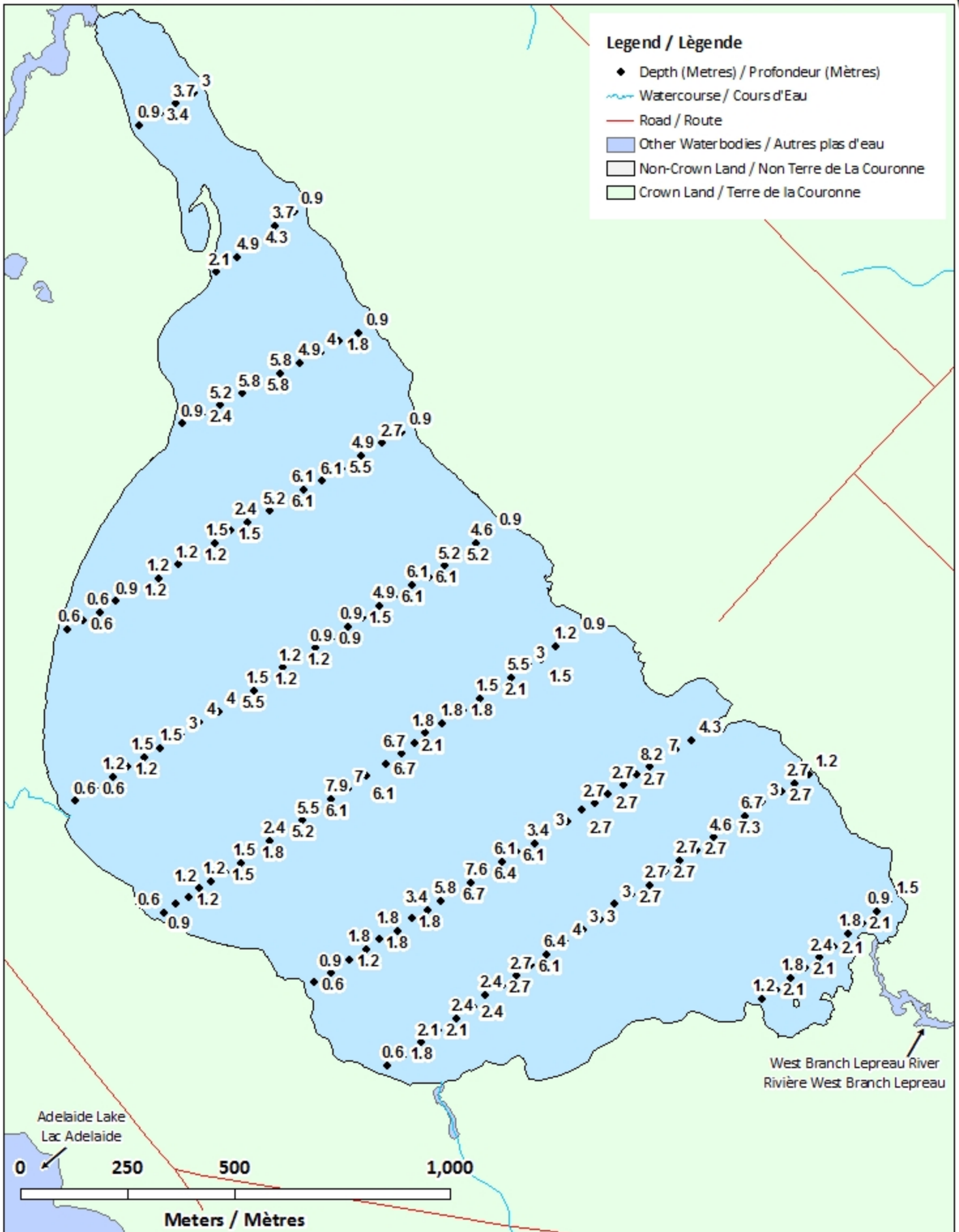
Victoria Lake / Lac Victoria

Depth Readings (Metres) / Indications de Profondeur (Mètres)



Legend / Légende

- ◆ Depth (Metres) / Profondeur (Mètres)
- ~ Watercourse / Cours d'Eau
- Road / Route
- Other Waterbodies / Autres plans d'eau
- Non-Crown Land / Non Terre de La Couronne
- Crown Land / Terre de la Couronne

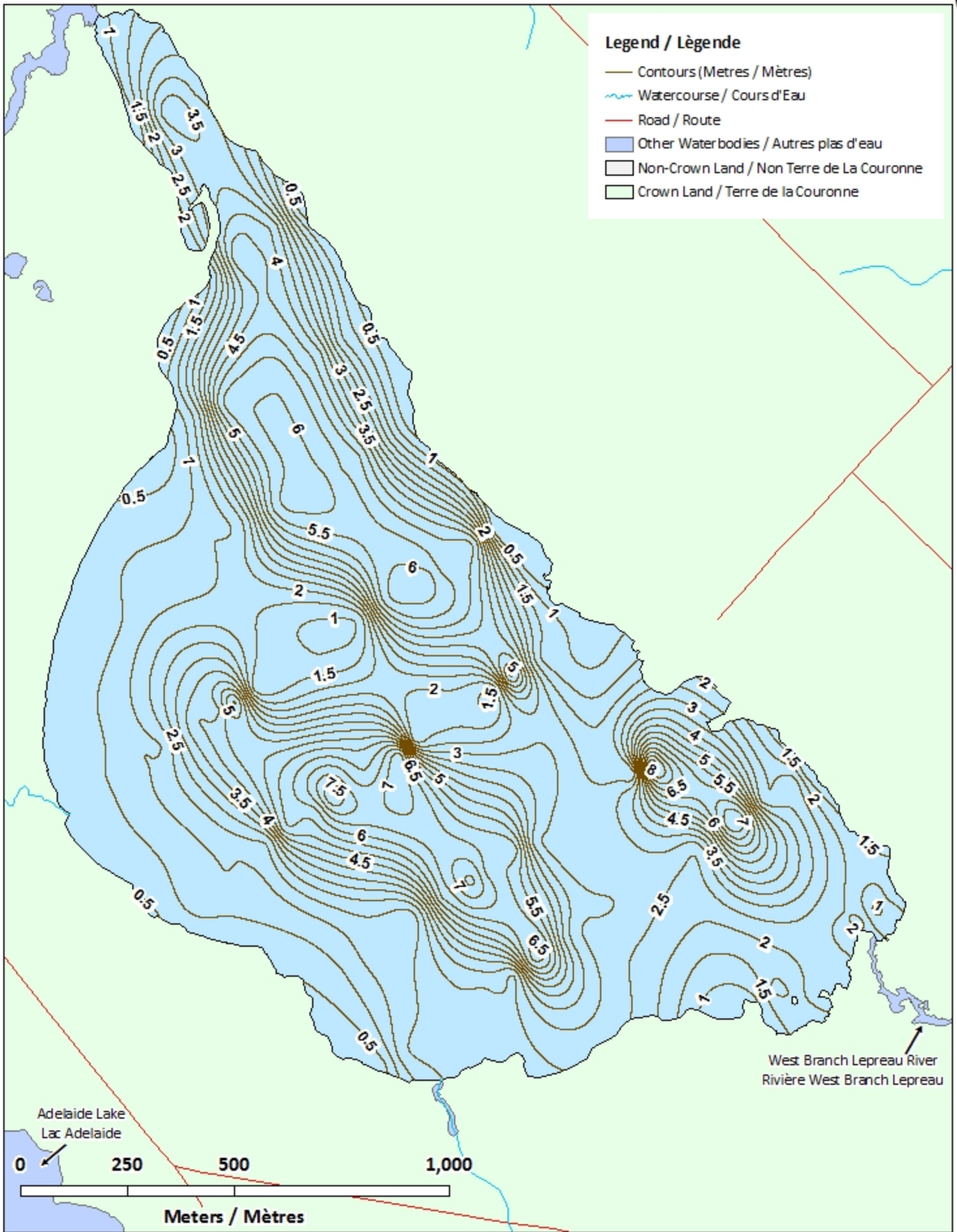


Victoria Lake / Lac Victoria Contours (Metres / Mètres)



Legend / Légende

- Contours (Metres / Mètres)
- ~ Watercourse / Cours d'Eau
- Road / Route
- Other Waterbodies / Autres plans d'eau
- Non-Crown Land / Non Terre de la Couronne
- Crown Land / Terre de la Couronne



West Branch Lepreau River
Rivière West Branch Lepreau

Adelaide Lake
Lac Adelaide

0 250 500 1,000

Meters / Mètres

Victoria Lake / Lac Victoria

Depth (Metres) / Profondeur (Mètres)

