

Upsalquitch Lake / Lac Upsalquitch

Northumberland County / Comté de Northumberland

*Restigouche Recreational Fishing Area /
Zone de Pêche Récréative de Restigouche*

47°28'38.8"N 66°29'58.6"W

Upsalquitch Lake / Lac Upsalquitch

Note: *The following maps are not designed for navigation purposes. Please exercise caution when using these maps as some shoals may not appear.*

Remarque: *Les cartes suivantes ne sont pas conçues à des fins de navigation. Faites preuve de prudence lors de l'utilisation de ces cartes, car certains hauts-fonds peuvent ne pas apparaître.*

<u>Lake Characteristics</u>	<u>Caractéristiques du lac</u>
Surface Area : 69.1 hectares / 170.7 acres Maximum Depth : 15.2 metres / 50 feet	Superficie : 69.1 hectares / 170.7 acres Profondeur maximale : 15.2 mètres / 50 pieds

<u>Species Present</u>	<u>Espèce Présente</u>
Sport Fish Brook Trout	Poisson sportif Truite mouchetée (Ombles de fontaine)
Non-Sport Fish Banded Killifish Blacknose Dace Common Shiner Fallfish Golden Shiner Lake Chub Threespine Stickleback	Poisson non sportif Fondule barré Naseux noir Méné à nageoires rouges Ouitouche Méné jaune Méné de lac Épinoche à trois épines

This lake is not part of the fish stocking program.

Ce lac ne fait pas partie du programme d'empoissonnement.

Upsalquitch Lake / Lac Upsalquitch

Depth Readings (Metres) / Indications de Profondeur (Mètres)

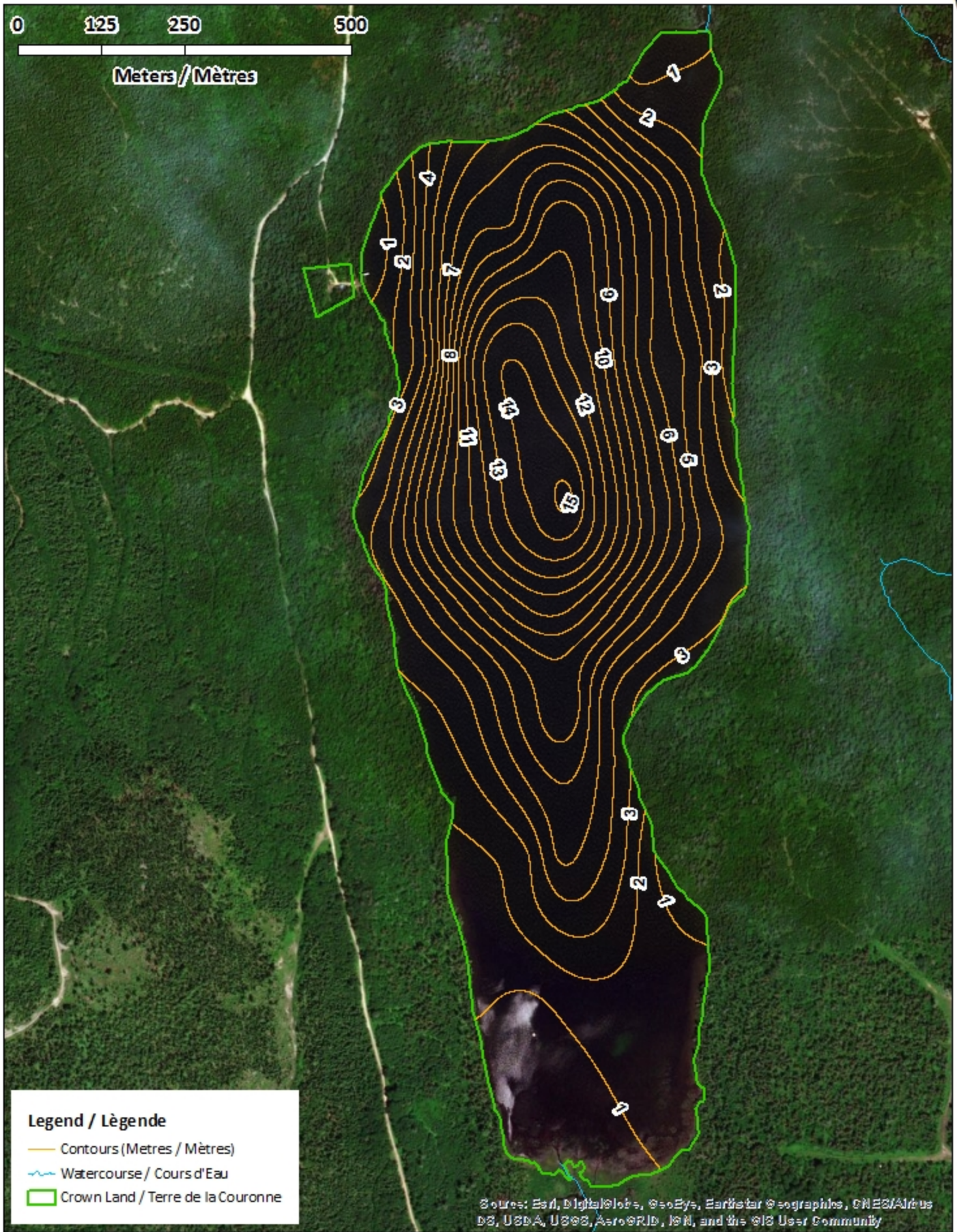
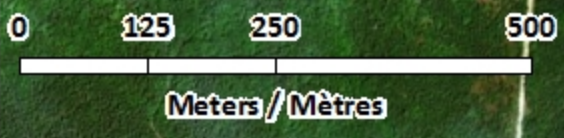


Legend / Légende

- ◆ Depth (Metres) / Profondeur (Mètres)
- ~ Watercourse / Cours d'Eau
- Crown Land / Terre de la Couronne

Source: Esri, DigitalGlobe, GeoEye, Earthstar © geographics, CNES/Airbus DS, USDA, USGS, AeroGRID, IGN, and the GIS User Community

Upsalquitch Lake / Lac Upsalquitch Contours (Metres / Mètres)



Legend / Légende

- Contours (Metres / Mètres)
- ~ Watercourse / Cours d'Eau
- Crown Land / Terre de la Couronne

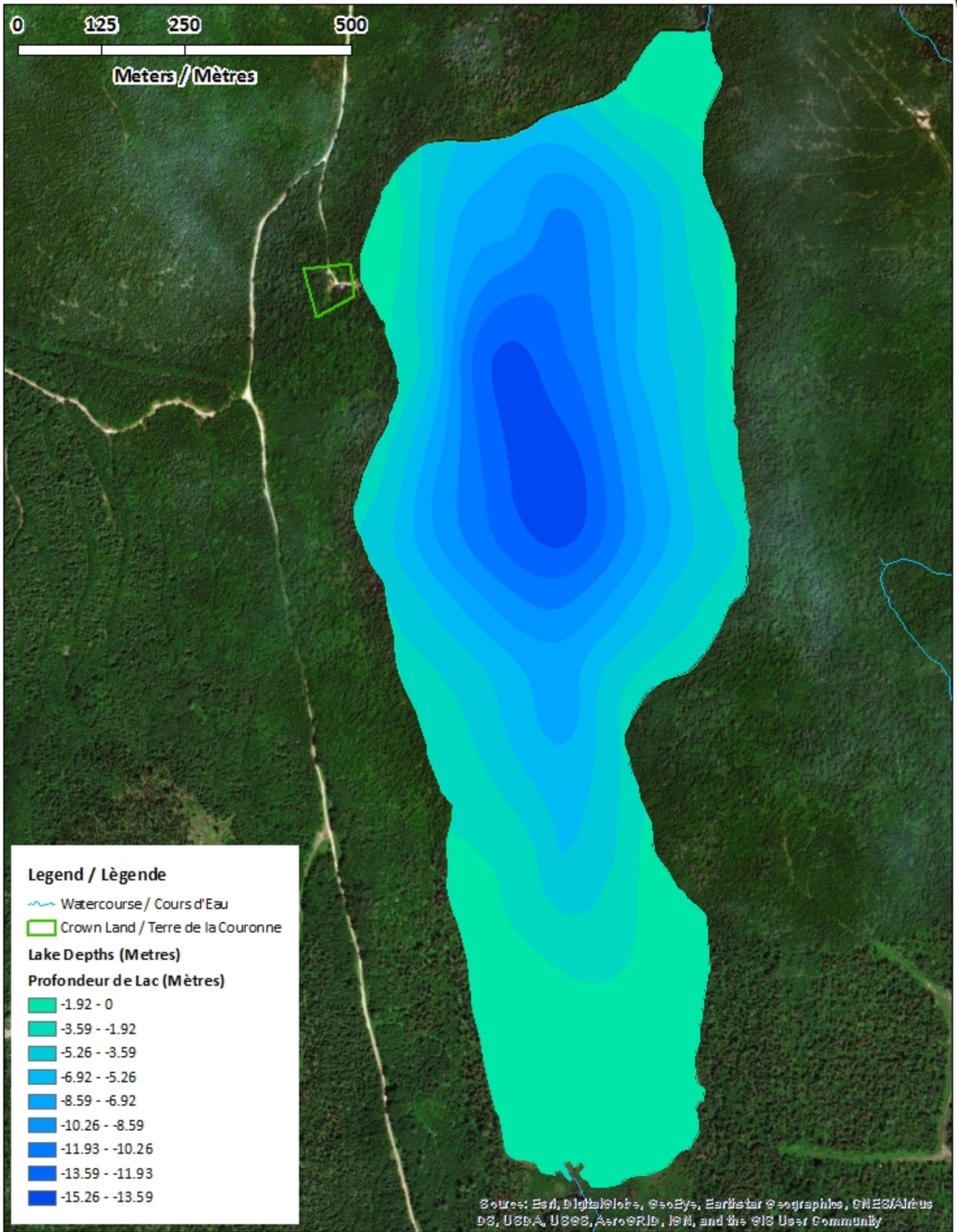
Source: Esri, DigitalGlobe, GeoEye, Earthstar Geographics, CNES/Airbus DS, USDA, USGS, AeroGRID, IGN, and the GIS User Community

Upsalquitch Lake / Lac Upsalquitch


Depth (Metres) / Profondeur (Mètres)




0 125 250 500
Meters / Mètres



Legend / Légende


 Watercourse / Cours d'Eau


 Crown Land / Terre de la Couronne


Lake Depths (Metres)


Profondeur de Lac (Mètres)

 -1.92 - 0


 -3.59 - -1.92


 -5.26 - -3.59


 -6.92 - -5.26

 -8.59 - -6.92

 -10.26 - -8.59

 -11.93 - -10.26

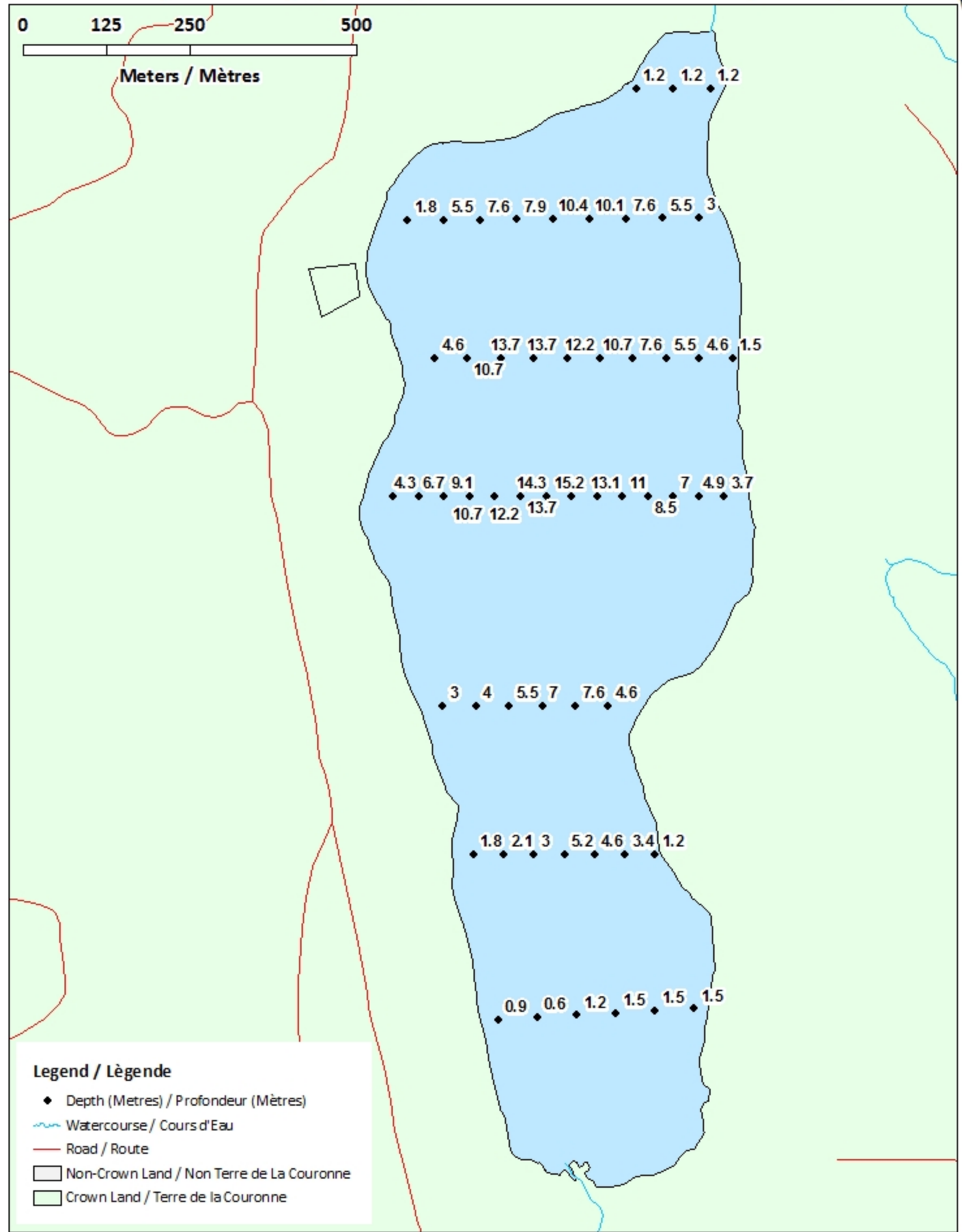
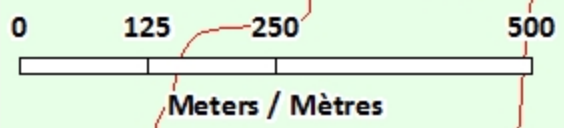
 -13.59 - -11.93

 -15.26 - -13.59

Source: Esri, DigitalGlobe, GeoEye, Earthstar Geographics, CNES/Airbus DS, USDA, USGS, AeroGRID, IGN, and the GIS User Community

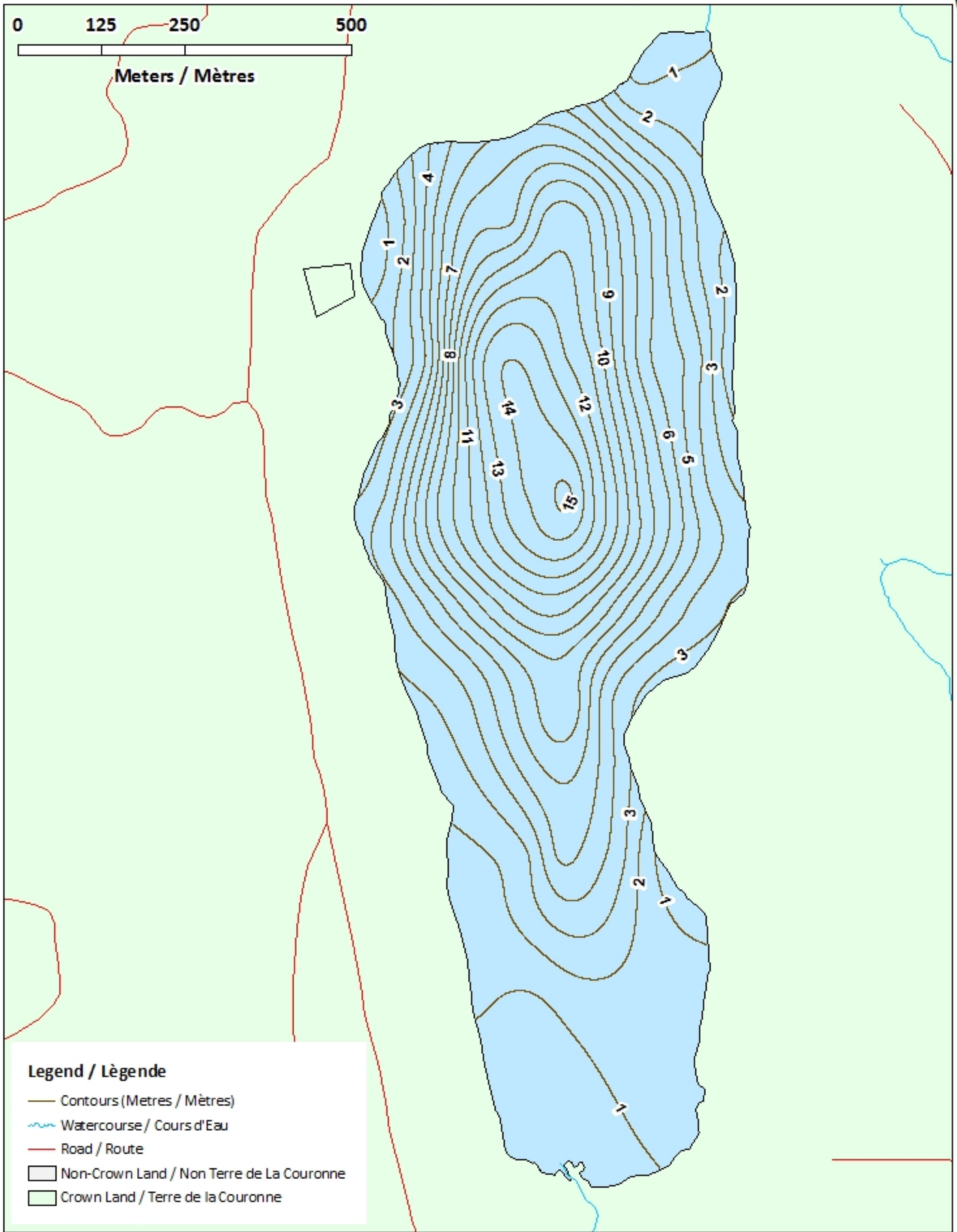
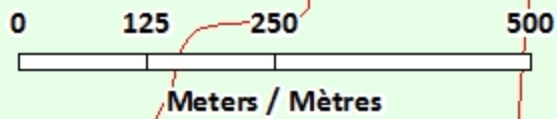
Upsalquitch Lake / Lac Upsalquitch

Depth Readings (Metres) / Indications de Profondeur (Mètres)



Upsalquitch Lake / Lac Upsalquitch

Contours (Metres / Mètres)

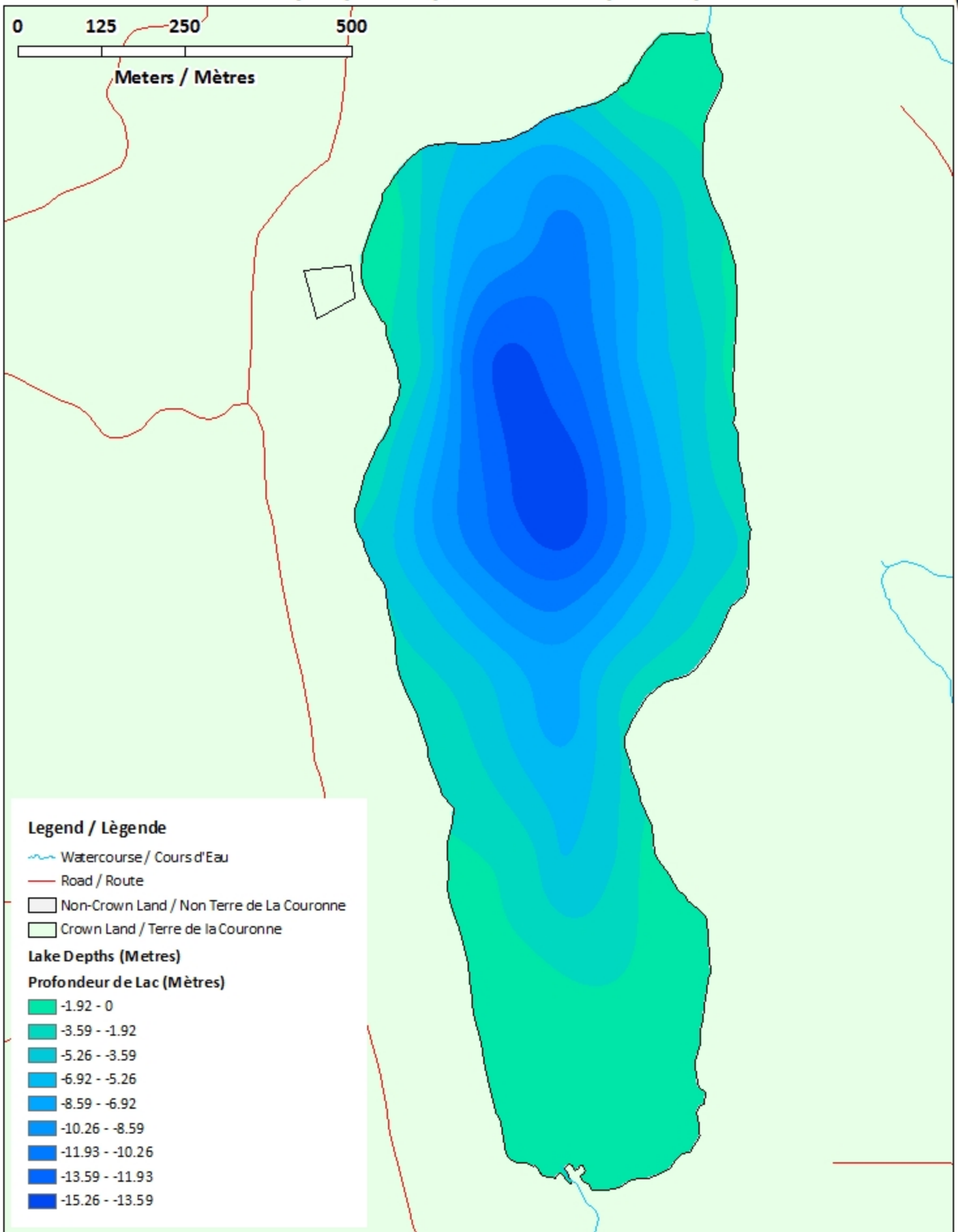
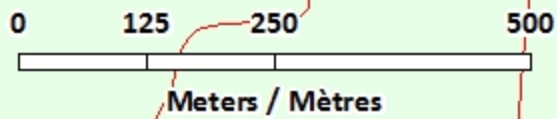


Legend / Légende

- Contours (Metres / Mètres)
- ~ Watercourse / Cours d'Eau
- Road / Route
- Non-Crown Land / Non Terre de La Couronne
- Crown Land / Terre de la Couronne

Upsalquitch Lake / Lac Upsalquitch

Depth (Metres) / Profondeur (Mètres)



Legend / Légende

Watercourse / Cours d'Eau

Road / Route

Non-Crown Land / Non Terre de La Couronne

Crown Land / Terre de la Couronne

Lake Depths (Metres)

Profondeur de Lac (Mètres)

-1.92 - 0

-3.59 - -1.92

-5.26 - -3.59

-6.92 - -5.26

-8.59 - -6.92

-10.26 - -8.59

-11.93 - -10.26

-13.59 - -11.93

-15.26 - -13.59