

## South Little River Lake /Lac South Little River

*Northumberland County / Comté de Northumberland*

*Miramichi Recreational Fishing Area /  
Zone de Pêche Récréative de Miramichi*

*47°15'02.9"N 66°08'34.1"W*

## South Little River Lake / Lac South Little River

**Note:** *The following maps are not designed for navigation purposes. Please exercise caution when using these maps as some shoals may not appear.*

**Remarque:** *Les cartes suivantes ne sont pas conçues à des fins de navigation. Faites preuve de prudence lors de l'utilisation de ces cartes, car certains hauts-fonds peuvent ne pas apparaître.*

<u>Lake Characteristics</u>	<u>Caractéristiques du lac</u>
Surface Area : 55.1 hectares / 136.2 acres Maximum Depth : 4.6 metres / 15 feet	Superficie : 55.1 hectares / 136.2 acres Profondeur maximale : 4.6 mètres / 15 pieds

<u>Species Present</u>	<u>Espèce Présente</u>
<b>Sport Fish</b> Brook Trout	<b>Poisson sportif</b> Truite mouchetée (Ombles de fontaine)
<b>Non-Sport Fish</b> White Sucker Yellow Perch	<b>Poisson non sportif</b> Meunier noir Perchaude

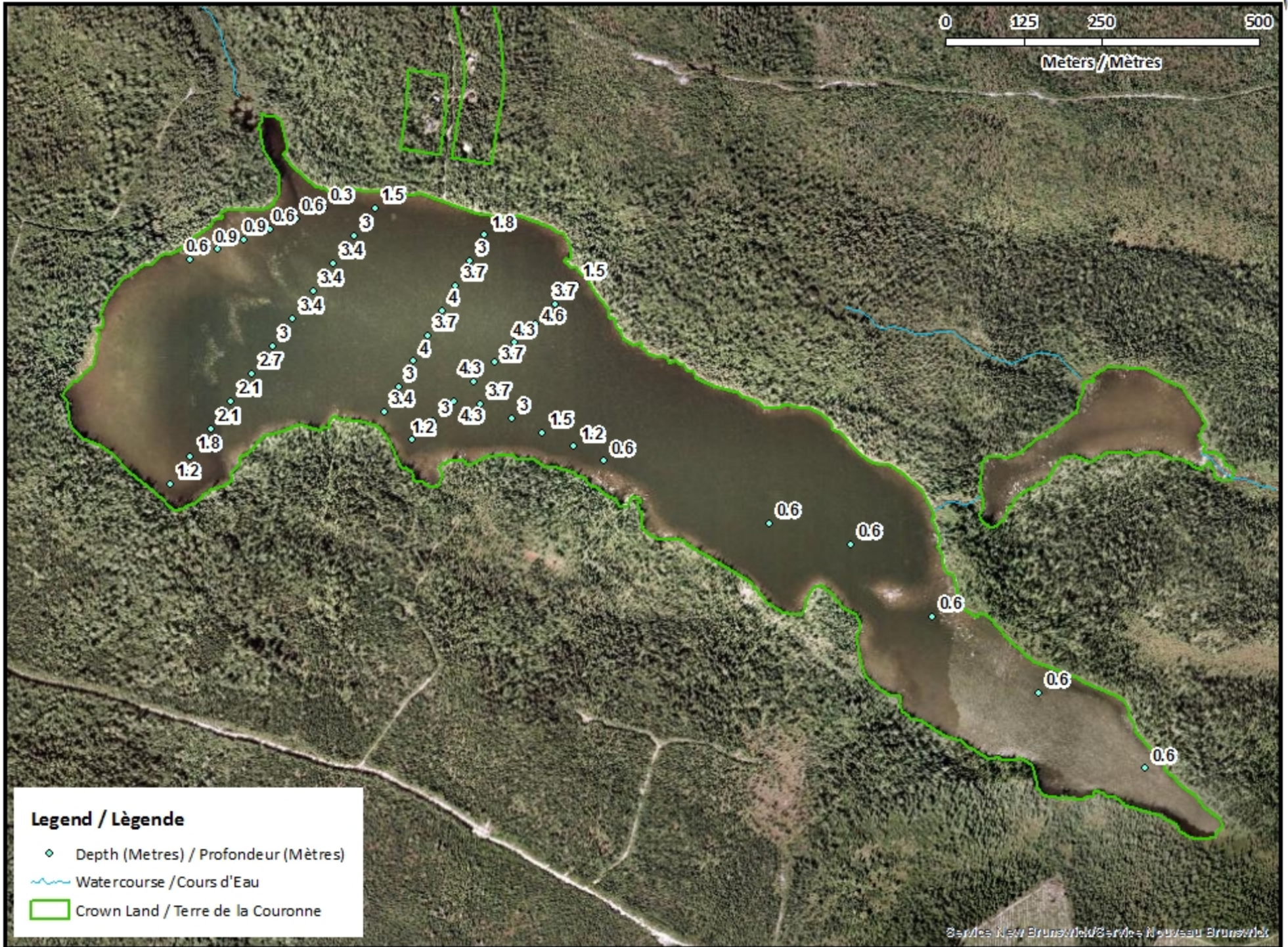
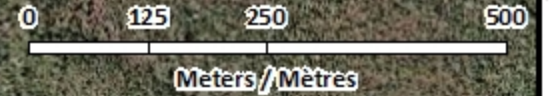
This lake is not part of the fish stocking program.

Ce lac ne fait pas partie du programme d'empoissonnement.



# South Little River Lake / Lac South Little River

## Depth Readings (Metres) / Indications de Profondeur (Mètres)



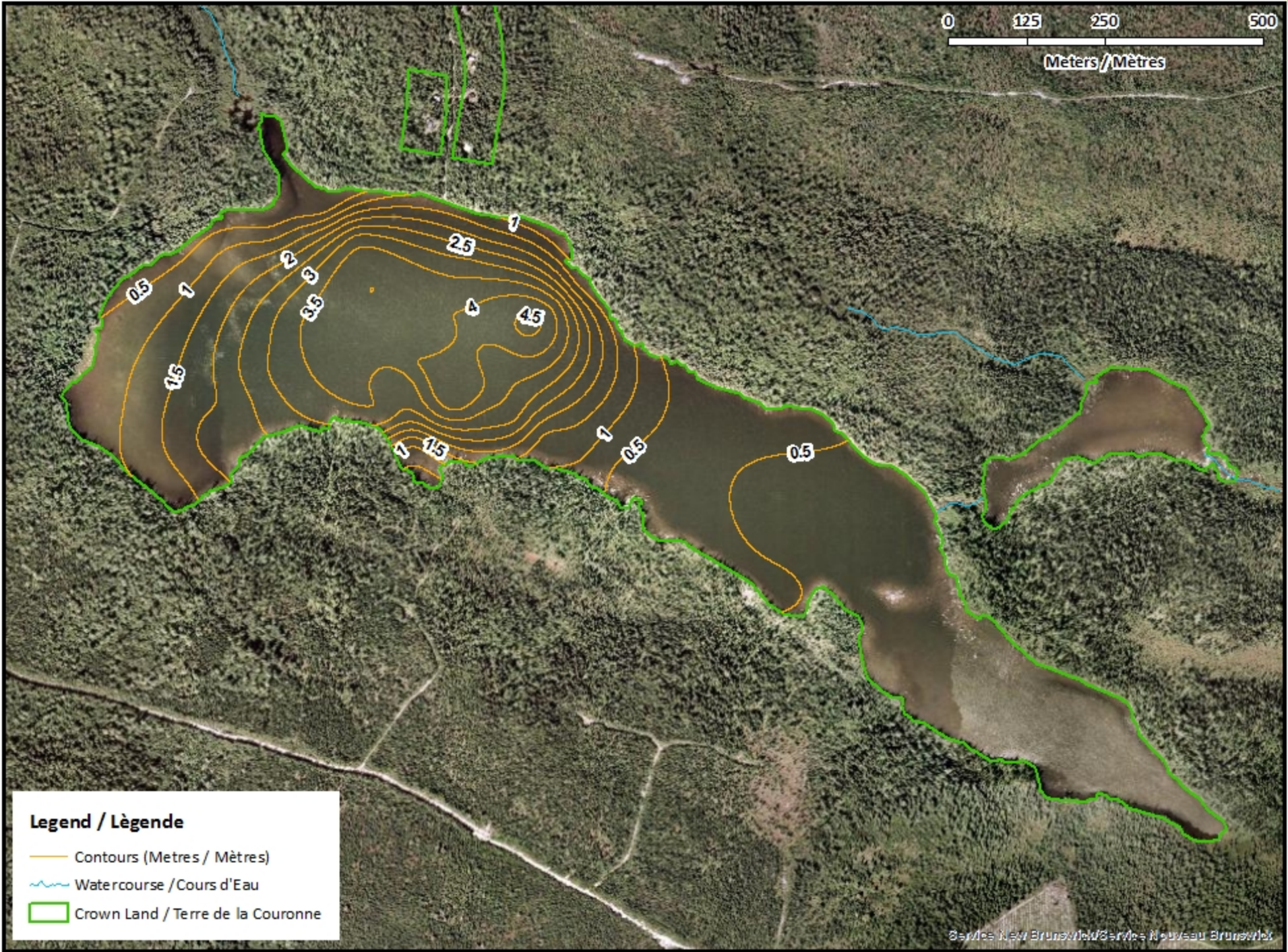
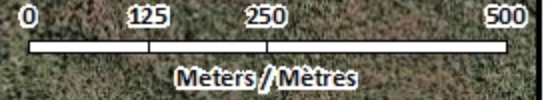
### Legend / Légende

- ◆ Depth (Metres) / Profondeur (Mètres)
- ~ Watercourse / Cours d'Eau
- Crown Land / Terre de la Couronne



# South Little River Lake / Lac South Little River

## Contours (Metres / Mètres)



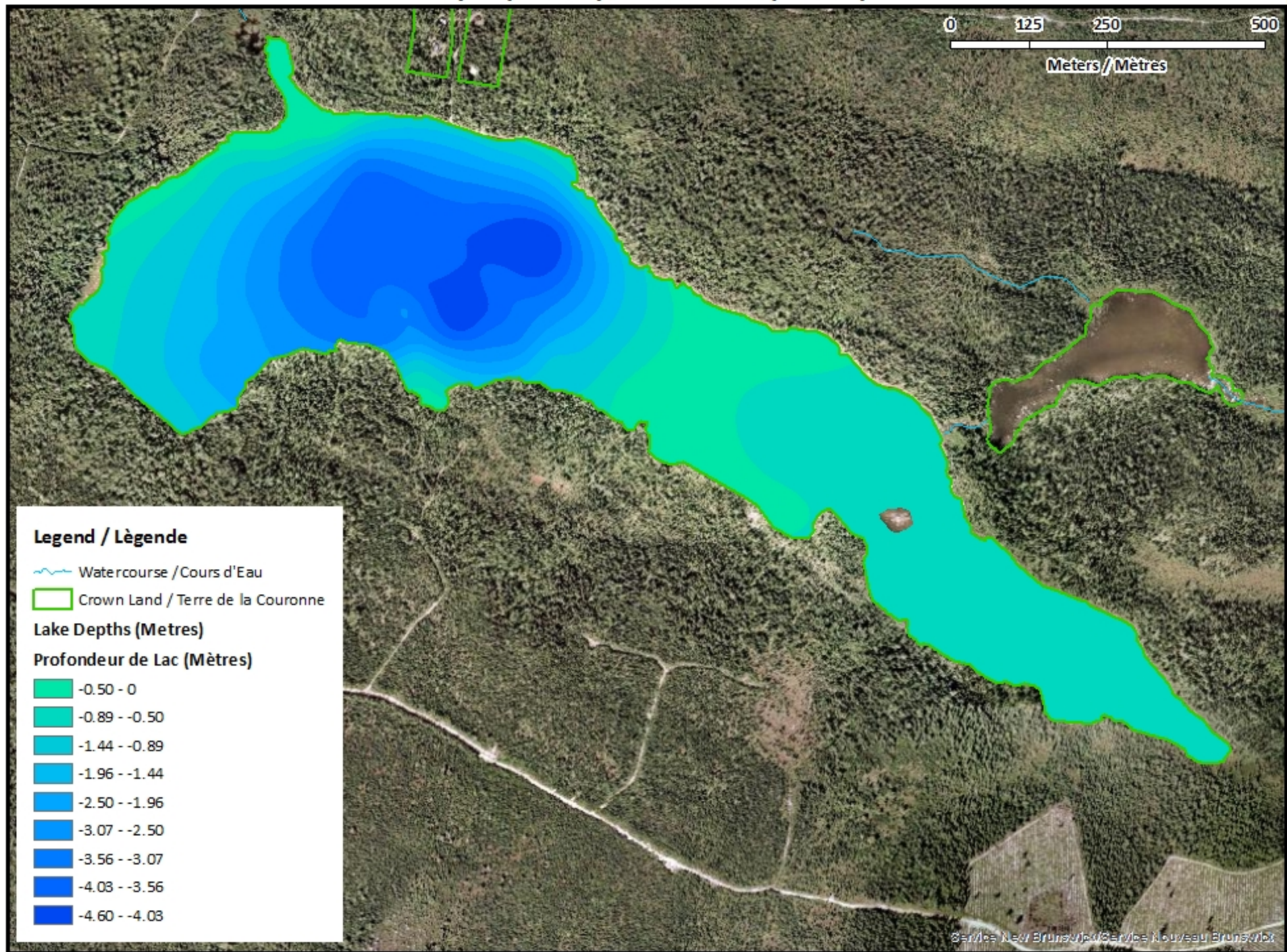
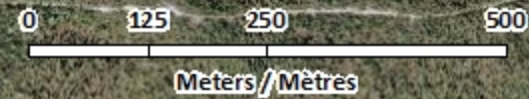
**Legend / Légende**

- Contours (Metres / Mètres)
- ~ Watercourse / Cours d'Eau
- Crown Land / Terre de la Couronne





# South Little River Lake / Lac South Little River

## Depth (Metres) / Profondeur (Mètres)












### Legend / Légende

-  Watercourse / Cours d'Eau
-  Crown Land / Terre de la Couronne

### Lake Depths (Metres)

### Profondeur de Lac (Mètres)

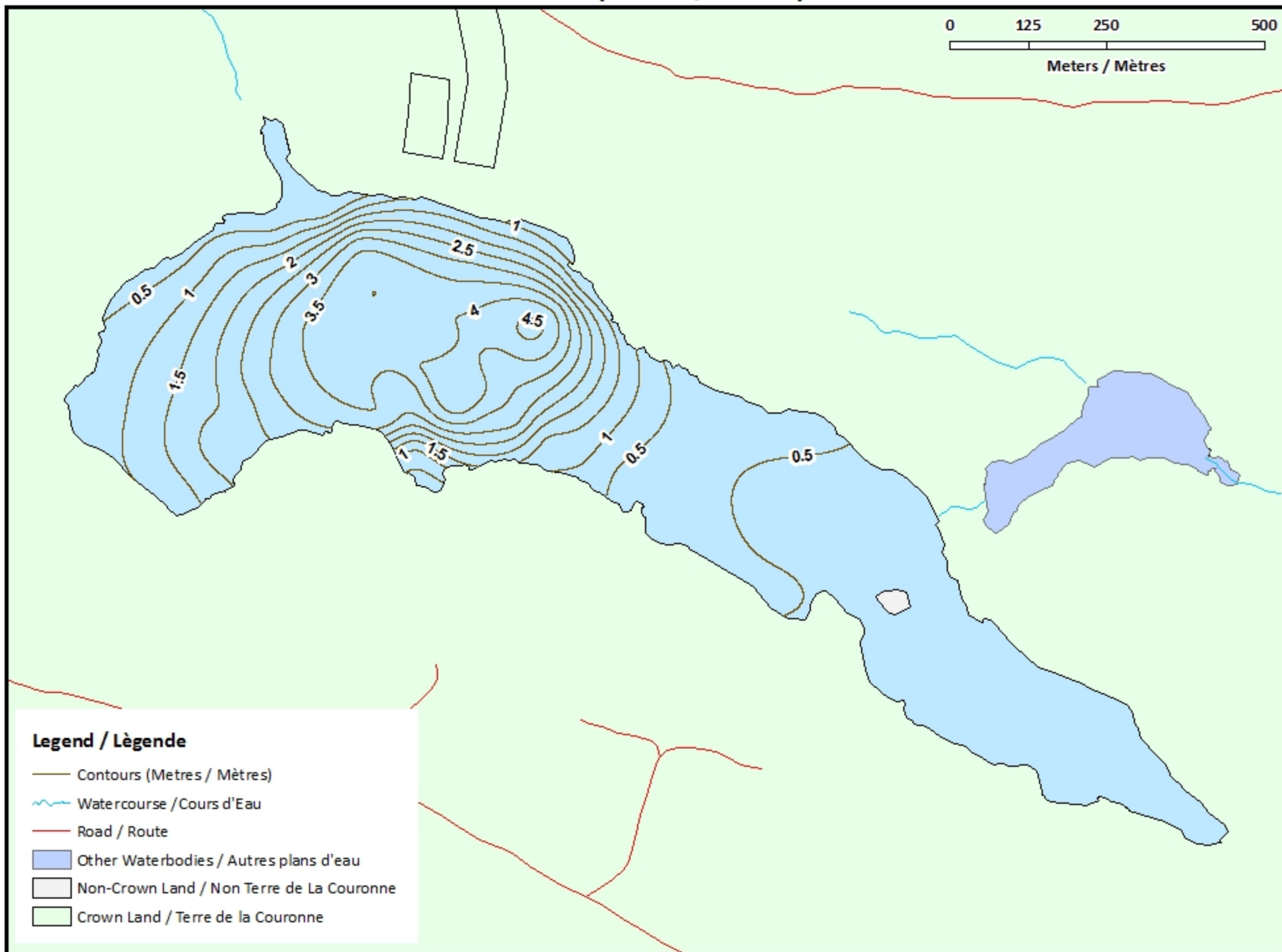
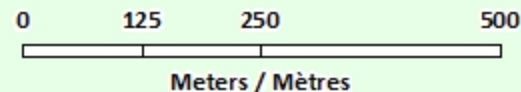
-  -0.50 - 0
-  -0.89 - -0.50
-  -1.44 - -0.89
-  -1.96 - -1.44
-  -2.50 - -1.96
-  -3.07 - -2.50
-  -3.56 - -3.07
-  -4.03 - -3.56
-  -4.60 - -4.03





# South Little River Lake / Lac South Little River

## Contours (Metres / Mètres)

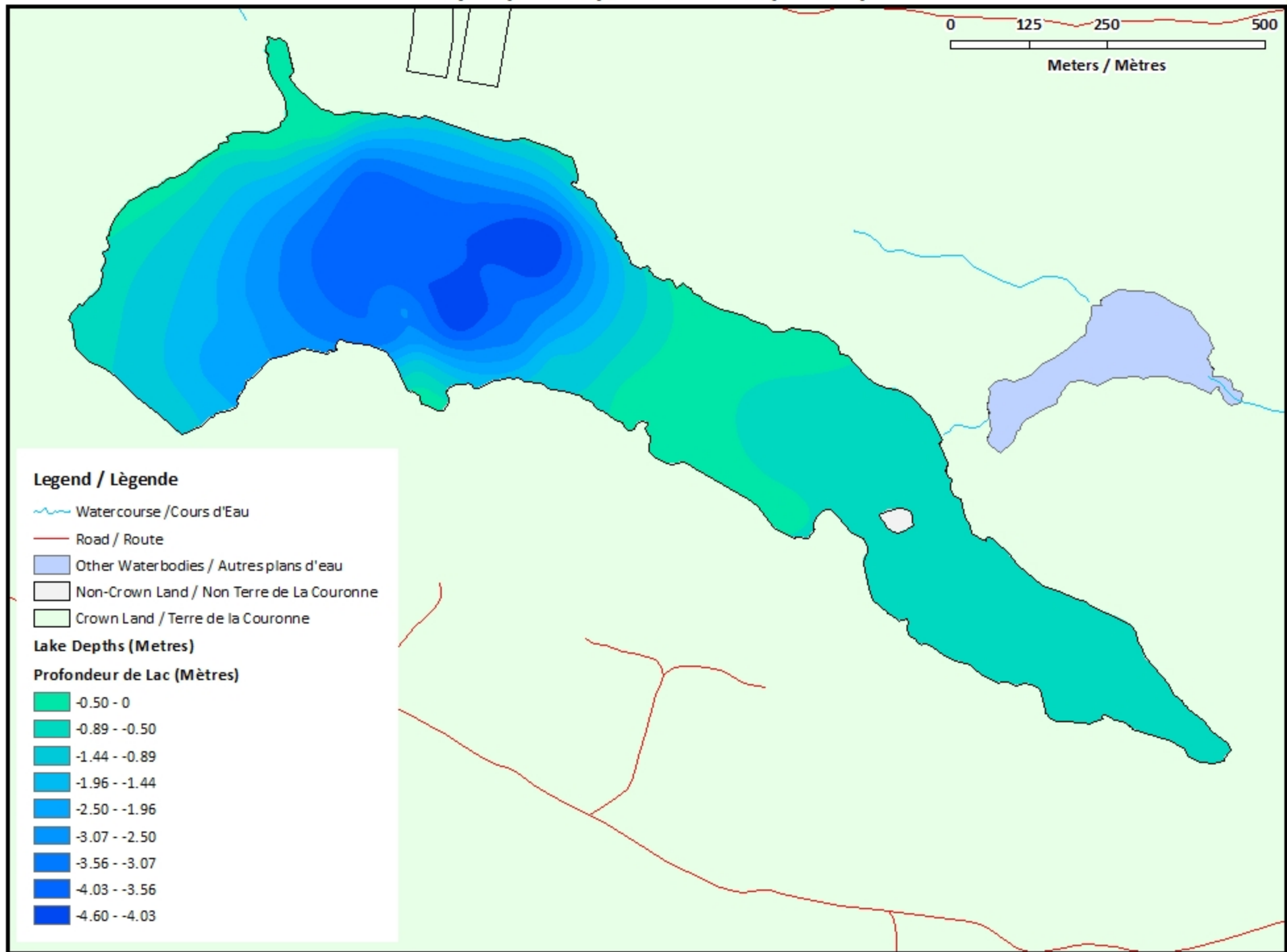
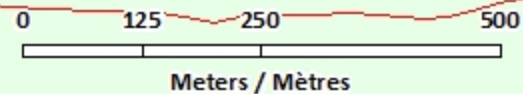


### Legend / Légende

- Contours (Metres / Mètres)
- ~ Watercourse / Cours d'Eau
- Road / Route
- Other Waterbodies / Autres plans d'eau
- Non-Crown Land / Non Terre de La Couronne
- Crown Land / Terre de la Couronne

# South Little River Lake / Lac South Little River

## Depth (Metres) / Profondeur (Mètres)



### Legend / Légende

- Watercourse / Cours d'Eau
- Road / Route
- Other Waterbodies / Autres plans d'eau
- Non-Crown Land / Non Terre de La Couronne
- Crown Land / Terre de la Couronne

### Lake Depths (Metres)

#### Profondeur de Lac (Mètres)

- 0.50 - 0
- 0.89 - -0.50
- 1.44 - -0.89
- 1.96 - -1.44
- 2.50 - -1.96
- 3.07 - -2.50
- 3.56 - -3.07
- 4.03 - -3.56
- 4.60 - -4.03