

Second Eel Lake / Lac Second Eel

York County / Comté de York

*Lower Saint John Recreational Fishing Area /
Zone de Pêche Récréative de Bas Saint-Jean*

45°48'23.4"N 67°38'26.1"W

Second Eel Lake / Lac Second Eel

Note: *The following maps are not designed for navigation purposes. Please exercise caution when using these maps as some shoals may not appear.*

Remarque: *Les cartes suivantes ne sont pas conçues à des fins de navigation. Faites preuve de prudence lors de l'utilisation de ces cartes, car certains hauts-fonds peuvent ne pas apparaître.*

<u>Lake Characteristics</u>	<u>Caractéristiques du lac</u>
Surface Area : 583.2 hectares / 1441.1 acres Maximum Depth : 7.9 metres / 26 feet	Superficie : 583.2 hectares / 1441.1 acres Profondeur maximale: 7.9 mètres / 26 pieds

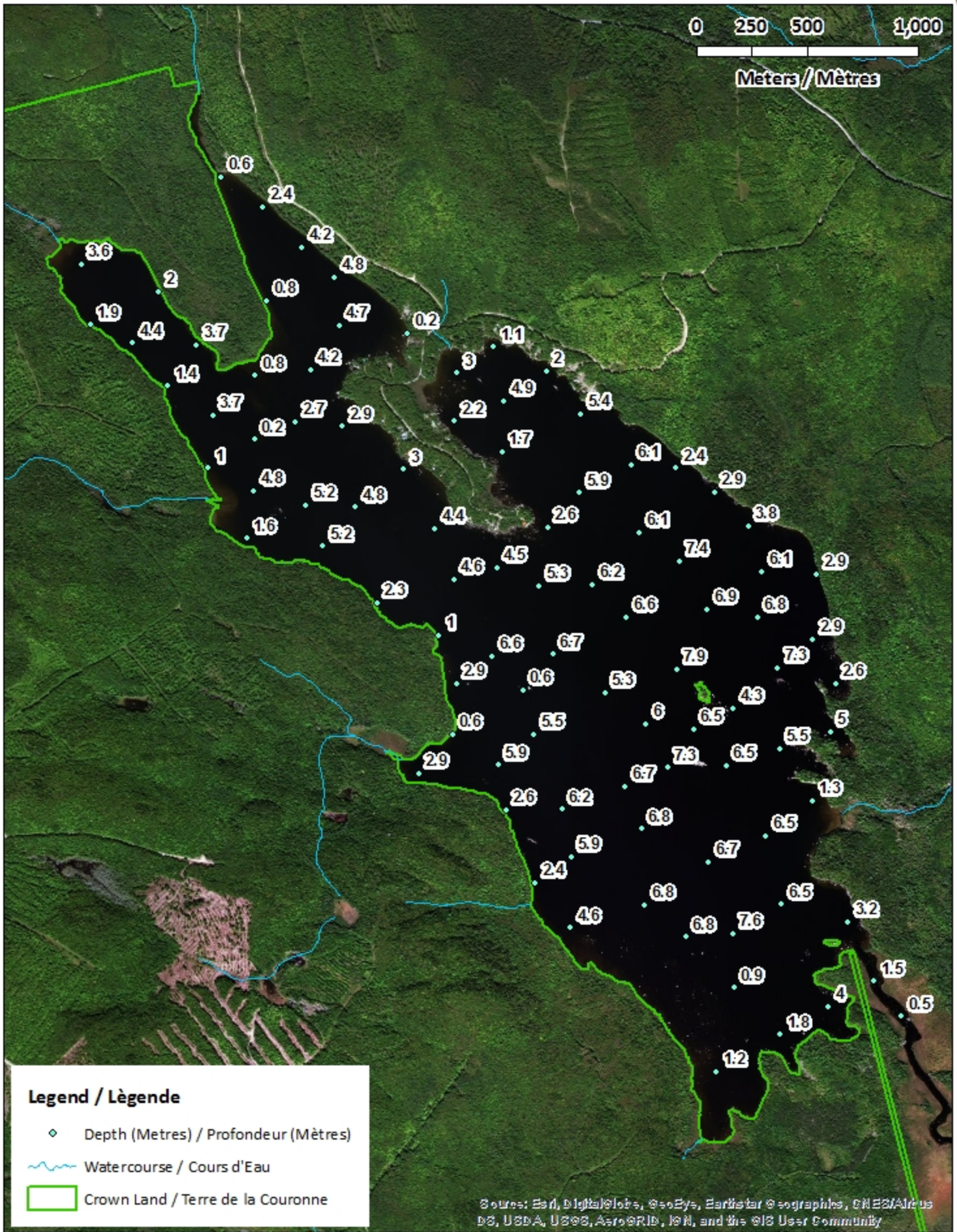
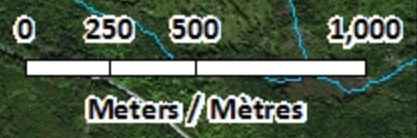
<u>Species Present</u>	<u>Espèce Présente</u>
Sport Fish Brook Trout Landlocked Salmon Smallmouth Bass	Poisson sportif Truite mouchetée (Omble de fontaine) Ouananiche Achigan à petite bouche
Non-Sport Fish American Eel Banded Killifish Brown Bullhead Creek Chub Fallfish Golden Shiner Pumpkinseed Rainbow Smelt White Perch White Sucker Yellow Perch	Poisson non sportif Anguille d'Amérique Fondule barré Barbotte brune Mulet à cornes Ouitouche Méné jaune Crapet-soleil Éperlan arc-en-ciel Baret Meunier noir Perchaude

This lake is currently part of the fish stocking program (Landlocked Salmon).

Ce lac fait actuellement partie du programme d'empoissonnement (Ouananiche)

Second Eel Lake / Lac Second Eel

Depth Readings (Metres) / Indications de Profondeur (Mètres)



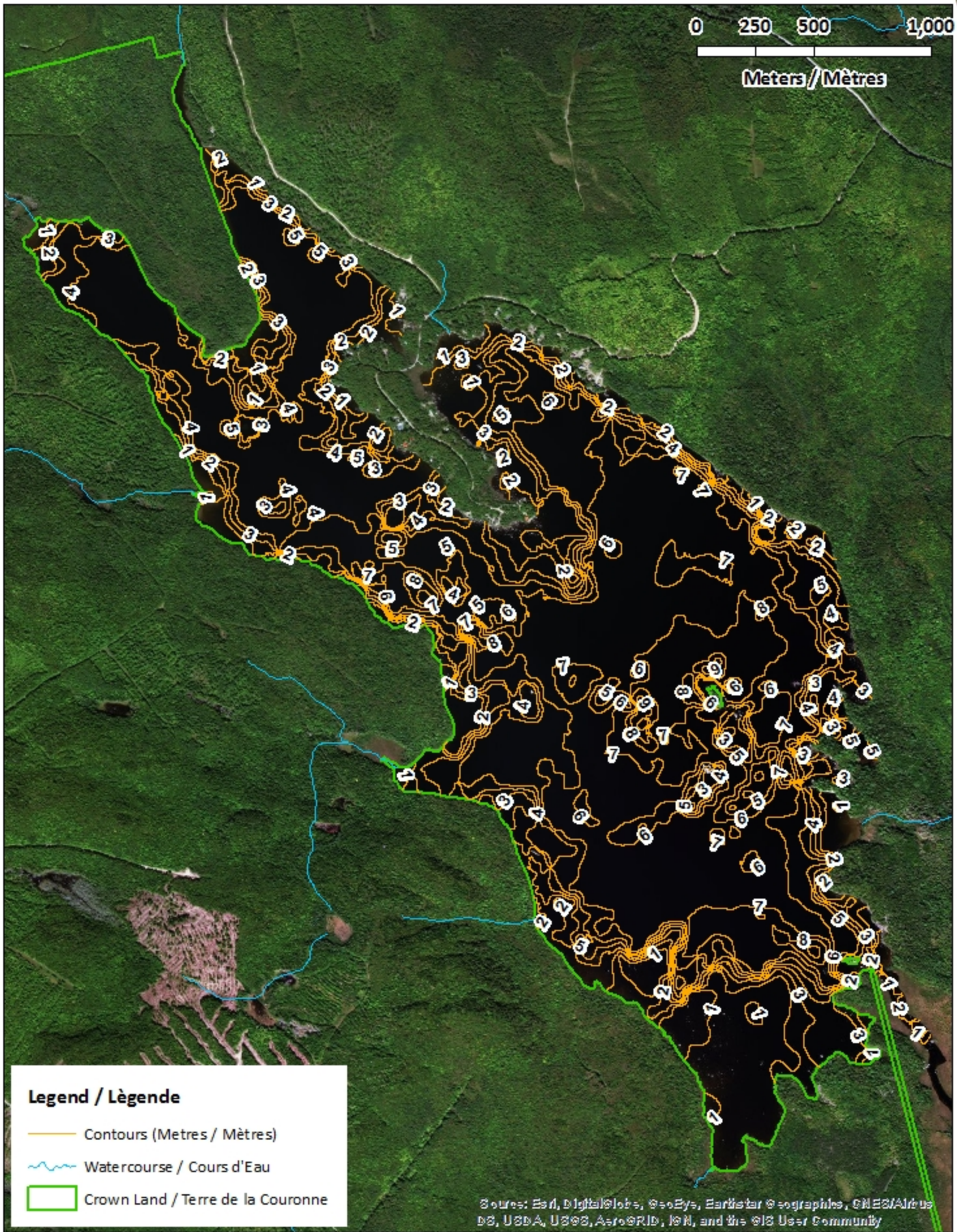
Legend / Légende

- ◆ Depth (Metres) / Profondeur (Mètres)
- ~ Watercourse / Cours d'Eau
- Crown Land / Terre de la Couronne


Sources: Esri, DigitalGlobe, GeoEye, Earthstar © geographics, CNES/Airbus DS, USDA, USGS, AeroGRID, IGN, and the GIS User Community

Second Eel Lake / Lac Second Eel

Contours (Metres / Mètres)



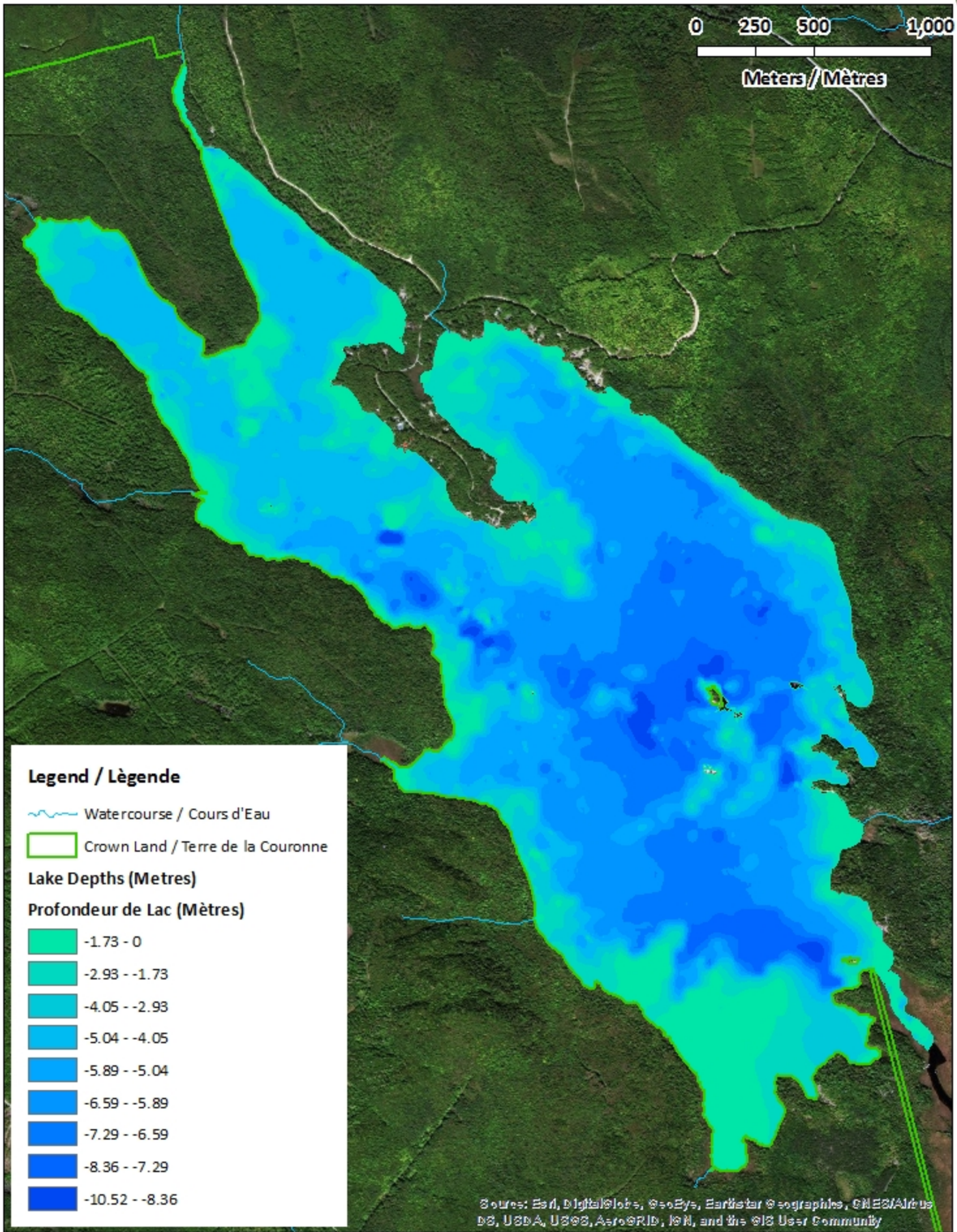
Legend / Légende

-  Contours (Metres / Mètres)
-  Watercourse / Cours d'Eau
-  Crown Land / Terre de la Couronne



Source: Esri, DigitalGlobe, GeoEye, Earthstar Geographics, CNES/Airbus DS, USDA, USGS, AeroGRID, IGN, and the GIS User Community

Second Eel Lake / Lac Second Eel

Depth (Metres) / Profondeur (Mètres)



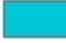








Legend / Légende

-  Watercourse / Cours d'Eau
-  Crown Land / Terre de la Couronne

Lake Depths (Metres)

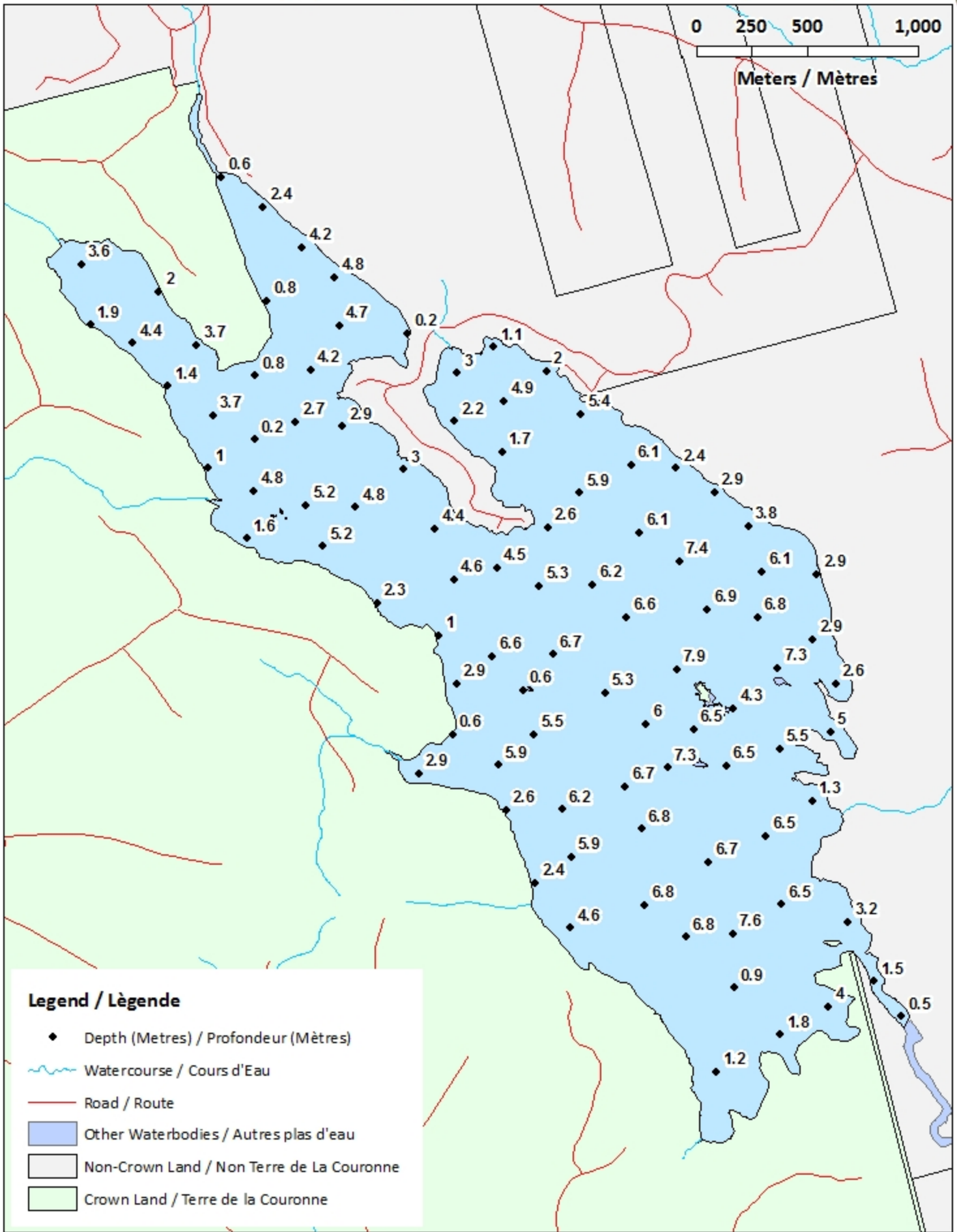
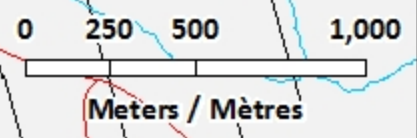
Profondeur de Lac (Mètres)

-  -1.73 - 0
-  -2.93 - -1.73
-  -4.05 - -2.93
-  -5.04 - -4.05
-  -5.89 - -5.04
-  -6.59 - -5.89
-  -7.29 - -6.59
-  -8.36 - -7.29
-  -10.52 - -8.36

Sources: Esri, DigitalGlobe, GeoEye, Earthstar Geographics, CNES/Airbus DS, USDA, USGS, AeroGRID, IGN, and the GIS User Community

Second Eel Lake / Lac Second Eel

Depth Readings (Metres) / Indications de Profondeur (Mètres)

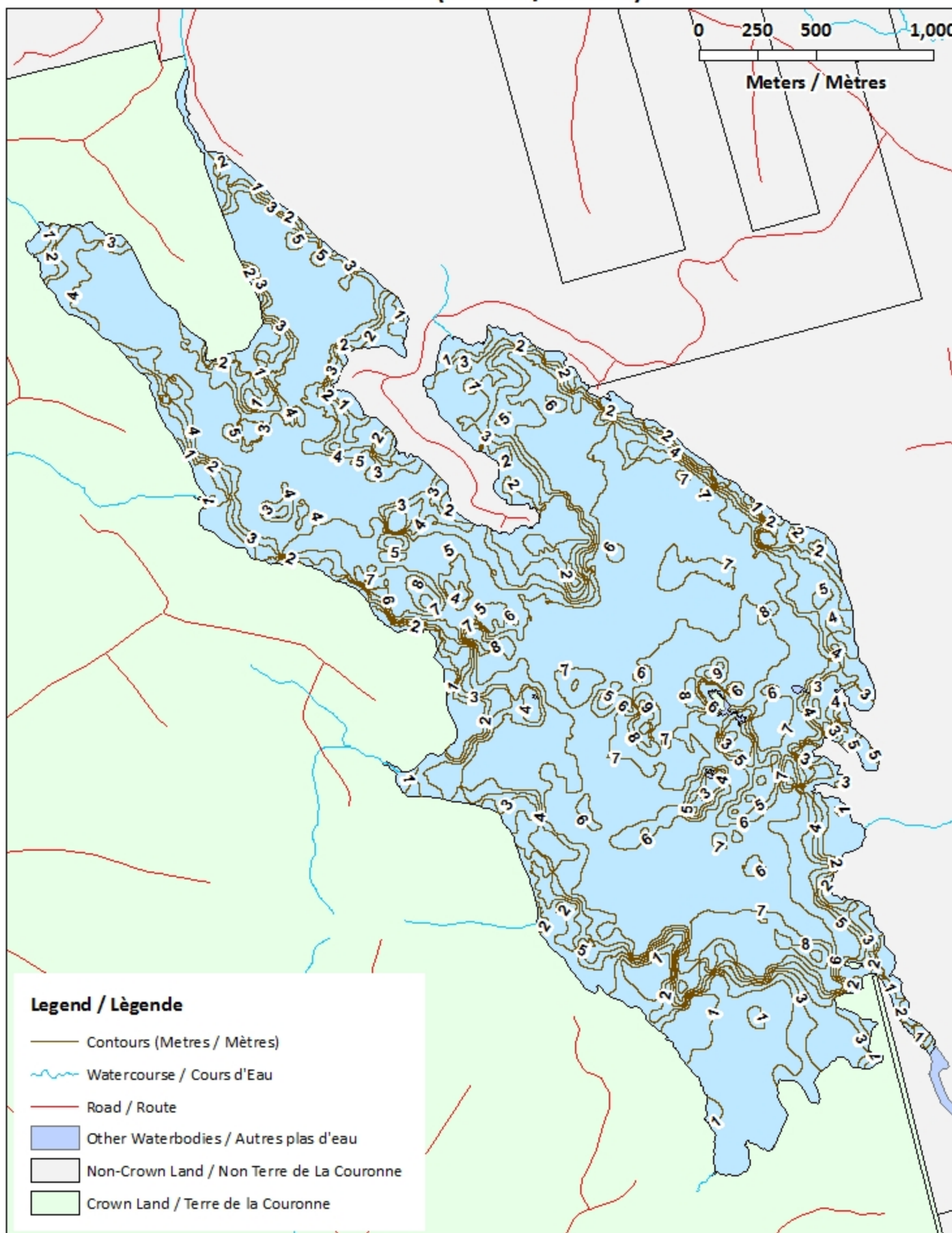


Second Eel Lake / Lac Second Eel

Contours (Metres / Mètres)



0 250 500 1,000
Meters / Mètres

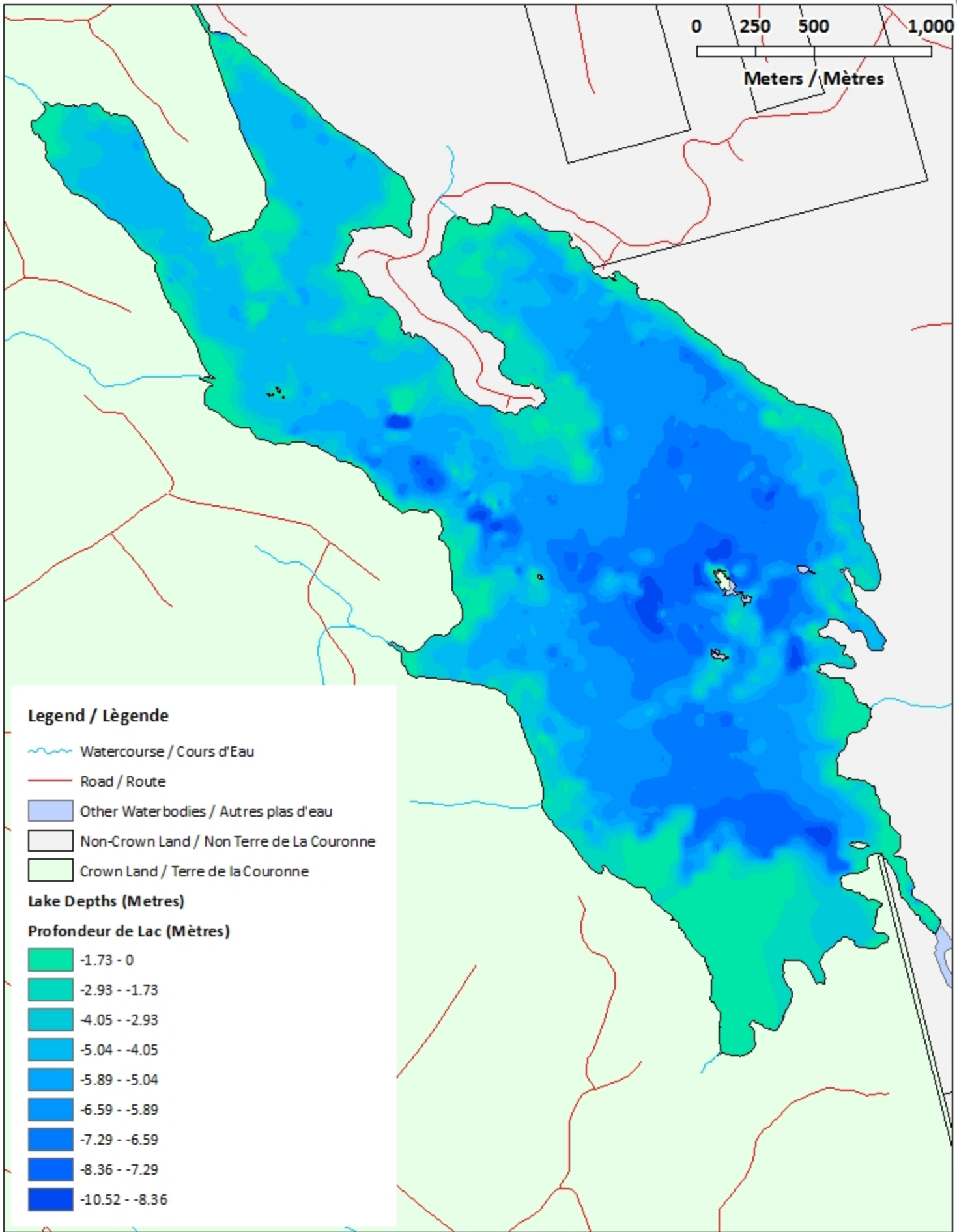
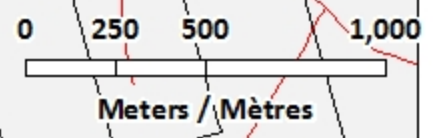


Legend / Légende




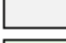

- Contours (Metres / Mètres)
- ~ Watercourse / Cours d'Eau
- Road / Route
- Other Waterbodies / Autres plas d'eau
- Non-Crown Land / Non Terre de La Couronne
- Crown Land / Terre de la Couronne

Second Eel Lake / Lac Second Eel

Depth (Metres) / Profondeur (Mètres)












Legend / Légende

-  Watercourse / Cours d'Eau
-  Road / Route
-  Other Waterbodies / Autres plans d'eau
-  Non-Crown Land / Non Terre de La Couronne
-  Crown Land / Terre de la Couronne

Lake Depths (Metres)

Profondeur de Lac (Mètres)

-  -1.73 - 0
-  -2.93 - -1.73
-  -4.05 - -2.93
-  -5.04 - -4.05
-  -5.89 - -5.04
-  -6.59 - -5.89
-  -7.29 - -6.59
-  -8.36 - -7.29
-  -10.52 - -8.36