

Nepisiguit River Reservoir / Réservoir Nepisiguit River

Gloucester County / Comté de Gloucester

*Chaleur Recreational Fishing Area /
Zone de Pêche Récréative de Baie des Chaleurs*

47°23'48.3"N 65°48'37.6"W

Nepisiguit River Reservoir / Réservoir Nepisiguit River

Note: *The following maps are not designed for navigation purposes. Please exercise caution when using these maps as some shoals may not appear.*

Remarque: *Les cartes suivantes ne sont pas conçues à des fins de navigation. Faites preuve de prudence lors de l'utilisation de ces cartes, car certains hauts-fonds peuvent ne pas apparaître.*

<u>Lake Characteristics</u>	<u>Caractéristiques du lac</u>
Surface Area : 50.4 hectares / 124.5 acres Maximum Depth : 9.1 metres / 30 feet	Superficie : 50.4 hectares / 124.5 acres Profondeur maximale : 9.1 mètres / 30 pieds

<u>Species Present</u>	<u>Espèce Présente</u>
Sport Fish Brook Trout	Poisson sportif Truite mouchetée (Omble de fontaine)
Non-Sport Fish Banded Killifish Blacknose Dace Lake Chub Ninespine Stickleback White Sucker	Poisson non sportif Fondule barré Naseux noir Méné de lac Épinoche à neuf épines Meunier noir

This lake is not part of the fish stocking program.

Ce lac ne fait pas partie du programme d'empoissonnement.

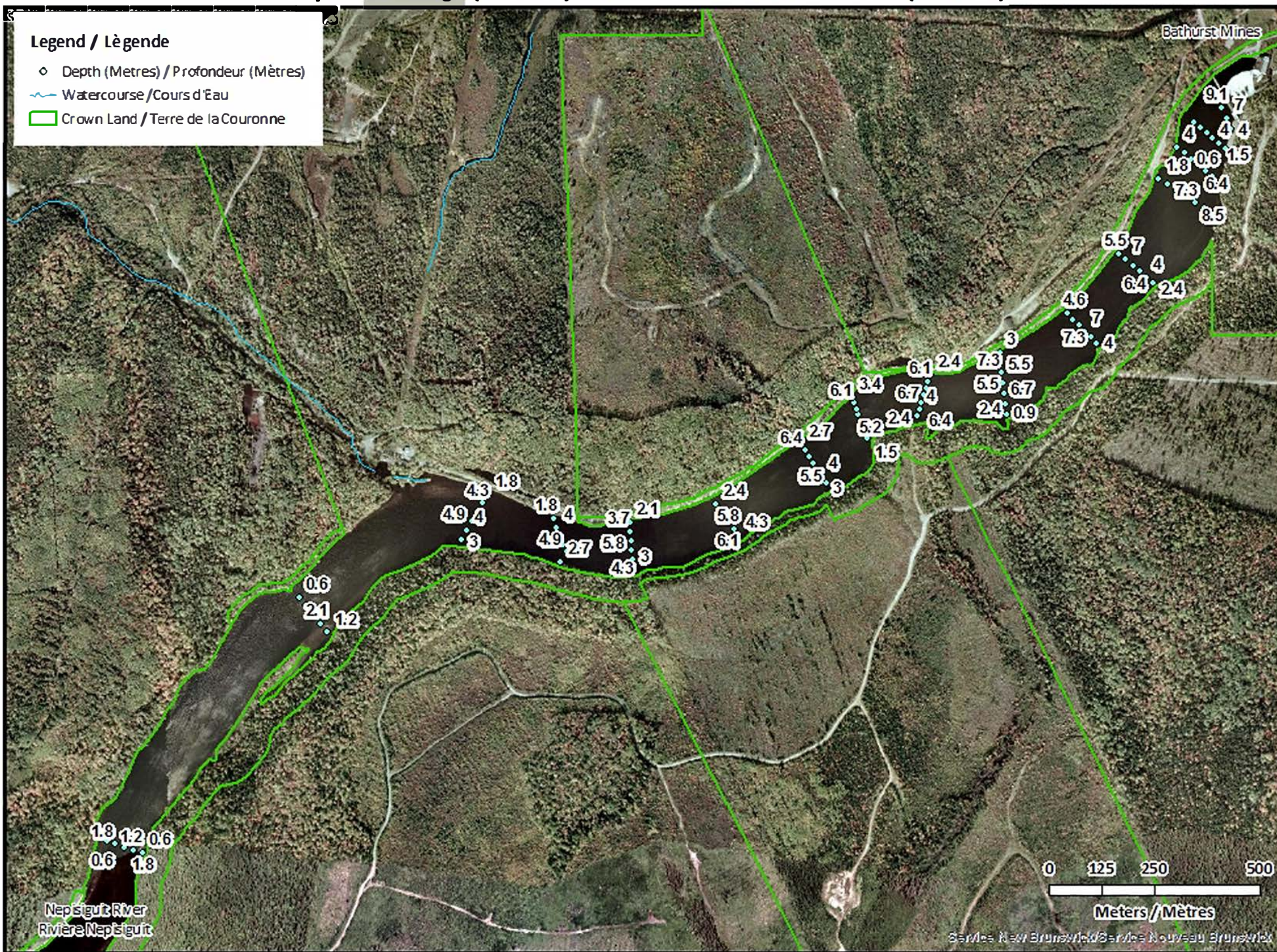
Nepisiguit River Reservoir / Réservoir Nepisiguit River

Depth Readings (Metres) / Indications de Profondeur (Mètres)



Legend / Légende

- ◊ Depth (Metres) / Profondeur (Mètres)
- ~ Watercourse / Cours d'Eau
- Crown Land / Terre de la Couronne



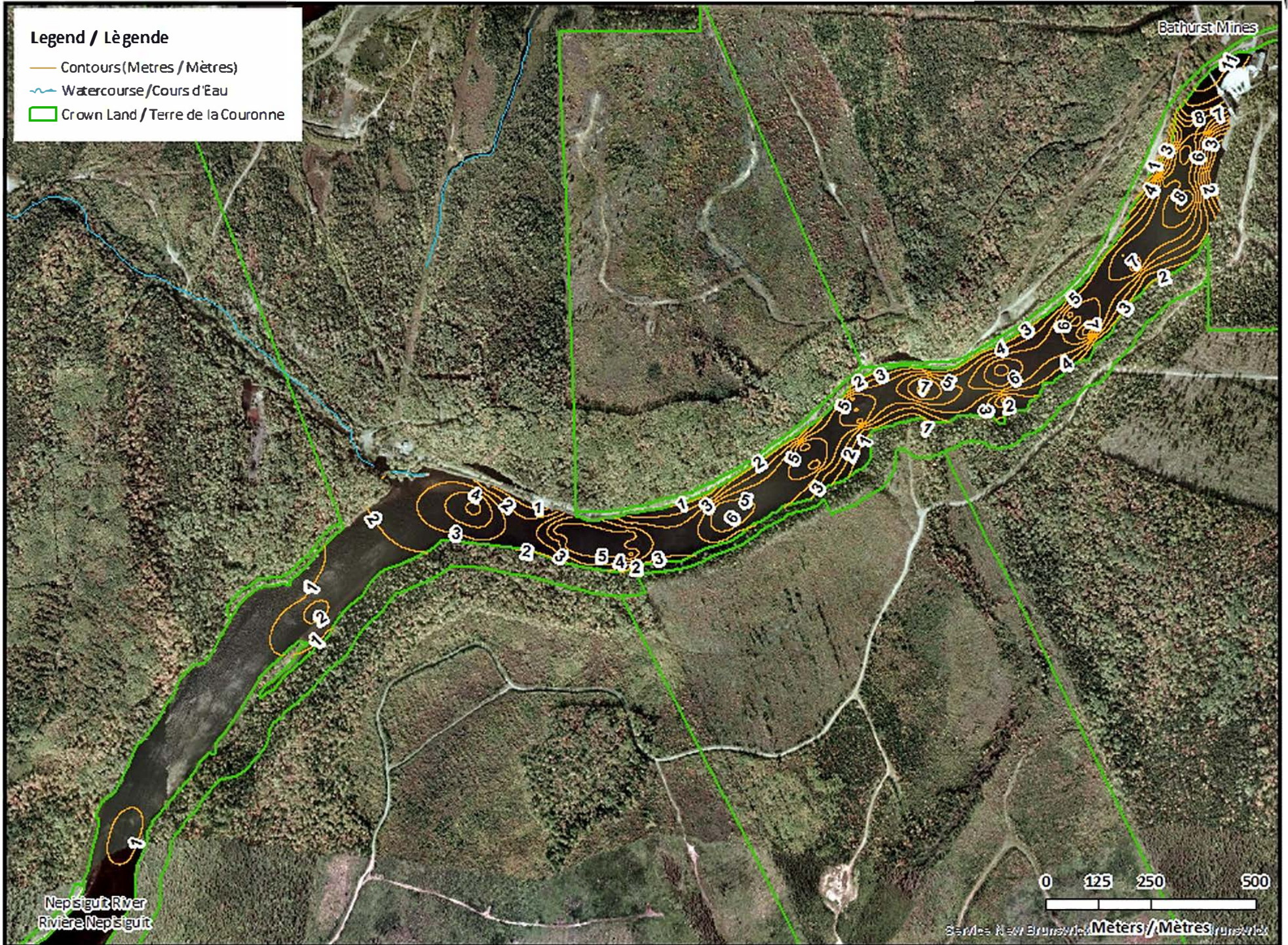
Nepisiguit River Reservoir / Réservoir Nepisiguit River

Contours (Metres / Mètres)



Legend / Légende

- Contours (Metres / Mètres)
- Watercourse / Cours d'Eau
- Crown Land / Terre de la Couronne





Nepisiguit River Reservoir / Réservoir Nepisiguit River

Depth (Metres) / Profondeur (Mètres)











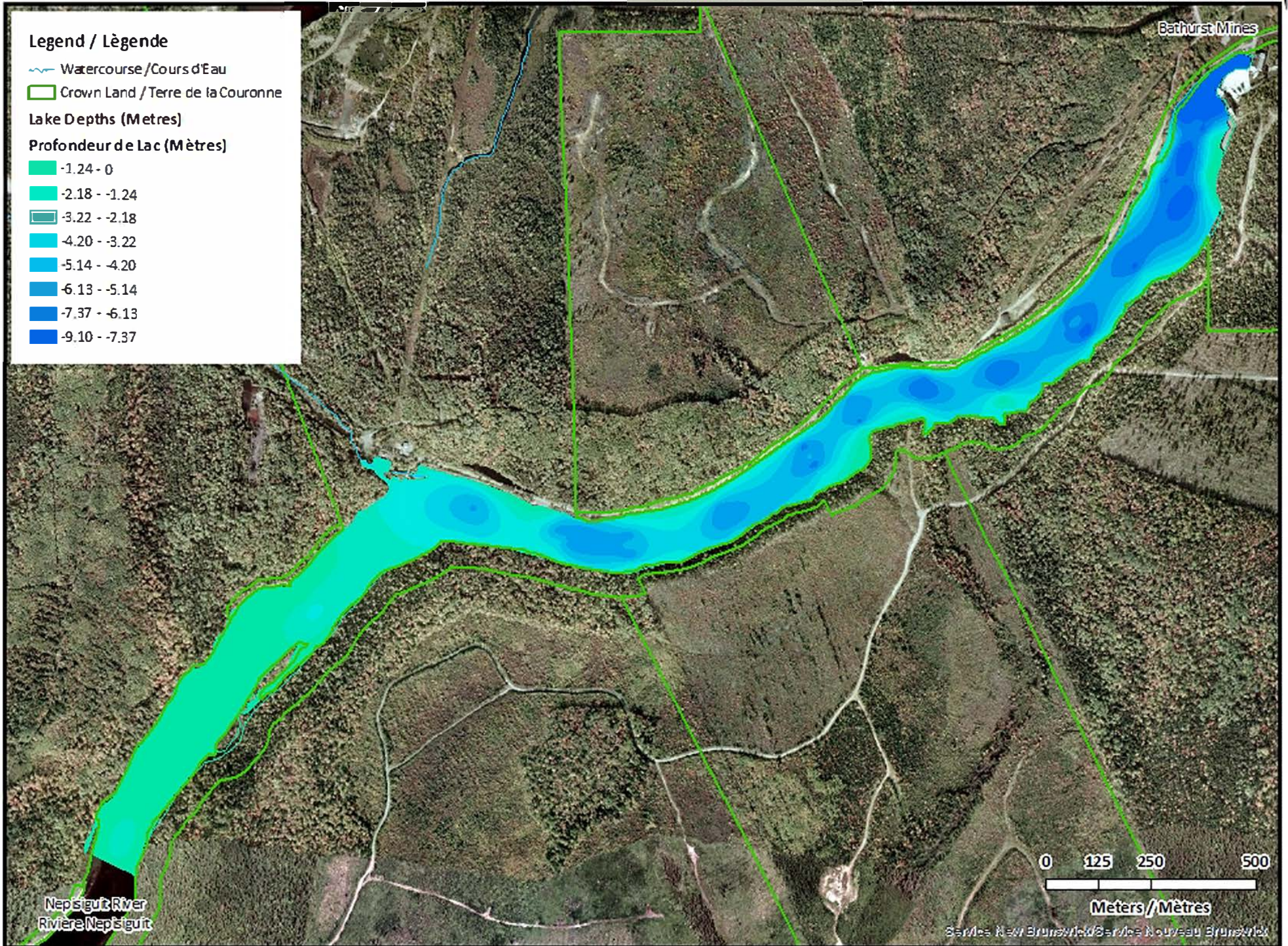
Legend / Légende

-  Watercourse / Cours d'Eau
-  Crown Land / Terre de la Couronne

Lake Depths (Metres)

Profondeur de Lac (Mètres)

-  -1.24 - 0
-  -2.18 - -1.24
-  -3.22 - -2.18
-  -4.20 - -3.22
-  -5.14 - -4.20
-  -6.13 - -5.14
-  -7.37 - -6.13
-  -9.10 - -7.37



Nepisiguit River
Rivière Nepisiguit

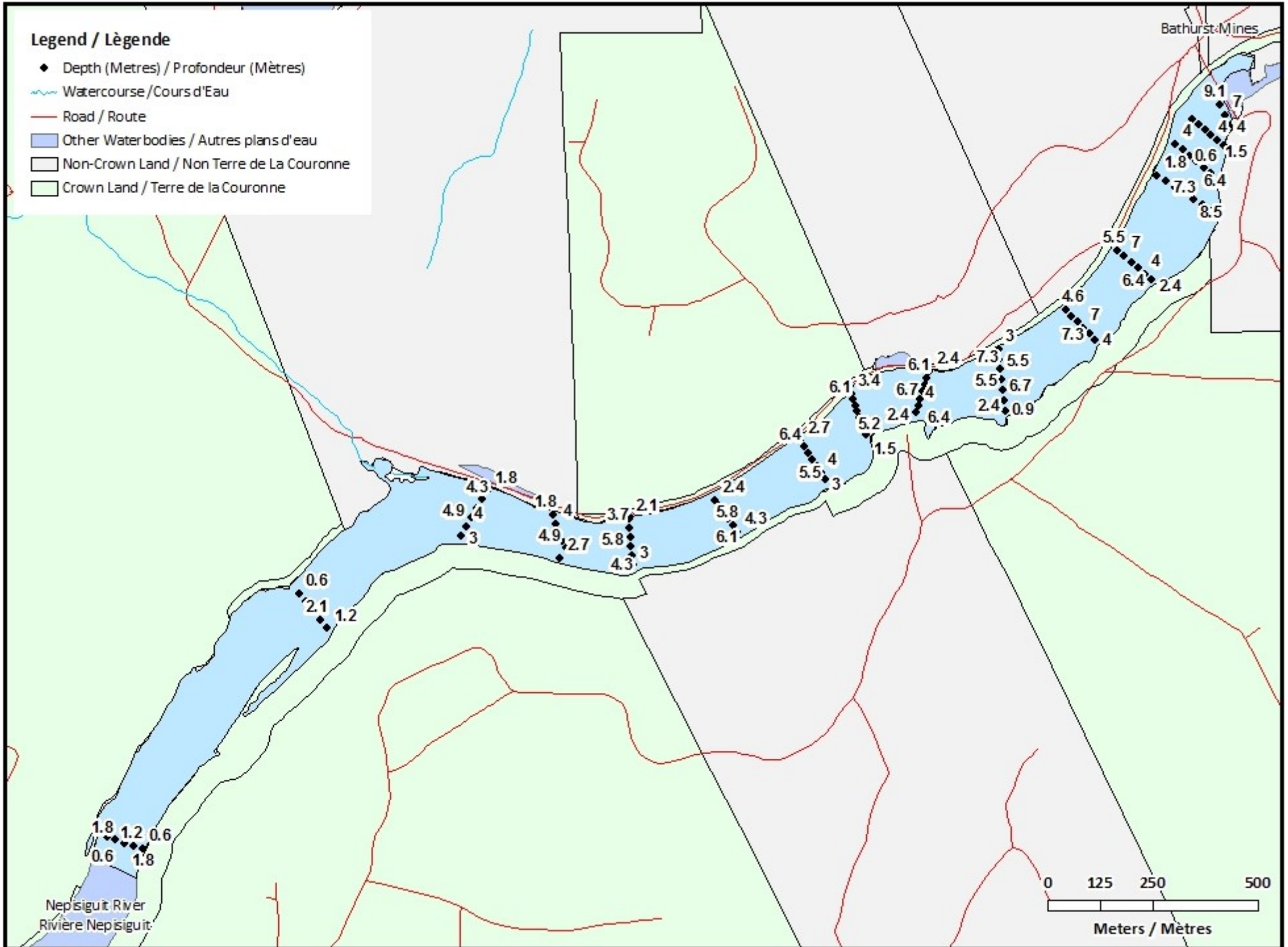
0 125 250 500

Meters / Mètres

Services New Brunswick / Services Nouveau Brunswick

Nepisiguit River Reservoir / Réservoir Nepisiguit River

Depth Readings (Metres) / Indications de Profondeur (Mètres)



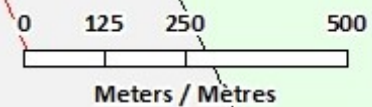
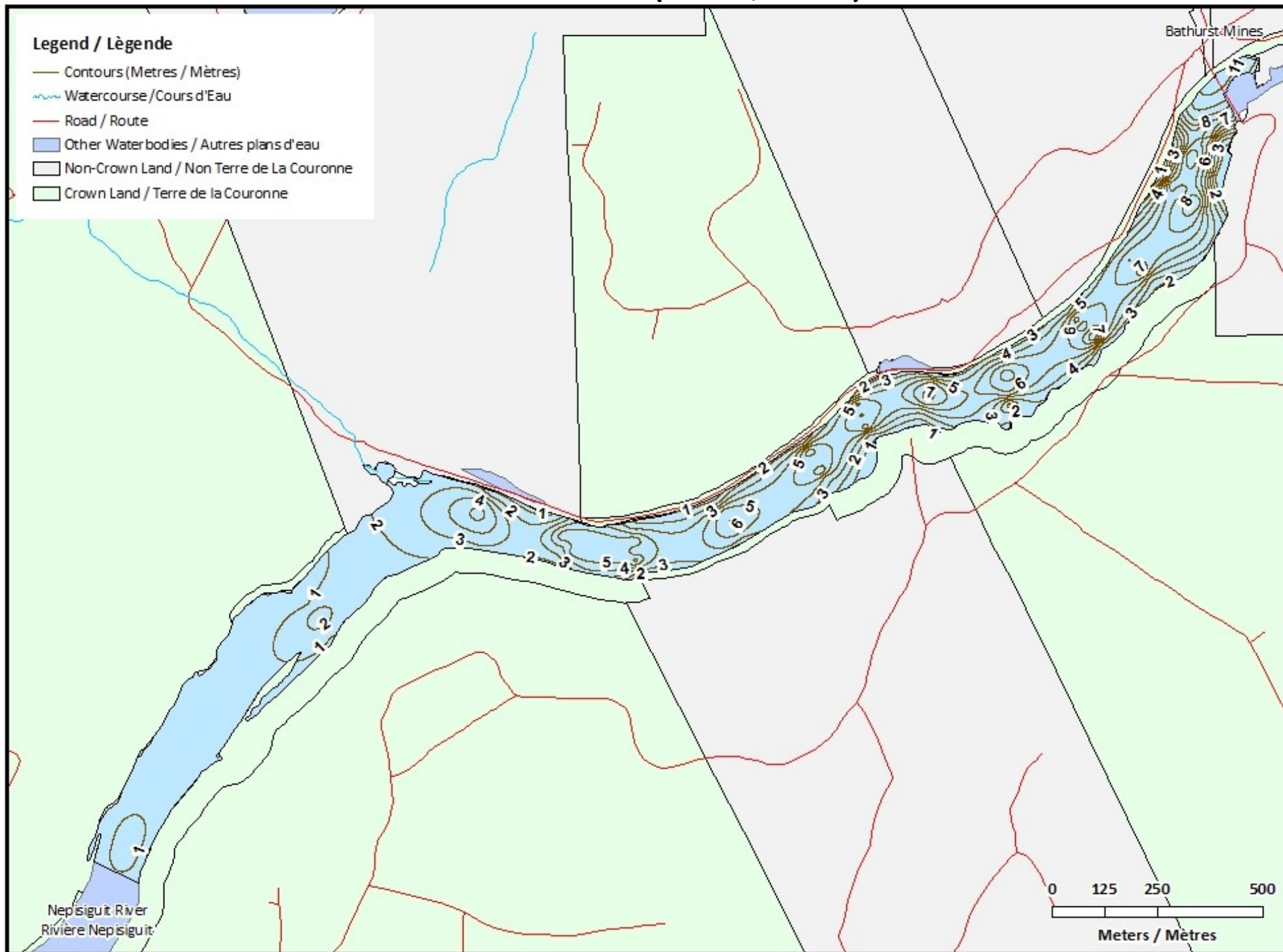
Nepisiguit River Reservoir / Réservoir Nepisiguit River

Contours (Metres / Mètres)



Legend / Légende

- Contours (Metres / Mètres)
- ~ Watercourse / Cours d'Eau
- Road / Route
- Other Waterbodies / Autres plans d'eau
- Non-Crown Land / Non Terre de La Couronne
- Crown Land / Terre de la Couronne








Nepisiguit River Reservoir / Réservoir Nepisiguit River

Depth (Metres) / Profondeur (Mètres)











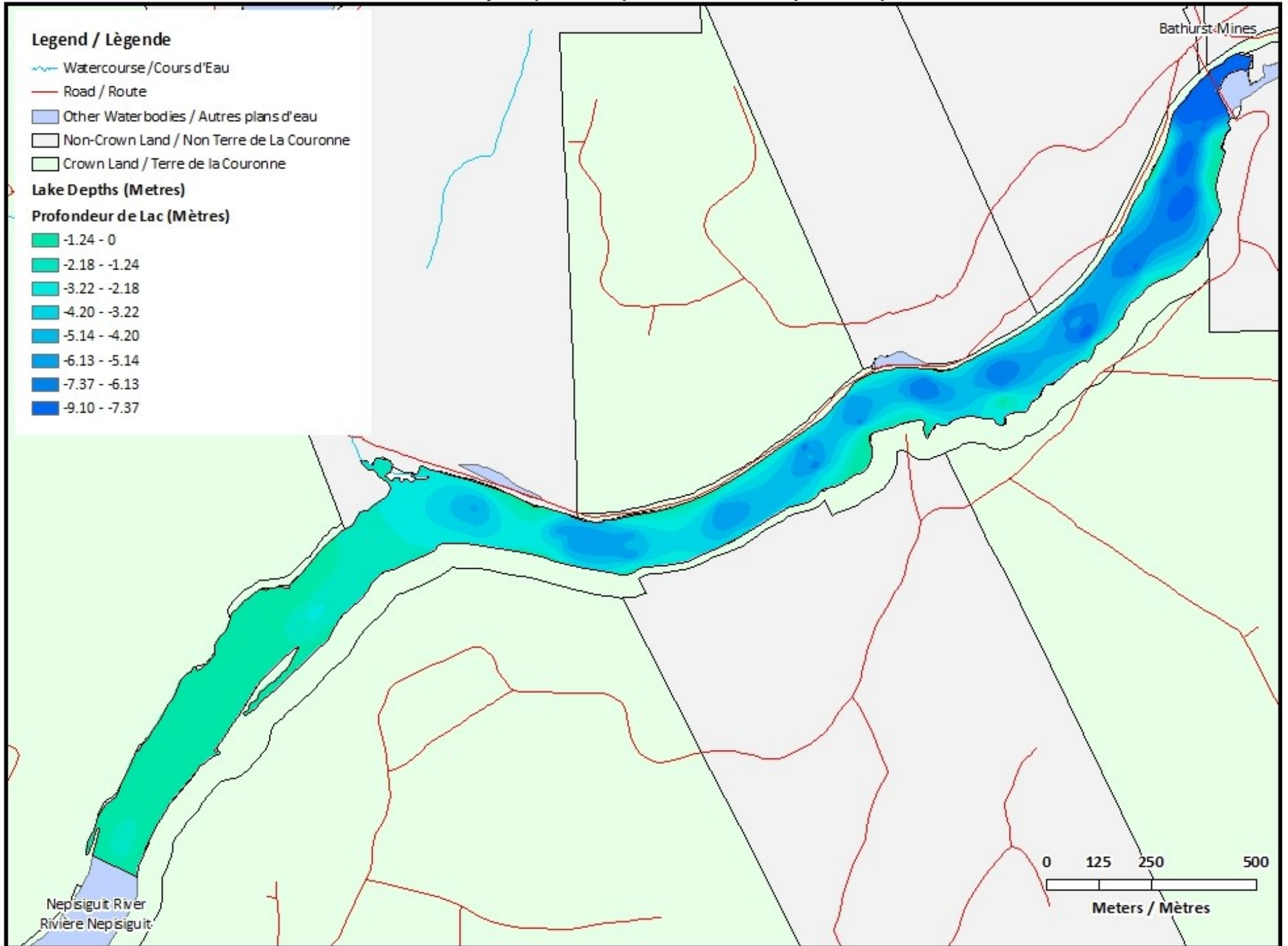
Legend / Légende

-  Watercourse / Cours d'Eau
-  Road / Route
-  Other Waterbodies / Autres plans d'eau
-  Non-Crown Land / Non Terre de La Couronne
-  Crown Land / Terre de la Couronne

Lake Depths (Metres)

Profondeur de Lac (Mètres)

-  -1.24 - 0
-  -2.18 - -1.24
-  -3.22 - -2.18
-  -4.20 - -3.22
-  -5.14 - -4.20
-  -6.13 - -5.14
-  -7.37 - -6.13
-  -9.10 - -7.37



Nepisiguit River
Rivière Nepisiguit

Bathurst Mines

0 125 250 500
Meters / Mètres