

Moose Lake / Lac Moose

Charlotte County / Comté de Charlotte

*Southwest Recreational Fishing Area /
Zone de Pêche Récréative de Sud-Ouest*

45°26'56.0"N 66°28'14.6"W

Moose Lake / Lac Moose

Note: *The following maps are not designed for navigation purposes. Please exercise caution when using these maps as some shoals may not appear.*

Remarque: *Les cartes suivantes ne sont pas conçues à des fins de navigation. Faites preuve de prudence lors de l'utilisation de ces cartes, car certains hauts-fonds peuvent ne pas apparaître.*

| <u>Lake Characteristics</u> | <u>Caractéristiques du lac</u> |
|--|---|
| Surface Area : 70.2 hectares / 173.5 acres Maximum Depth : 4.9 metres / 16 feet | Superficie : 70.2 hectares / 173.5 acres Profondeur maximale : 4.9 mètres / 16 pieds |

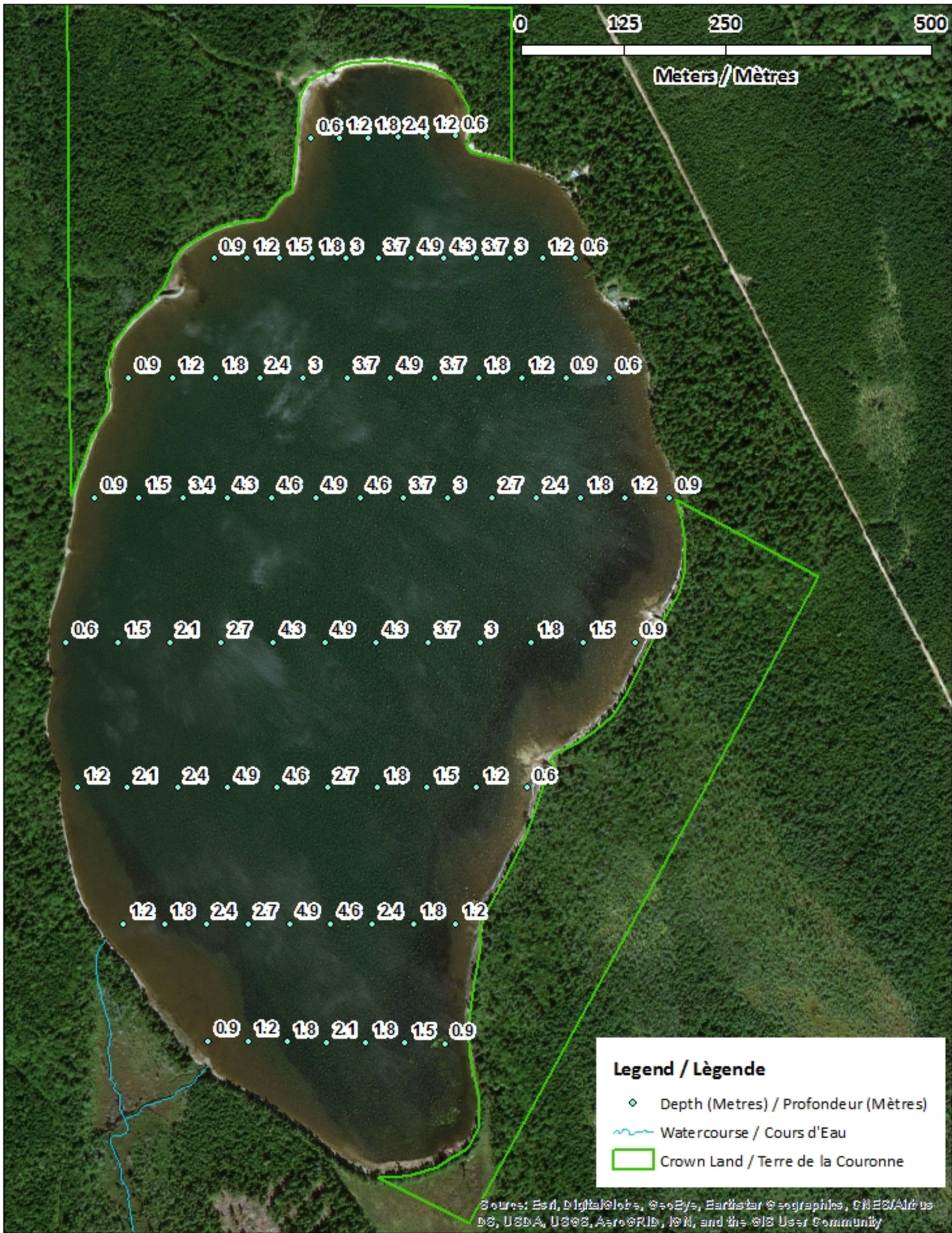
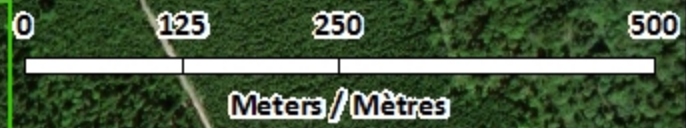
| <u>Species Present</u> | <u>Espèce Présente</u> |
|--|--|
| Sport Fish Brook Trout Landlocked Salmon | Poisson sportif Truite mouchetée (Omble de fontaine) Ouananiche |
| Non-Sport Fish American Eel Banded Killifish Common Shiner Fallfish Lake Chub Ninespine Stickleback White Sucker | Poisson non sportif Anguille d'Amérique Fondule barré Méné à nageoires rouges Mulet à cornes Méné de lac Épinoche à neuf épines Meunier noir |

This lake is not part of the fish stocking program.

Ce lac ne fait pas partie du programme d'empoissonnement.

Moose Lake / Lac Moose

Depth Readings (Metres) / Indications de Profondeur (Mètres)



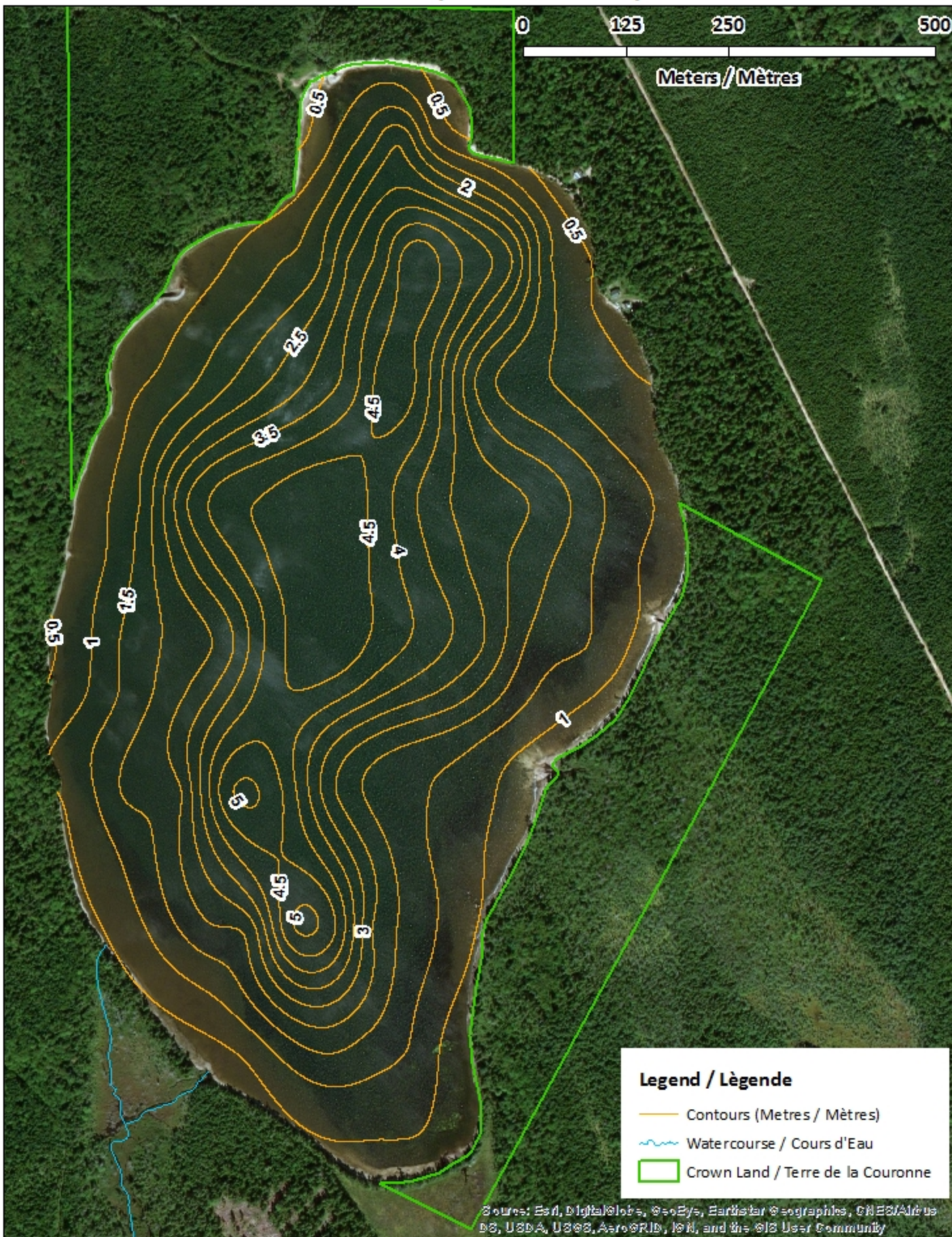
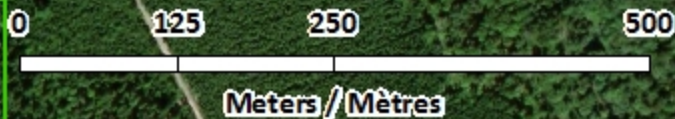
Legend / Légende

-  Depth (Metres) / Profondeur (Mètres)
-  Watercourse / Cours d'Eau
-  Crown Land / Terre de la Couronne

Sources: Esri, DigitalGlobe, GeoEye, Earthstar Geographics, CNES/Airbus DS, USDA, USGS, AeroGRID, IGN, and the GIS User Community

Moose Lake / Lac Moose

Contours (Metres / Mètres)



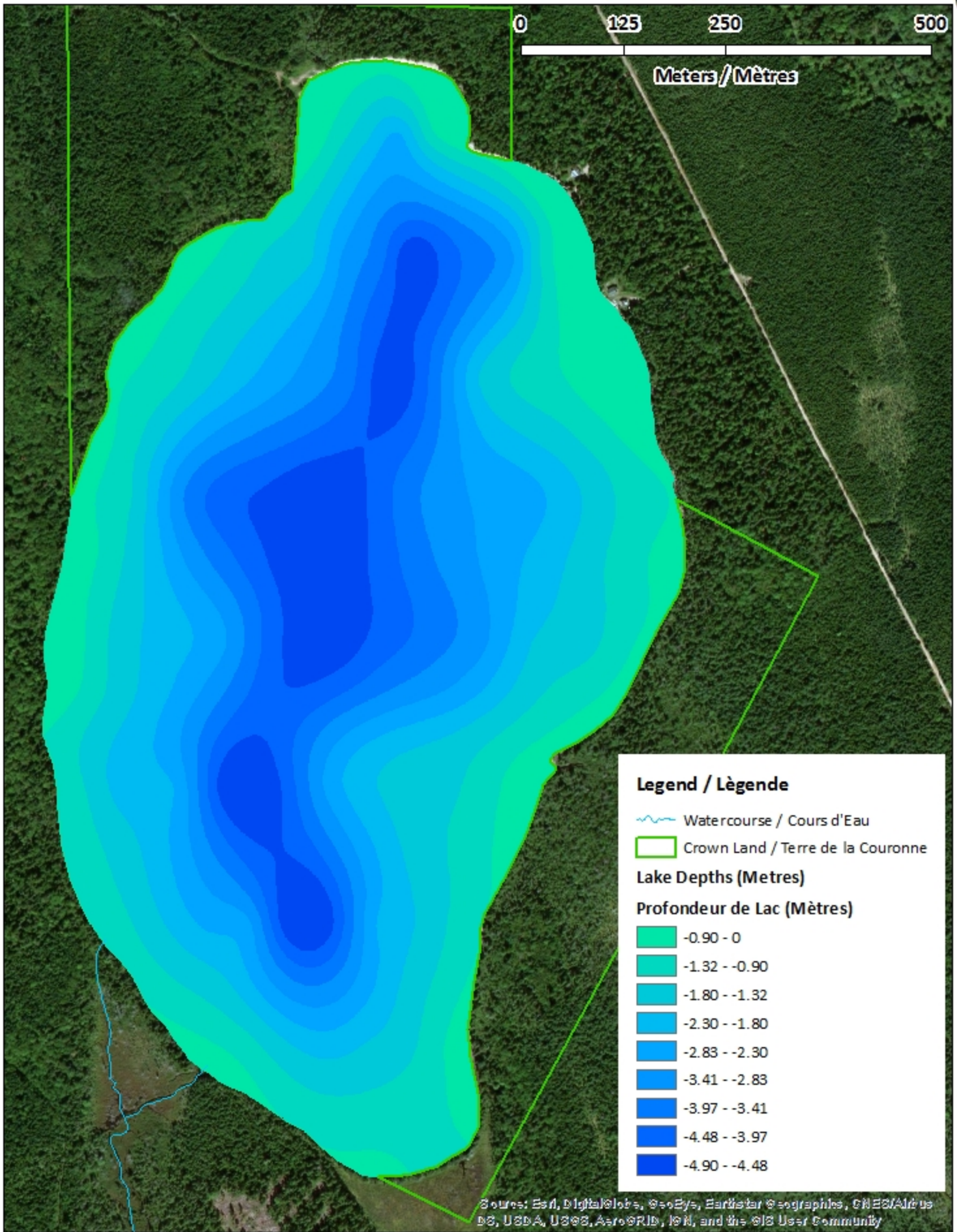
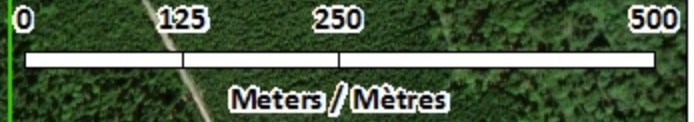
Legend / Légende

- Contours (Metres / Mètres)
- ~ Watercourse / Cours d'Eau
- Crown Land / Terre de la Couronne



Sources: Esri, DigitalGlobe, GeoEye, Earthstar Geographics, CNES/Airbus DS, USDA, USGS, AeroGRID, IGN, and the GIS User Community

Moose Lake / Lac Moose










Depth (Metres) / Profondeur (Mètres)



Legend / Légende

-  Watercourse / Cours d'Eau
-  Crown Land / Terre de la Couronne

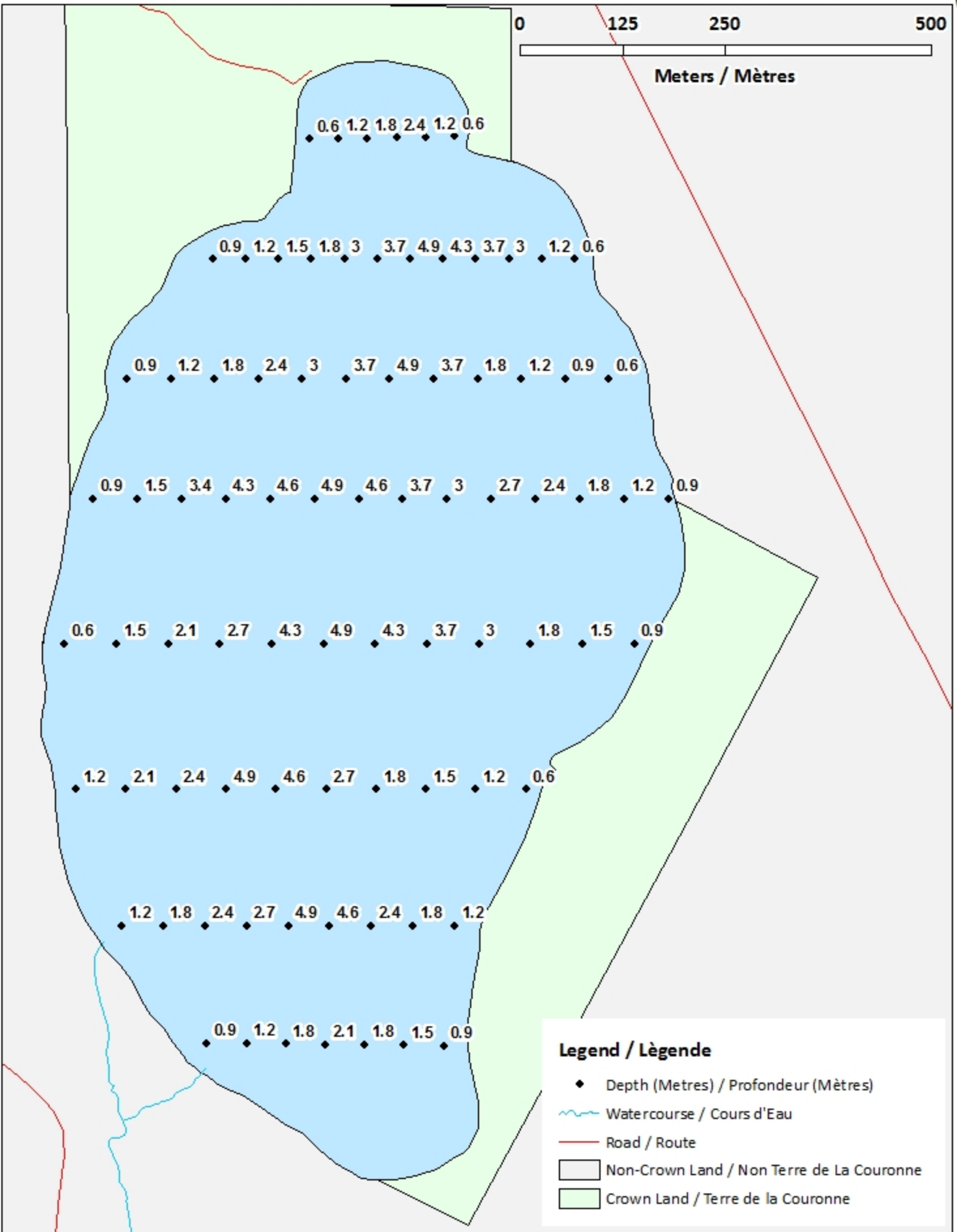
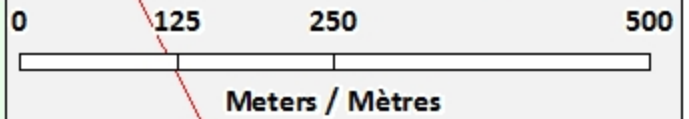
Lake Depths (Metres) Profondeur de Lac (Mètres)

-  -0.90 - 0
-  -1.32 - -0.90
-  -1.80 - -1.32
-  -2.30 - -1.80
-  -2.83 - -2.30
-  -3.41 - -2.83
-  -3.97 - -3.41
-  -4.48 - -3.97
-  -4.90 - -4.48

Sources: Esri, DigitalGlobe, GeoEye, Earthstar Geographics, CNES/Airbus DS, USDA, USGS, AeroGRID, IGN, and the GIS User Community

Moose Lake / Lac Moose

Depth Readings (Metres) / Indications de Profondeur (Mètres)

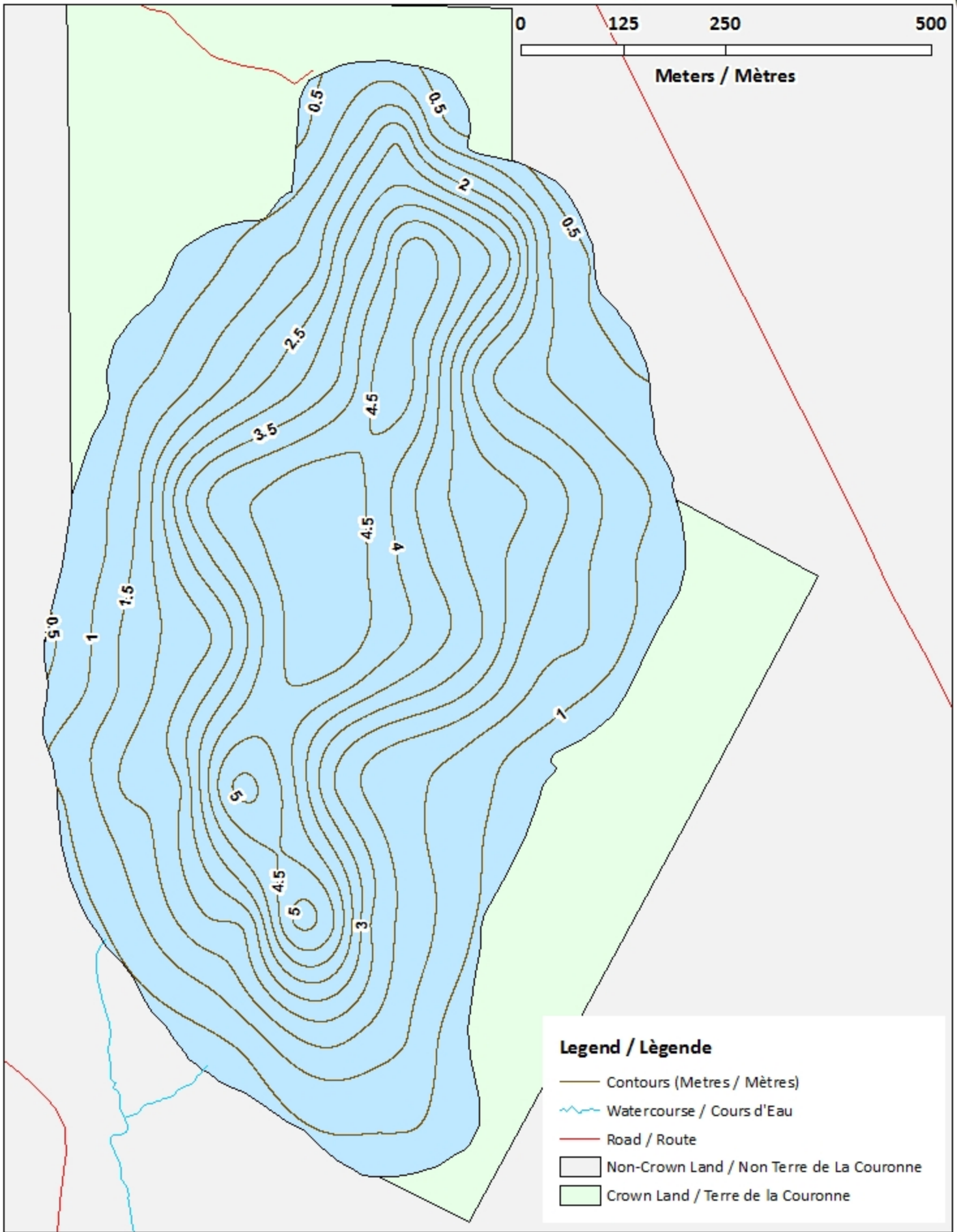
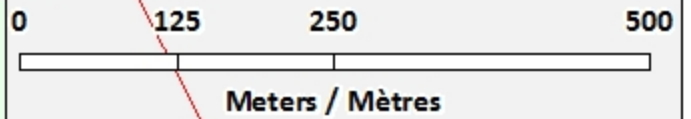


Legend / Légende

- ◆ Depth (Metres) / Profondeur (Mètres)
- ~ Watercourse / Cours d'Eau
- Road / Route
- Non-Crown Land / Non Terre de La Couronne
- Crown Land / Terre de la Couronne

Moose Lake / Lac Moose

Contours (Metres / Mètres)

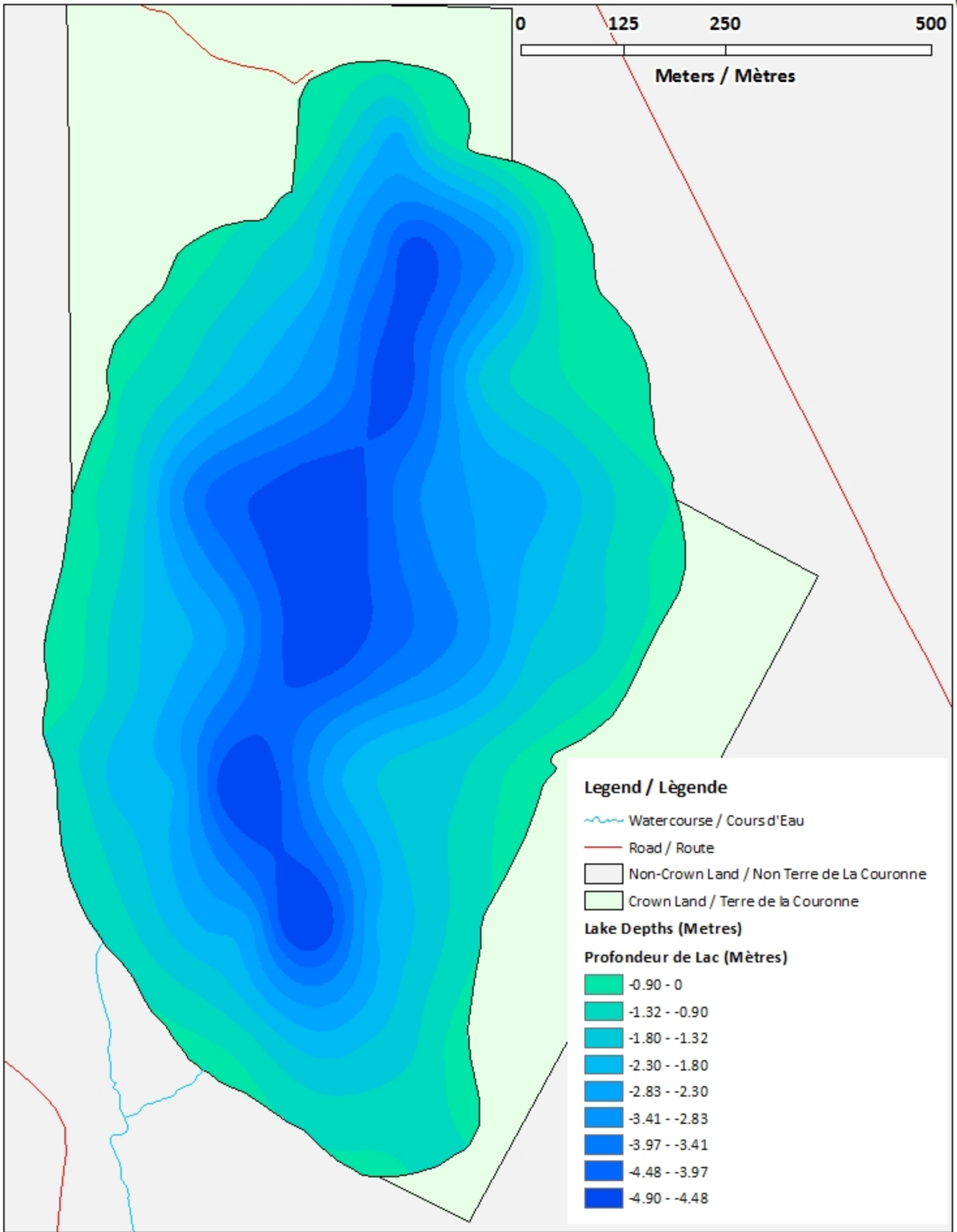
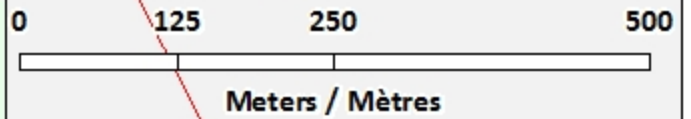


Legend / Légende

- Contours (Metres / Mètres)
- ~ Watercourse / Cours d'Eau
- Road / Route
- Non-Crown Land / Non Terre de La Couronne
- Crown Land / Terre de la Couronne

Moose Lake / Lac Moose

Depth (Metres) / Profondeur (Mètres)



Legend / Légende

- Watercourse / Cours d'Eau
- Road / Route
- Non-Crown Land / Non Terre de la Couronne
- Crown Land / Terre de la Couronne

Lake Depths (Metres)

Profondeur de Lac (Mètres)

- 0.90 - 0
- 1.32 - -0.90
- 1.80 - -1.32
- 2.30 - -1.80
- 2.83 - -2.30
- 3.41 - -2.83
- 3.97 - -3.41
- 4.48 - -3.97
- 4.90 - -4.48