

Maquapit Lake / Lac Maquapit

Queens County / Comté de Queens

*Upper Saint John Recreational Fishing Area /
Zone de Pêche Récréative de Bas Saint-Jean*

45°54'53.2"N 66°11'03.3"W

Maquapit Lake / Lac Maquapit

Note: *The following maps are not designed for navigation purposes. Please exercise caution when using these maps as some shoals may not appear.*

Remarque: *Les cartes suivantes ne sont pas conçues à des fins de navigation. Faites preuve de prudence lors de l'utilisation de ces cartes, car certains hauts-fonds peuvent ne pas apparaître.*

<u>Lake Characteristics</u>	<u>Caractéristiques du lac</u>
Surface Area : 1,843.2 hectares / 4,554.5 acres Maximum Depth : 7.6 metres / 25 feet	Superficie : 1,843.2 hectares / 4,554.5 acres Profondeur maximale : 7.6 mètres / 25 pieds

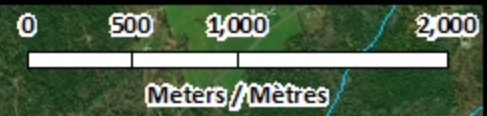
<u>Species Present</u>	<u>Espèce Présente</u>
Sport Fish Atlantic Salmon Brook Trout	Poisson sportif Saumon atlantique Truite mouchetée (Omble de fontaine)
Non-Sport Fish Alewife American Eel American Shad Atlantic Sturgeon Brown Bullhead Burbot Chain Pickerel Common Shiner Fallfish Golden Shiner Lake Chub Pumpkinseed Rainbow Smelt Redbreast Sunfish Sea Lamprey Shortnose Sturgeon Slimy Sculpin Striped Bass Threespine Stickleback White perch White Sucker Yellow Perch	Poisson non sportif Gaspereau Anguille d'Amérique Alose savoureuse Esturgeon noir Barbotte brune Lotte Brochet maillé Méné à nageoires rouges Ouitouche Méné jaune Méné de lac Crapet-soleil Éperlan arc-en-ciel Crapet rouge Lamproie marine Esturgeon à museau court Chabot visqueux Bar rayé Épinoche à trois épines Baret Meunier noir Perchaude

This lake is not part of the fish stocking program.

Ce lac ne fait pas partie du programme d'empoissonnement.

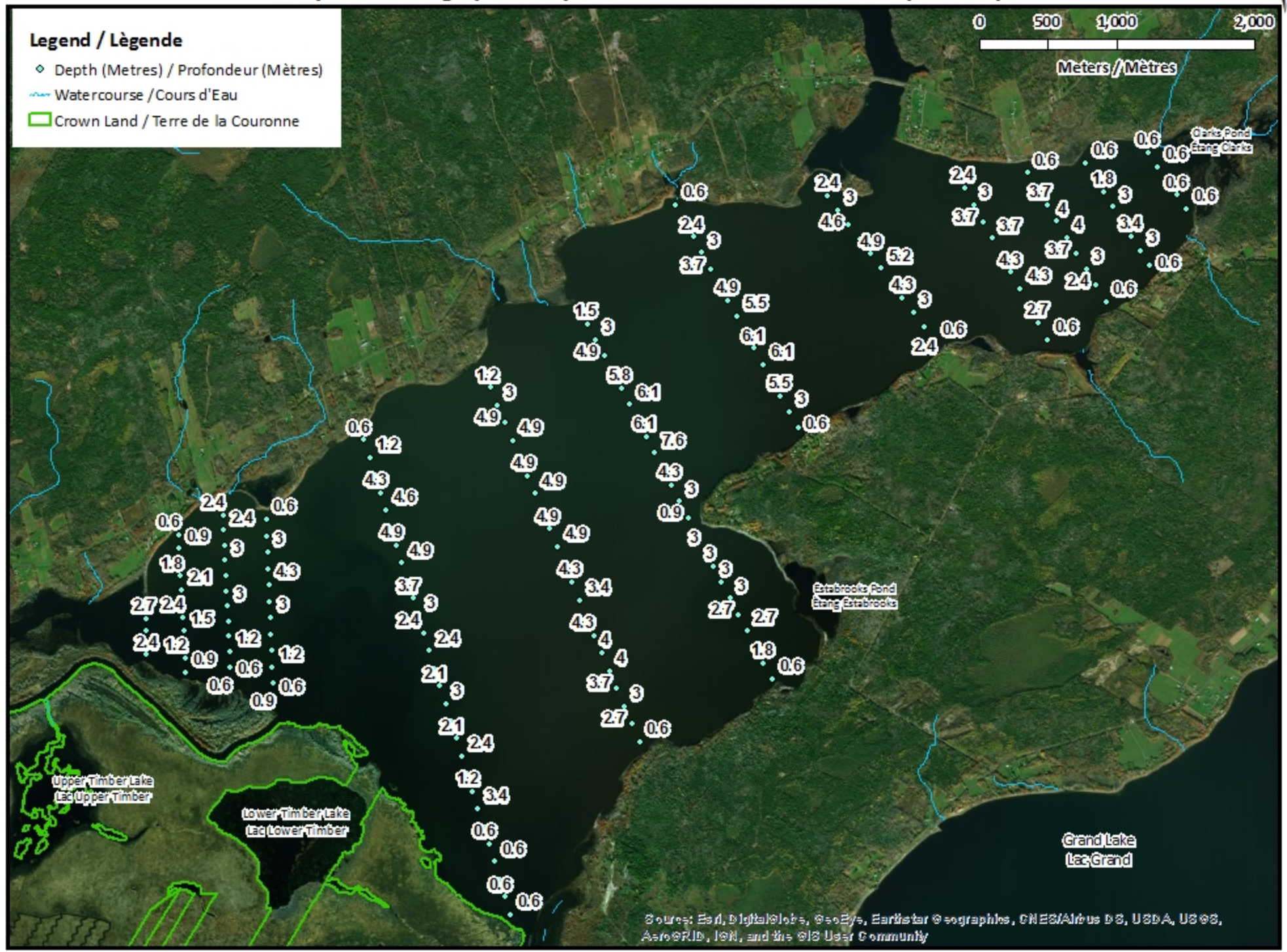
Maquapit Lake / Lac Maquapit

Depth Readings (Metres) / Indications de Profondeur (Mètres)



Legend / Légende

- ◆ Depth (Metres) / Profondeur (Mètres)
- Watercourse / Cours d'Eau
- Crown Land / Terre de la Couronne



Source: Esri, DigitalGlobe, GeoEye, Earthstar Geographics, CNES/Airbus DS, USDA, USGS, AeroGRID, IGN, and the GIS User Community

Maquapit Lake / Lac Maquapit Contours (Metres / Mètres)

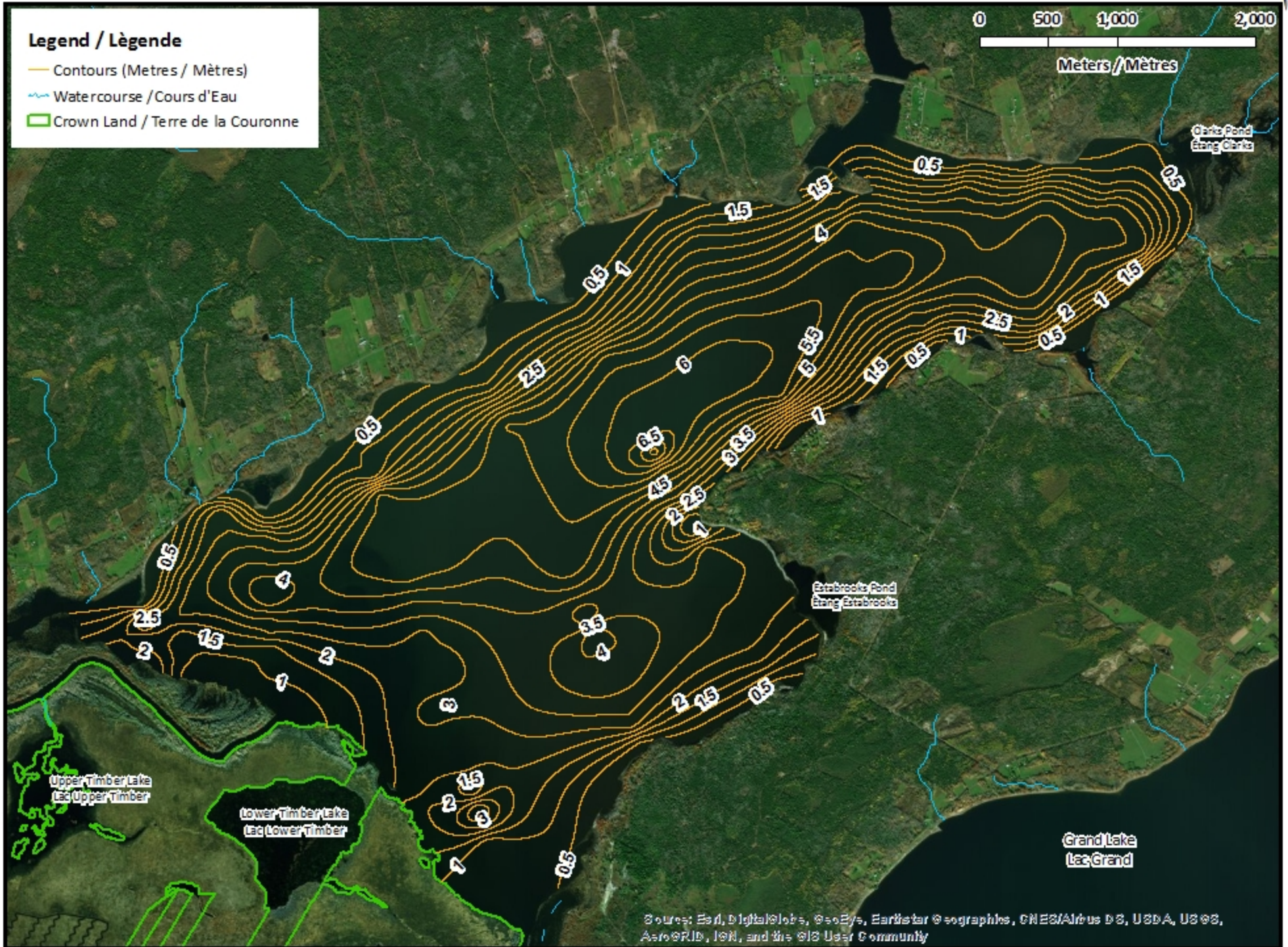


Legend / Légende

- Contours (Metres / Mètres)
- ~ Watercourse / Cours d'Eau
- Crown Land / Terre de la Couronne

0 500 1,000 2,000

Meters / Mètres





Source: Esri, DigitalGlobe, GeoEye, Earthstar Geographics, CNES/Airbus DS, USDA, USGS, AeroGRID, IGN, and the GIS User Community










Maquapit Lake / Lac Maquapit

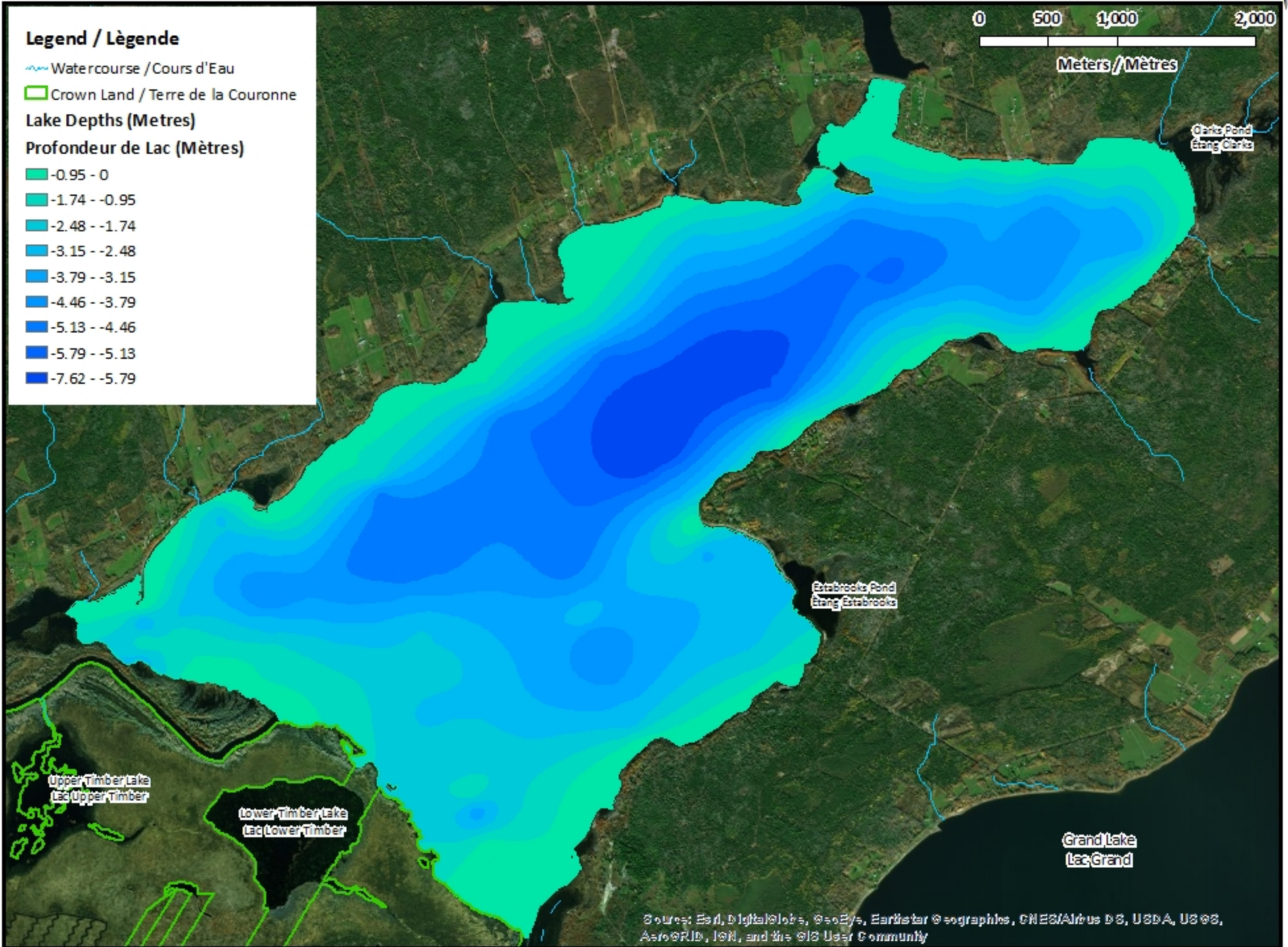
Depth (Metres) / Profondeur (Mètres)



Legend / Légende

-  Watercourse / Cours d'Eau
-  Crown Land / Terre de la Couronne
- Lake Depths (Metres)**
Profondeur de Lac (Mètres)

-  -0.95 - 0
-  -1.74 - -0.95
-  -2.48 - -1.74
-  -3.15 - -2.48
-  -3.79 - -3.15
-  -4.46 - -3.79
-  -5.13 - -4.46
-  -5.79 - -5.13
-  -7.62 - -5.79



Source: Esri, DigitalGlobe, GeoEye, Earthstar Geographics, CNES/Airbus DS, USDA, USGS, AeroGRID, IGN, and the GIS User Community

Maquapit Lake / Lac Maquapit

Depth Readings (Metres) / Indications de Profondeur (Mètres)

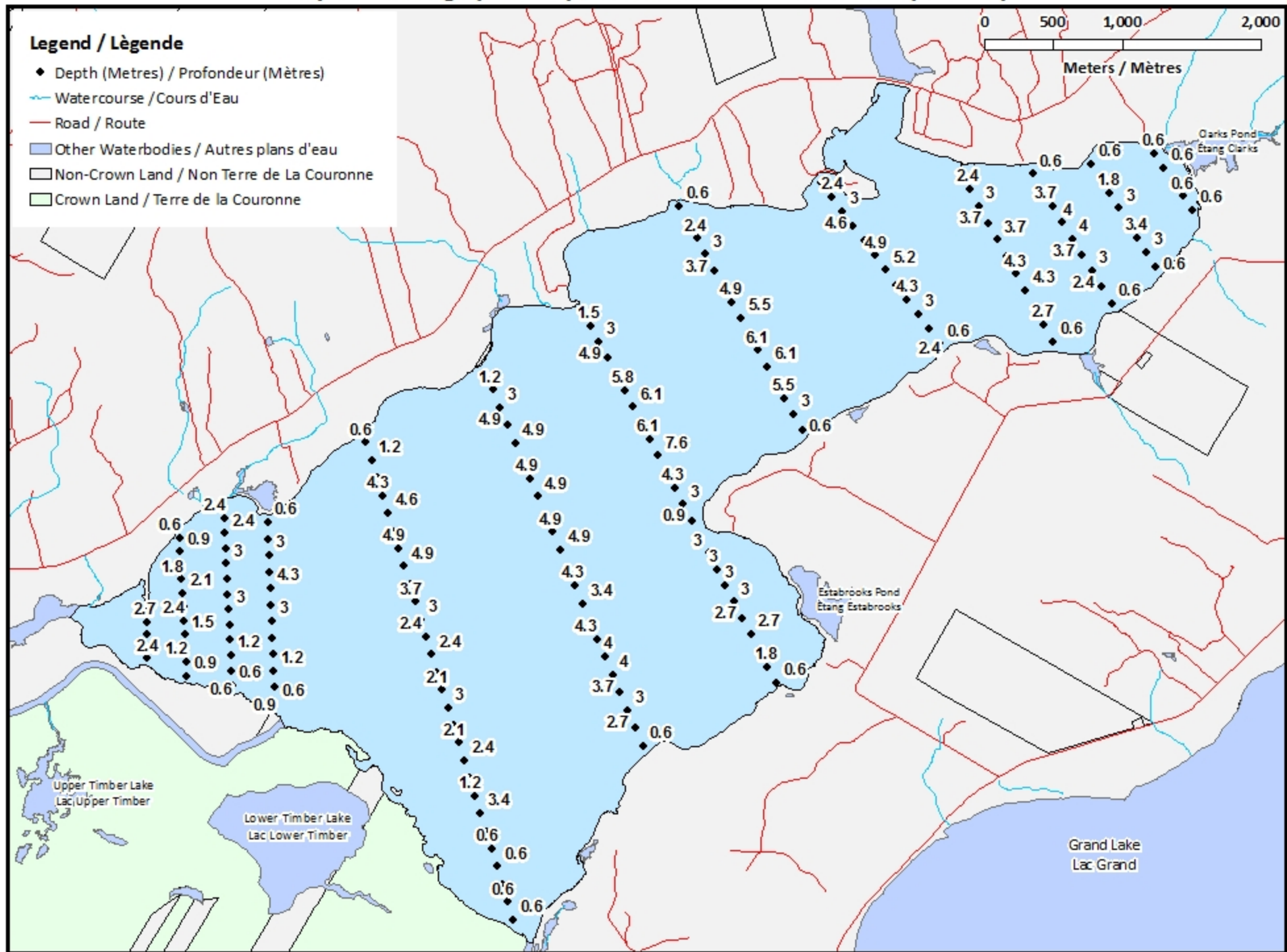


0 500 1,000 2,000

Meters / Mètres

Legend / Légende

- ◆ Depth (Metres) / Profondeur (Mètres)
- Watercourse / Cours d'Eau
- Road / Route
- Other Waterbodies / Autres plans d'eau
- Non-Crown Land / Non Terre de La Couronne
- Crown Land / Terre de la Couronne



Clarks Pond
Étang Clarks

Estabrooks Pond
Étang Estabrooks

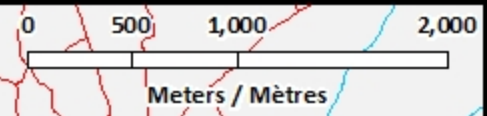
Upper Timber Lake
Lac Upper Timber

Lower Timber Lake
Lac Lower Timber

Grand Lake
Lac Grand

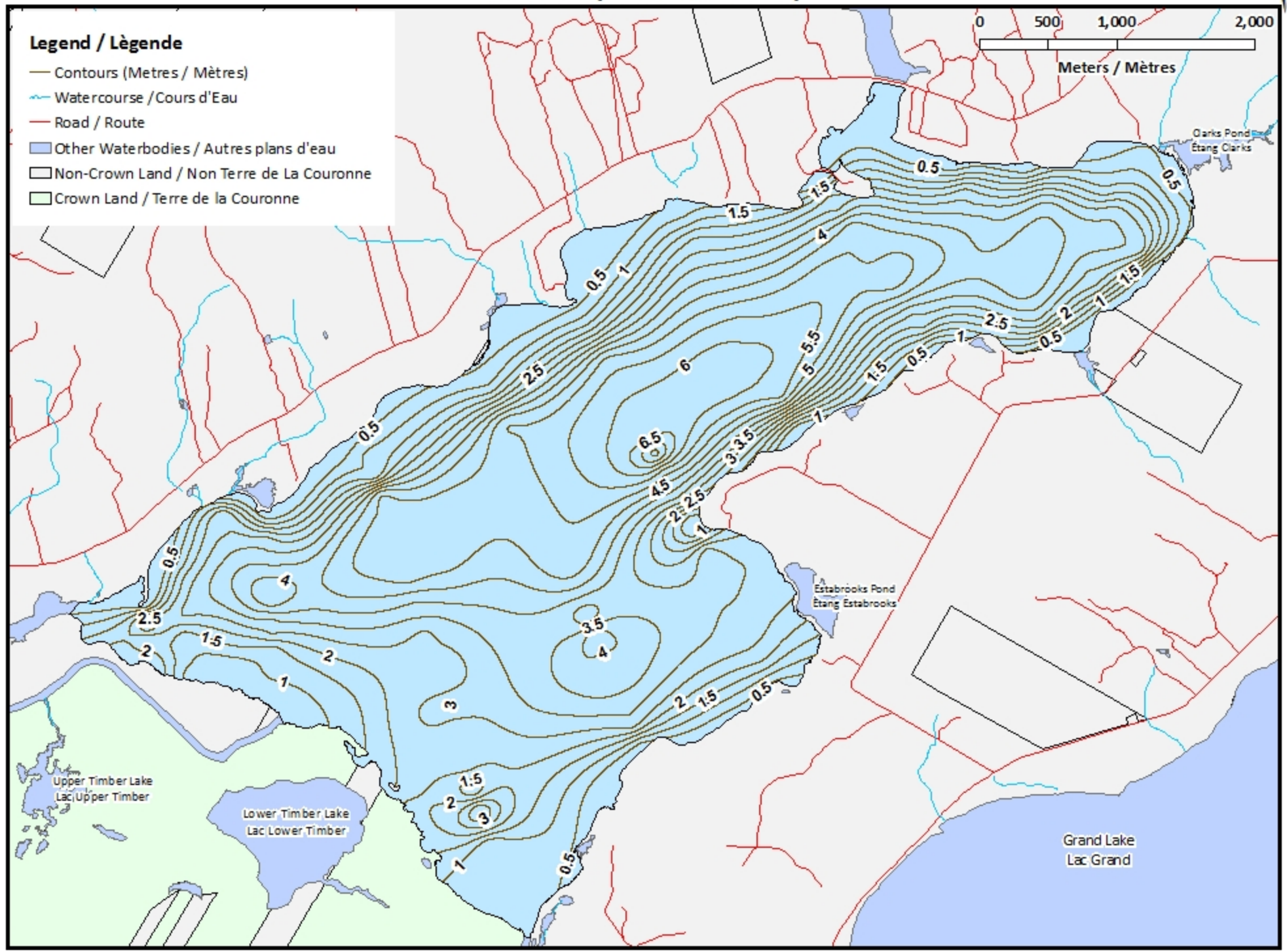
Maquapit Lake / Lac Maquapit

Contours (Metres / Mètres)



Legend / Légende

- Contours (Metres / Mètres)
- Watercourse / Cours d'Eau
- Road / Route
- Other Waterbodies / Autres plans d'eau
- Non-Crown Land / Non Terre de La Couronne
- Crown Land / Terre de la Couronne



Maquapit Lake / Lac Maquapit

Depth (Metres) / Profondeur (Mètres)

