

## **Lower Peaked Mountain Lake / Lac Lower Peaked Mountain**

*Northumberland County / Comté de Northumberland*

*Miramichi Recreational Fishing Area /  
Zone de Pêche Récréative de Miramichi*

**46°43'57.9"N 66°30'53.5"W**

## Lower Peaked Mountain Lake / Lac Lower Peaked Mountain

**Note:** *The following maps are not designed for navigation purposes. Please exercise caution when using these maps as some shoals may not appear.*

**Remarque:** *Les cartes suivantes ne sont pas conçues à des fins de navigation. Faites preuve de prudence lors de l'utilisation de ces cartes, car certains hauts-fonds peuvent ne pas apparaître.*

<u>Lake Characteristics</u>	<u>Caractéristiques du lac</u>
Surface Area : 10.2 hectares / 25.2 acres Maximum Depth : 4.6 metres / 16 feet	Superficie : 10.2 hectares / 25.2 acres Profondeur maximale : 4.6 mètres / 16 pieds

<u>Species Present</u>	<u>Espèce Présente</u>
<b>Sport Fish</b> Brook Trout	<b>Poisson sportif</b> Truite mouchetée (Ombles de fontaine)
<b>Non-Sport Fish</b> Blacknose Dace	<b>Poisson non sportif</b> Naseux noir

This lake is not part of the fish stocking program.

Ce lac ne fait pas partie du programme d'empoissonnement.

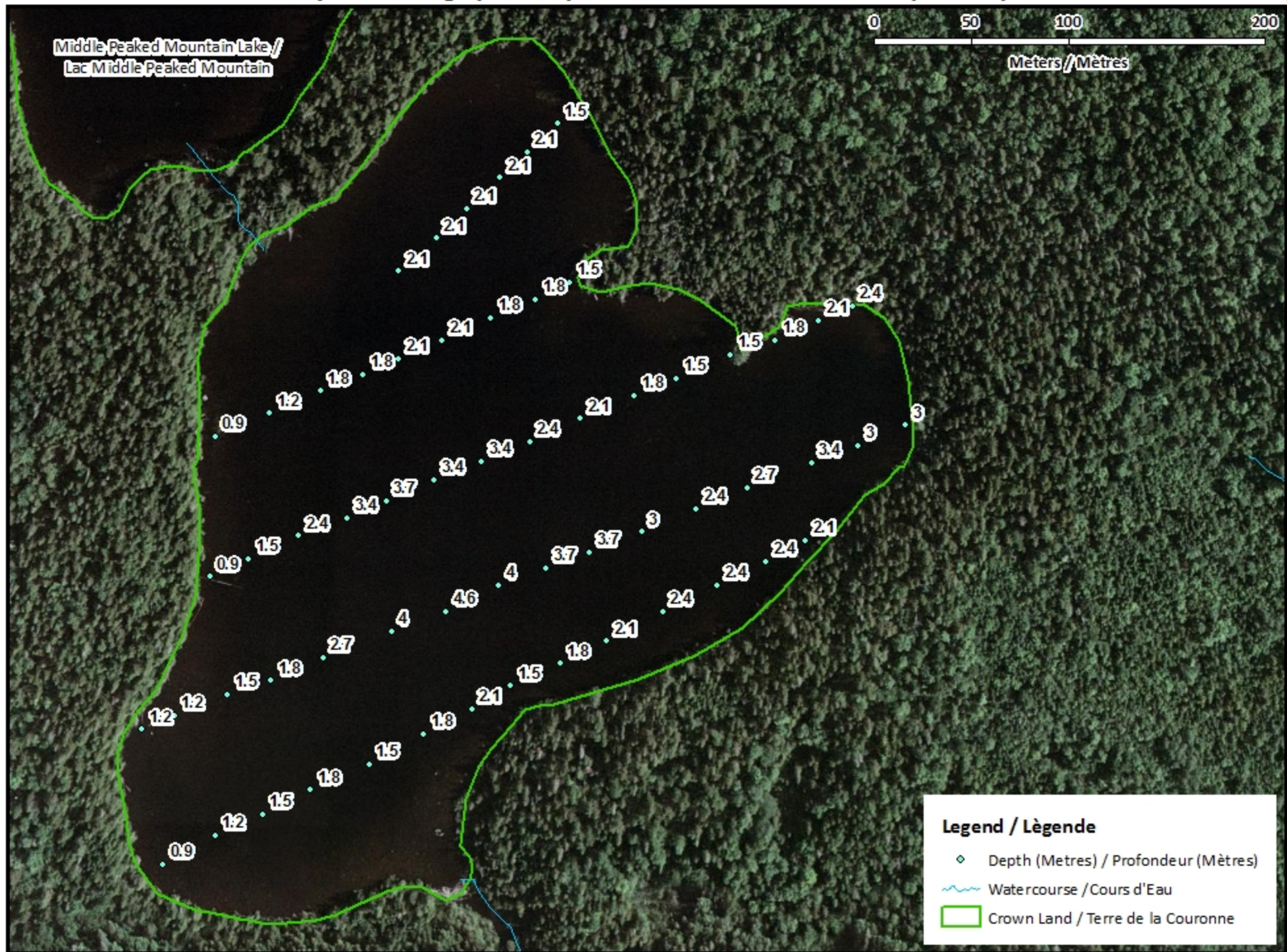


# Lower Peaked Mountain Lake / Lac Lower Peaked Mountain

## Depth Readings (Metres) / Indications de Profondeur (Mètres)



Middle Peaked Mountain Lake /  
Lac Middle Peaked Mountain



### Legend / Légende

- ◆ Depth (Metres) / Profondeur (Mètres)
- ~ Watercourse / Cours d'Eau
- ▭ Crown Land / Terre de la Couronne

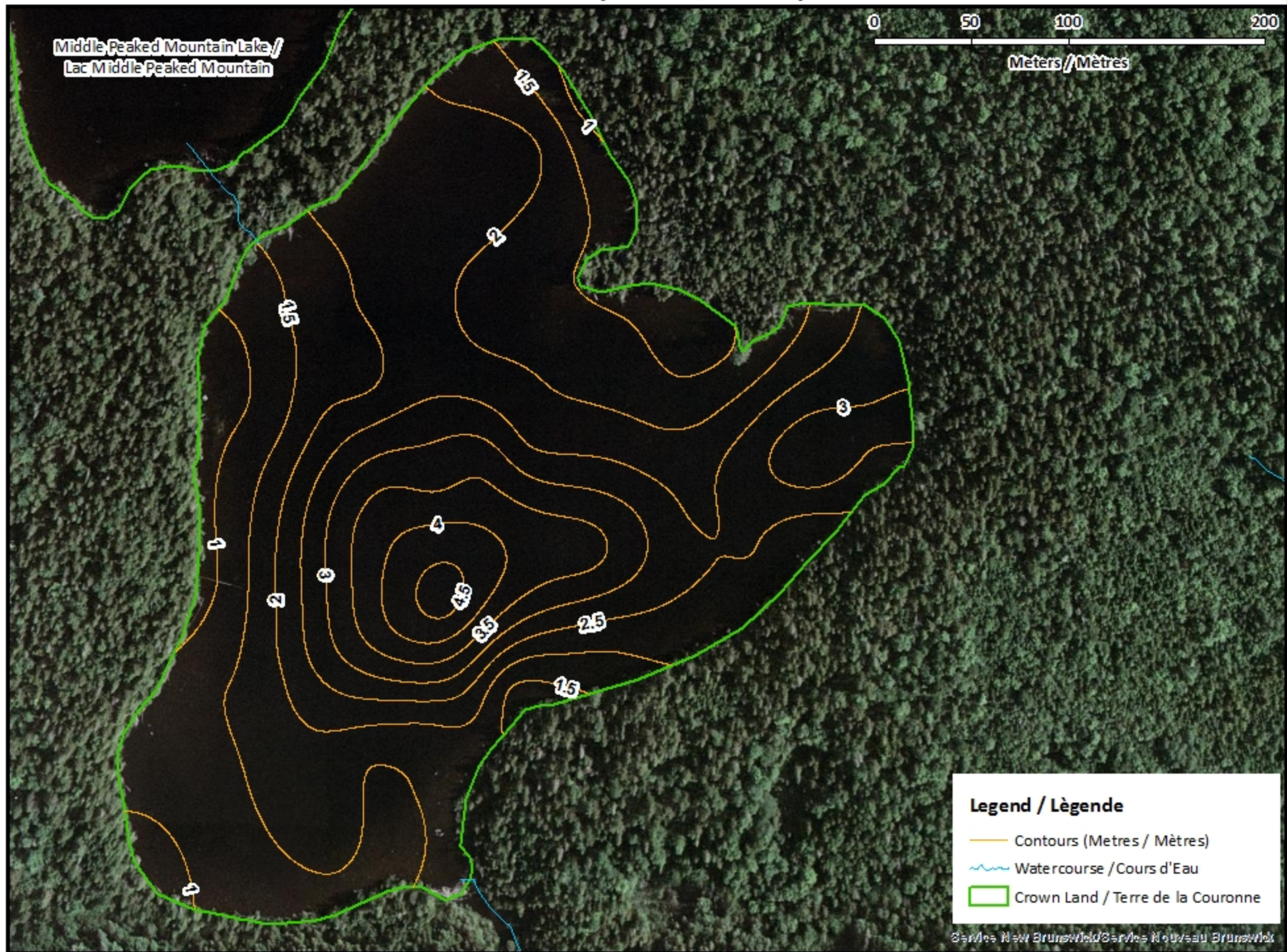


# Lower Peaked Mountain Lake / Lac Lower Peaked Mountain

## Contours (Metres / Mètres)



Middle Peaked Mountain Lake /  
Lac Middle Peaked Mountain



**Legend / Légende**

- Contours (Metres / Mètres)
- Watercourse / Cours d'Eau
- Crown Land / Terre de la Couronne

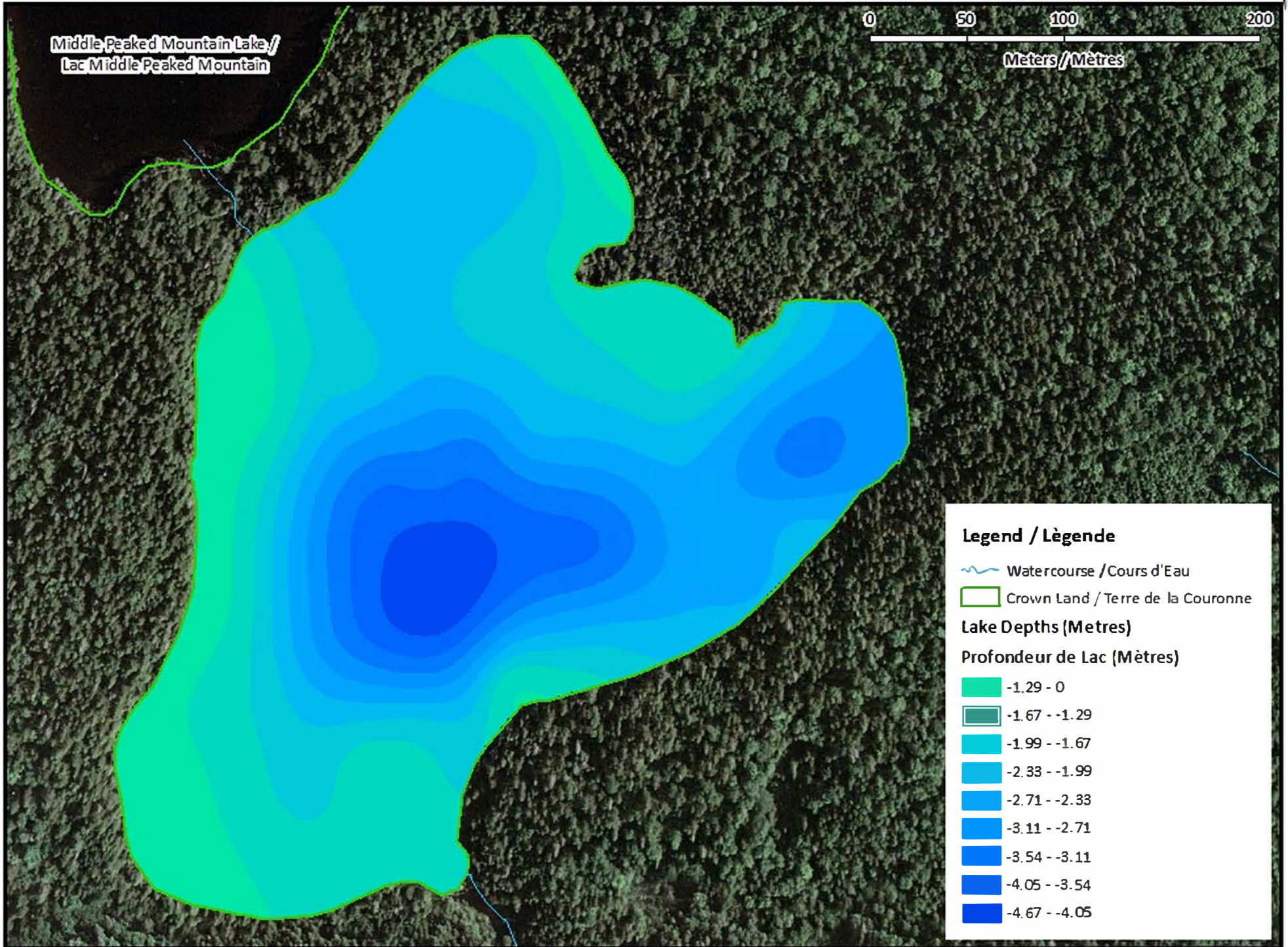


# Lower Peaked Mountain Lake / Lac Lower Peaked Mountain

Depth (Metres) / Profondeur (Mètres)



Middle Peaked Mountain Lake /  
Lac Middle Peaked Mountain



**Legend / Légende**

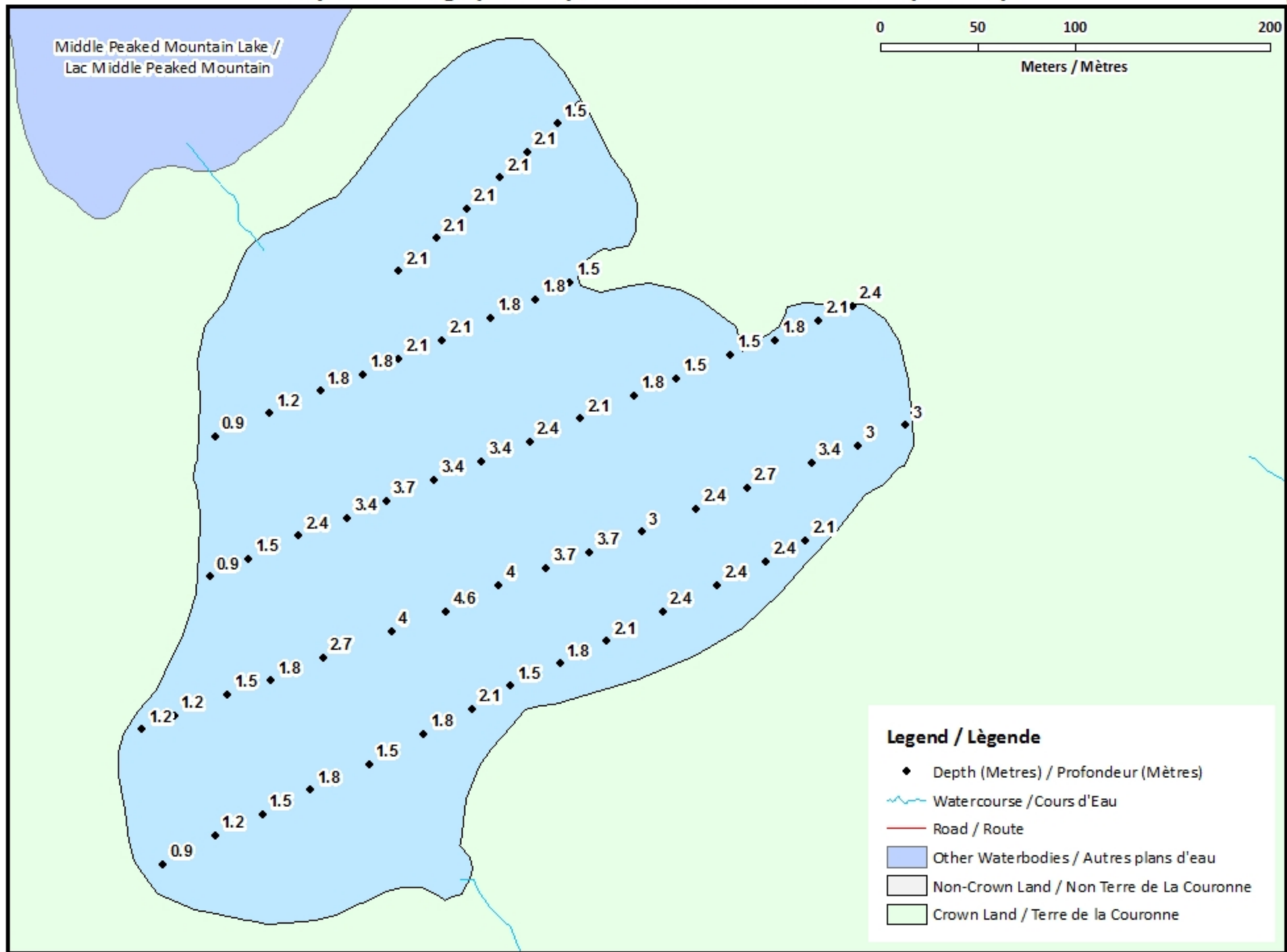
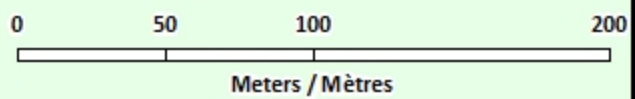
- Watercourse / Cours d'Eau
- Crown Land / Terre de la Couronne

**Lake Depths (Metres)**  
**Profondeur de Lac (Mètres)**

	-1.29 - 0
	-1.67 - -1.29
	-1.99 - -1.67
	-2.33 - -1.99
	-2.71 - -2.33
	-3.11 - -2.71
	-3.54 - -3.11
	-4.05 - -3.54
	-4.67 - -4.05

# Lower Peaked Mountain Lake / Lac Lower Peaked Mountain

## Depth Readings (Metres) / Indications de Profondeur (Mètres)





# Lower Peaked Mountain Lake / Lac Lower Peaked Mountain

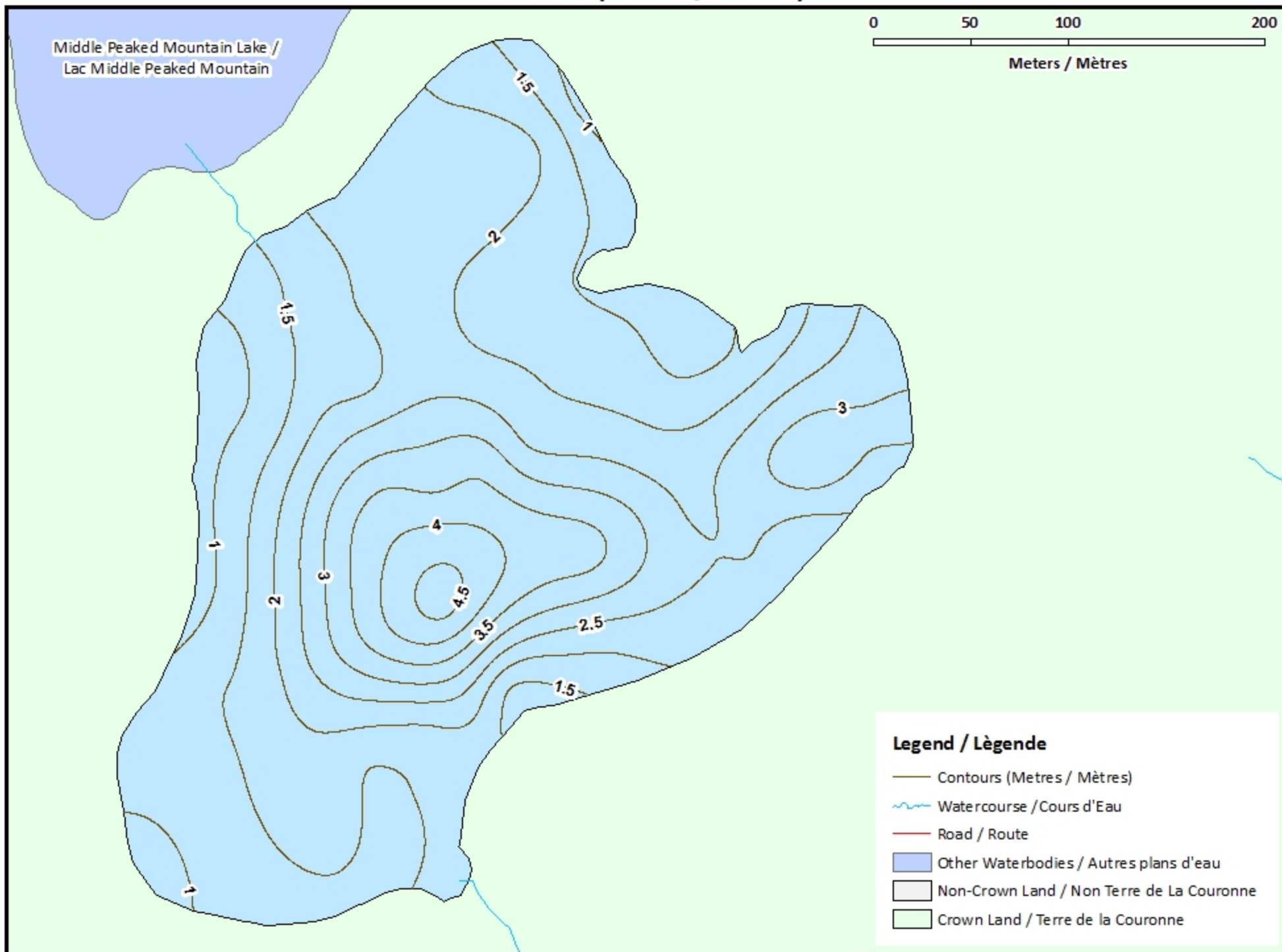
## Contours (Metres / Mètres)



0 50 100 200

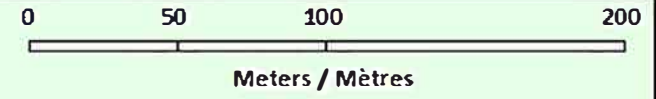
Meters / Mètres

Middle Peaked Mountain Lake /  
Lac Middle Peaked Mountain

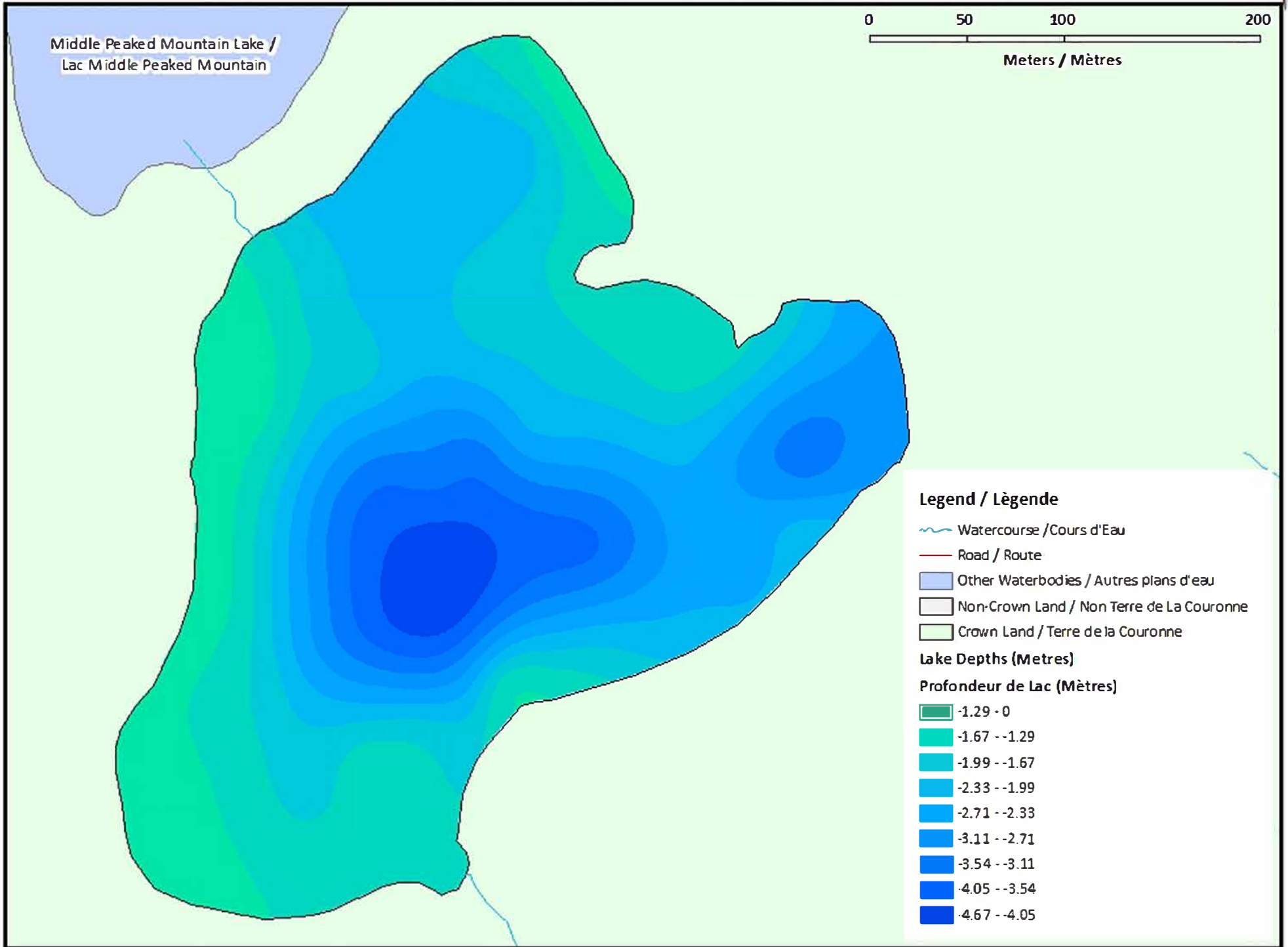


# Lower Peaked Mountain Lake / Lac Lower Peaked Mountain






Depth (Metres) / Profondeur (Mètres)



Middle Peaked Mountain Lake /  
Lac Middle Peaked Mountain












## Legend / Légende

-  Watercourse / Cours d'Eau
-  Road / Route
-  Other Waterbodies / Autres plans d'eau
-  Non-Crown Land / Non Terre de La Couronne
-  Crown Land / Terre de la Couronne

## Lake Depths (Metres)

### Profondeur de Lac (Mètres)

-  -1.29 - 0
-  -1.67 - -1.29
-  -1.99 - -1.67
-  -2.33 - -1.99
-  -2.71 - -2.33
-  -3.11 - -2.71
-  -3.54 - -3.11
-  -4.05 - -3.54
-  -4.67 - -4.05