

Long Lake / Lac Long

Victoria County / Comté de Victoria

*Upper Saint John Recreational Fishing Area /
Zone de Pêche Récréative de Haut Saint-Jean*

47°02'07.7"N 66°54'07.2"W

Long Lake / Lac Long

Note: *The following maps are not designed for navigation purposes. Please exercise caution when using these maps as some shoals may not appear.*

Remarque: *Les cartes suivantes ne sont pas conçues à des fins de navigation. Faites preuve de prudence lors de l'utilisation de ces cartes, car certains hauts-fonds peuvent ne pas apparaître.*

<u>Lake Characteristics</u>	<u>Caractéristiques du lac</u>
Surface Area : 1028.4 hectares / 2541.1 acres Maximum Depth : 27.4 metres / 90 feet	Superficie : 1028.4 hectares / 2541.1 acres Profondeur maximale : 27.4 mètres / 90 pieds

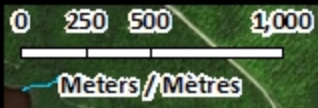
<u>Species Present</u>	<u>Espèce Présente</u>
Sport Fish Brook Trout Lake Trout	Poisson sportif Truite mouchetée (Omble de fontaine) Touladi
Non-Sport Fish Common Shiner Lake Chub Lake Whitefish Longnose Sucker Round Whitefish White Sucker Yellow Perch	Poisson non sportif Méné à nageoires rouges Méné de lac Grand corégone Meunier rouge Ménomini rond Meunier noir Perchaude

This lake is not part of the fish stocking program.

Ce lac ne fait pas partie du programme d'empoissonnement.

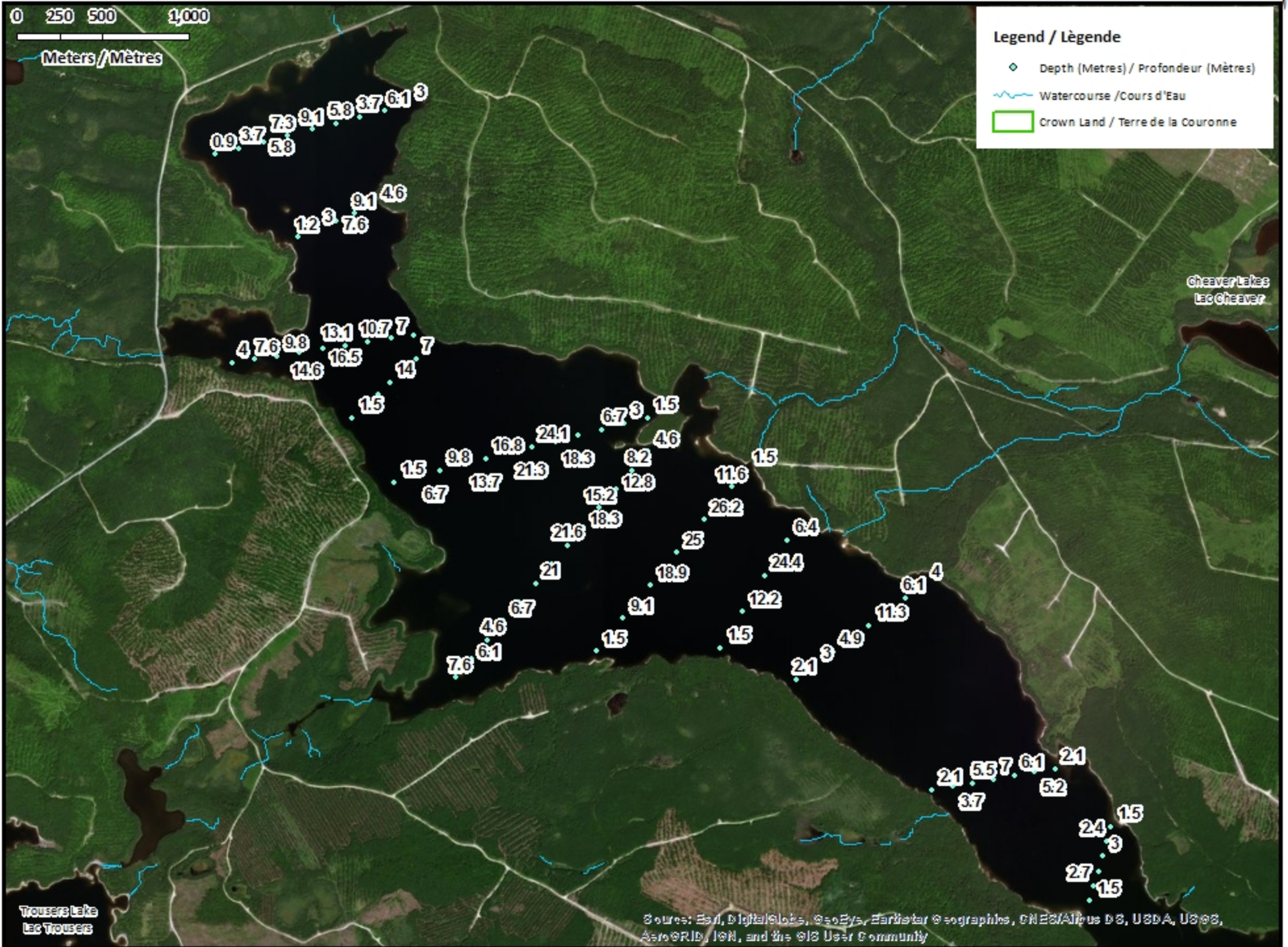
Long Lake / Lac Long

Depth Readings (Metres) / Indications de Profondeur (Mètres)



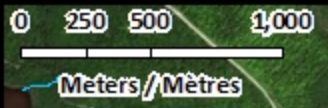
Legend / Légende

- ◆ Depth (Metres) / Profondeur (Mètres)
- ~ Watercourse / Cours d'Eau
- Crown Land / Terre de la Couronne



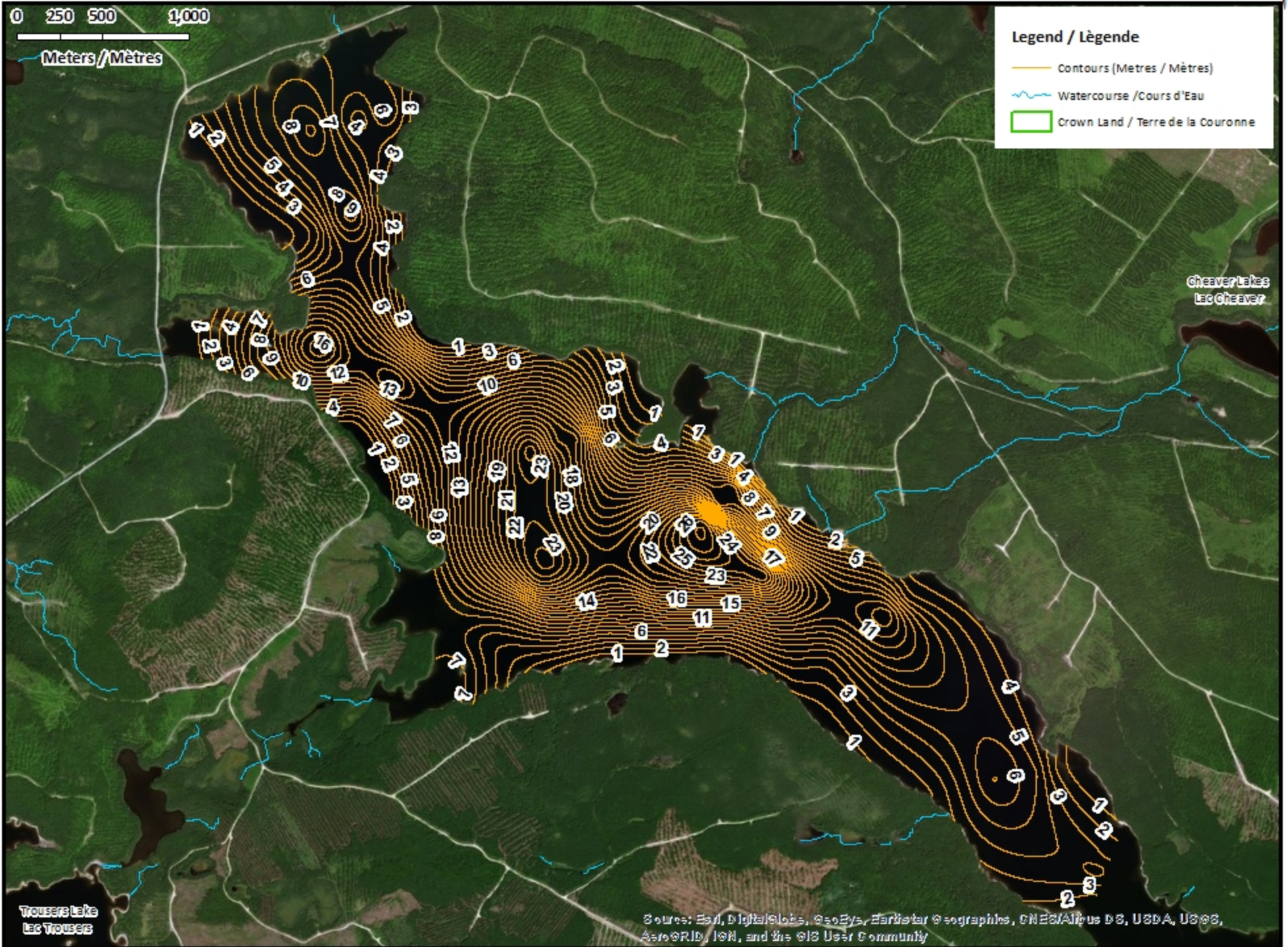
Source: Esri, DigitalGlobe, GeoEye, Earthstar Geographics, CNES/Airbus DS, USDA, USGS, AeroGRID, IGN, and the GIS User Community

Long Lake / Lac Long Contours (Metres / Mètres)



Legend / Légende

- Contours (Metres / Mètres)
- Watercourse / Cours d'Eau
- Crown Land / Terre de la Couronne



Cheever Lakes
Lac Cheever

Trousers Lake
Lac Trousers

Source: Esri, DigitalGlobe, GeoEye, Earthstar Geographics, CNES/Airbus DS, USDA, USGS, AeroGRID, IGN, and the GIS User Community

Long Lake / Lac Long

Depth (Metres) / Profondeur (Mètres)




0 250 500 1,000

Meters / Mètres

Legend / Légende

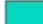
 Watercourse / Cours d'Eau


 Crown Land / Terre de la Couronne


Lake Depths (Metres)

Profondeur de Lac (Mètres)


 -3.09 - 0


 -5.66 - -3.09


 -8.23 - -5.66

 -10.93 - -8.23

 -13.89 - -10.93

 -17.28 - -13.89

 -20.51 - -17.28

 -23.75 - -20.51

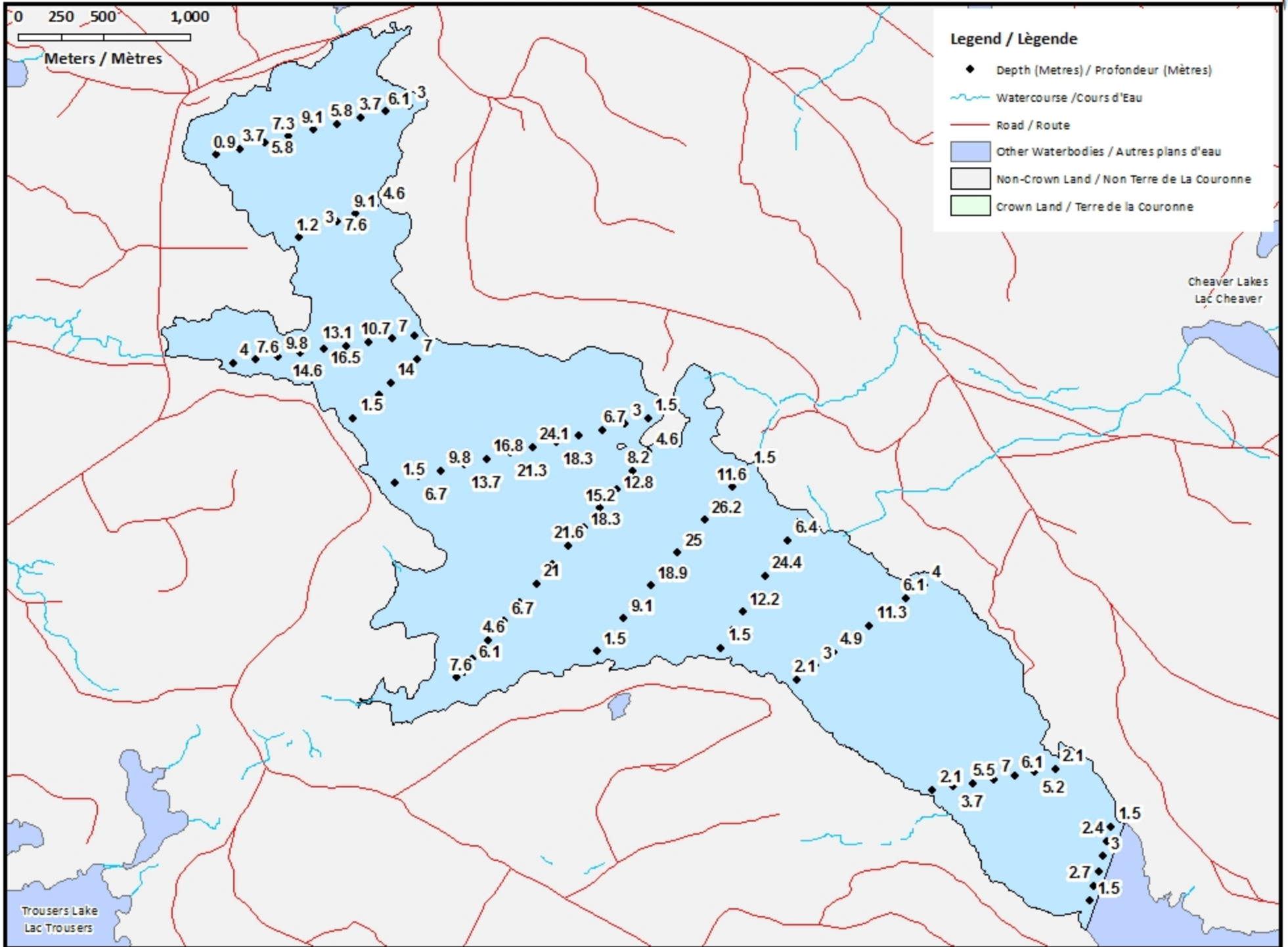
 -27.40 - -23.75

Trousers Lake
Lac Trousers

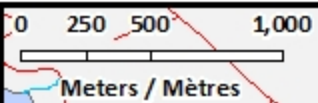
Source: Esri, DigitalGlobe, GeoEye, Earthstar Geographics, CNES/Airbus DS, USDA, USGS, AeroGRID, IGN, and the GIS User Community

Long Lake / Lac Long

Depth Readings (Metres) / Indications de Profondeur (Mètres)

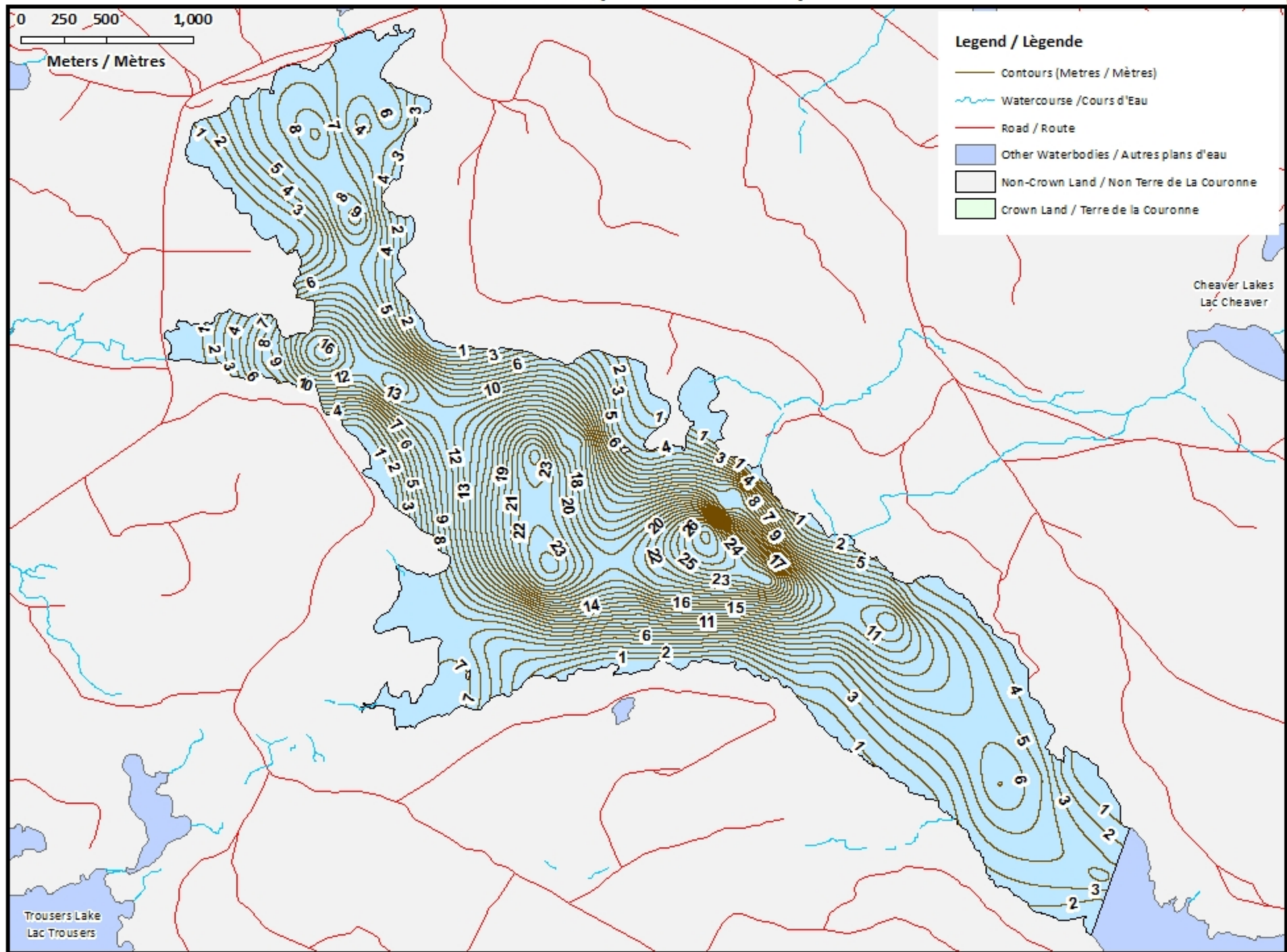


Long Lake / Lac Long Contours (Metres / Mètres)



Legend / Légende

- Contours (Metres / Mètres)
- Watercourse / Cours d'Eau
- Road / Route
- Other Waterbodies / Autres plans d'eau
- Non-Crown Land / Non Terre de La Couronne
- Crown Land / Terre de la Couronne



Long Lake / Lac Long

Depth (Metres) / Profondeur (Mètres)

