

Little Kedron Lake / Lac Little Kedron

York County / Comté de York

*Southwest Recreational Fishing Area /
Zone de Pêche Récréative de Sud-Ouest*

45°31'37.8"N 66°58'14.4"W

Little Kedron Lake/ Lac Little Kedron

Note: *The following maps are not designed for navigation purposes. Please exercise caution when using these maps as some shoals may not appear.*

Remarque: *Les cartes suivantes ne sont pas conçues à des fins de navigation. Faites preuve de prudence lors de l'utilisation de ces cartes, car certains hauts-fonds peuvent ne pas apparaître.*

<u>Lake Characteristics</u>	<u>Caractéristiques du lac</u>
Surface Area : 188.2 hectares / 465.0 acres Maximum Depth : 11.0 metres / 36 feet	Superficie : 188.2 hectares / 465.0 acres Profondeur maximale : 11.0 mètres / 36 pieds

<u>Species Present</u>	<u>Espèce Présente</u>
Sport Fish Brook Trout	Poisson sportif Truite mouchetée (Omble de fontaine)
Non-Sport Fish Brown Bullhead Common Shiner Fallfish Golden Shiner Pearl Dace Pumpkinseed Threespine Stickleback White Sucker Yellow Perch	Poisson non sportif Barbotte brune Méné à nageoires rouges Ouitouche Méné jaune Mulet perlé Crapet-soleil Épinoche à trois épines Meunier noir Perchaude

This lake is not part of the fish stocking program.

Ce lac ne fait pas partie du programme d'empoissonnement.

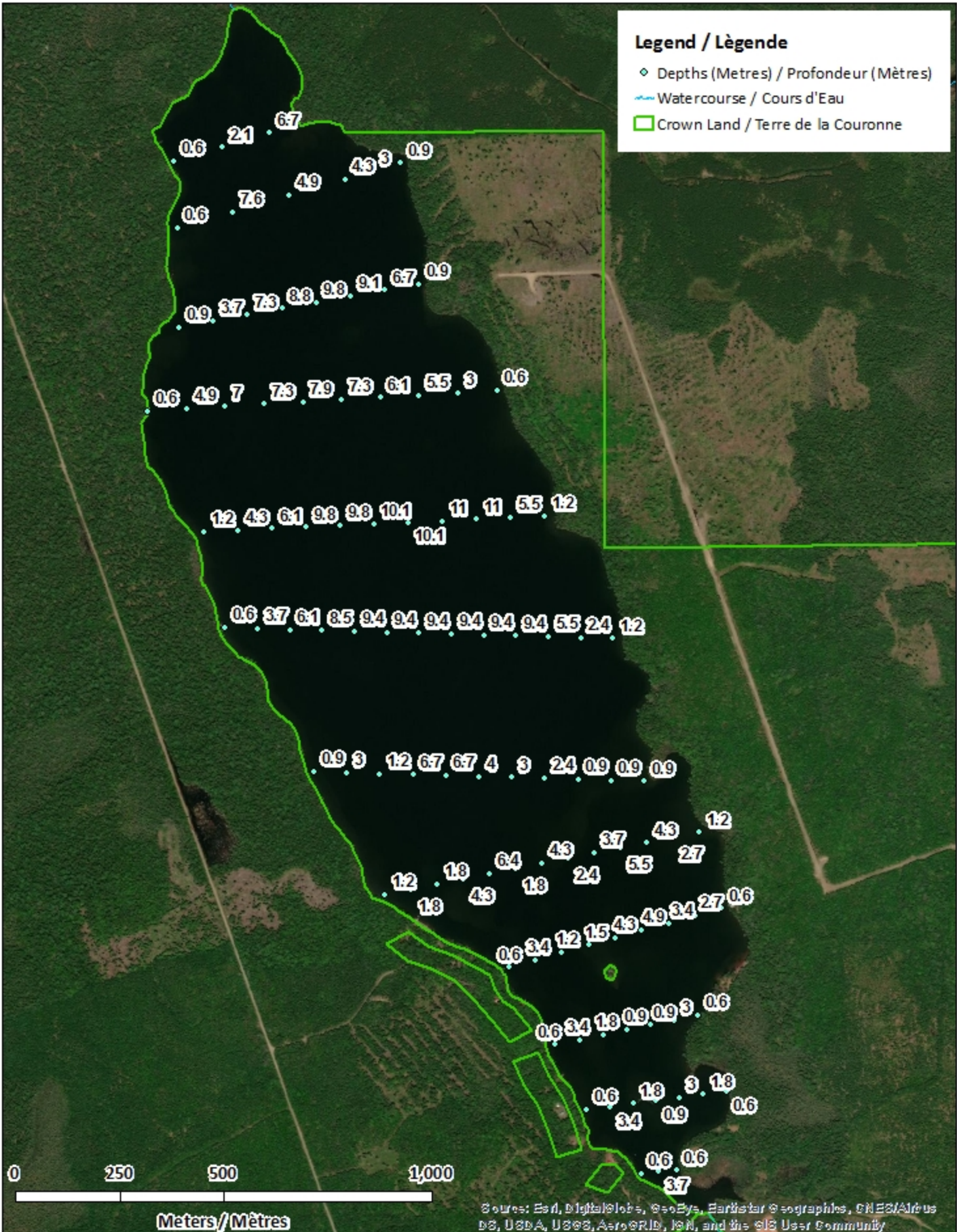
Little Kedron Lake / Lac Little Kedron

Depth Readings (Metres) / Indications de Profondeur (Mètres)



Legend / Légende

- ◆ Depths (Metres) / Profondeur (Mètres)
- Watercourse / Cours d'Eau
- Crown Land / Terre de la Couronne



0.6 2.1 6.7
0.6 7.6 4.9 4.3 3 0.9
0.9 3.7 7.3 8.8 9.8 9.1 6.7 0.9
0.6 4.9 7 7.3 7.9 7.3 6.1 5.5 3 0.6
1.2 4.3 6.1 9.8 9.8 10.1 11 11 5.5 1.2
10.1
0.6 3.7 6.1 8.5 9.4 9.4 9.4 9.4 9.4 5.5 2.4 1.2
0.9 3 1.2 6.7 6.7 4 3 2.4 0.9 0.9 0.9
1.2 1.8 6.4 4.3 3.7 4.3 1.2
1.8 4.3 1.8 2.4 5.5 2.7
0.6 3.4 1.2 1.5 4.3 4.9 3.4 2.7 0.6
0.6 3.4 1.8 0.9 0.9 3 0.6
0.6 1.8 3 1.8 0.6
3.4 0.9 0.6
0.6 0.6
3.7

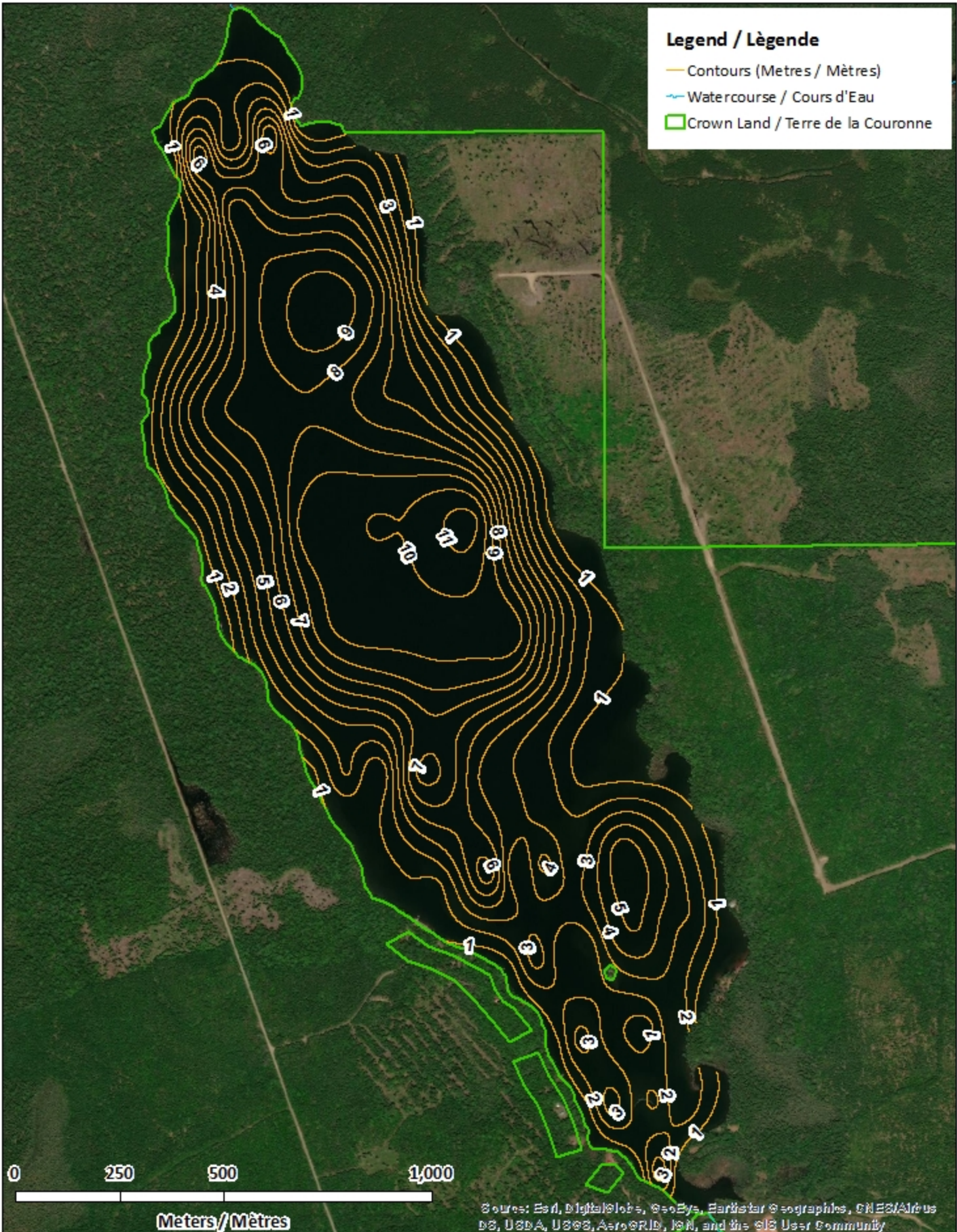
Little Kedron Lake / Lac Little Kedron

Contours (Metres / Mètres)



Legend / Légende

- Contours (Metres / Mètres)
- Watercourse / Cours d'Eau
- Crown Land / Terre de la Couronne

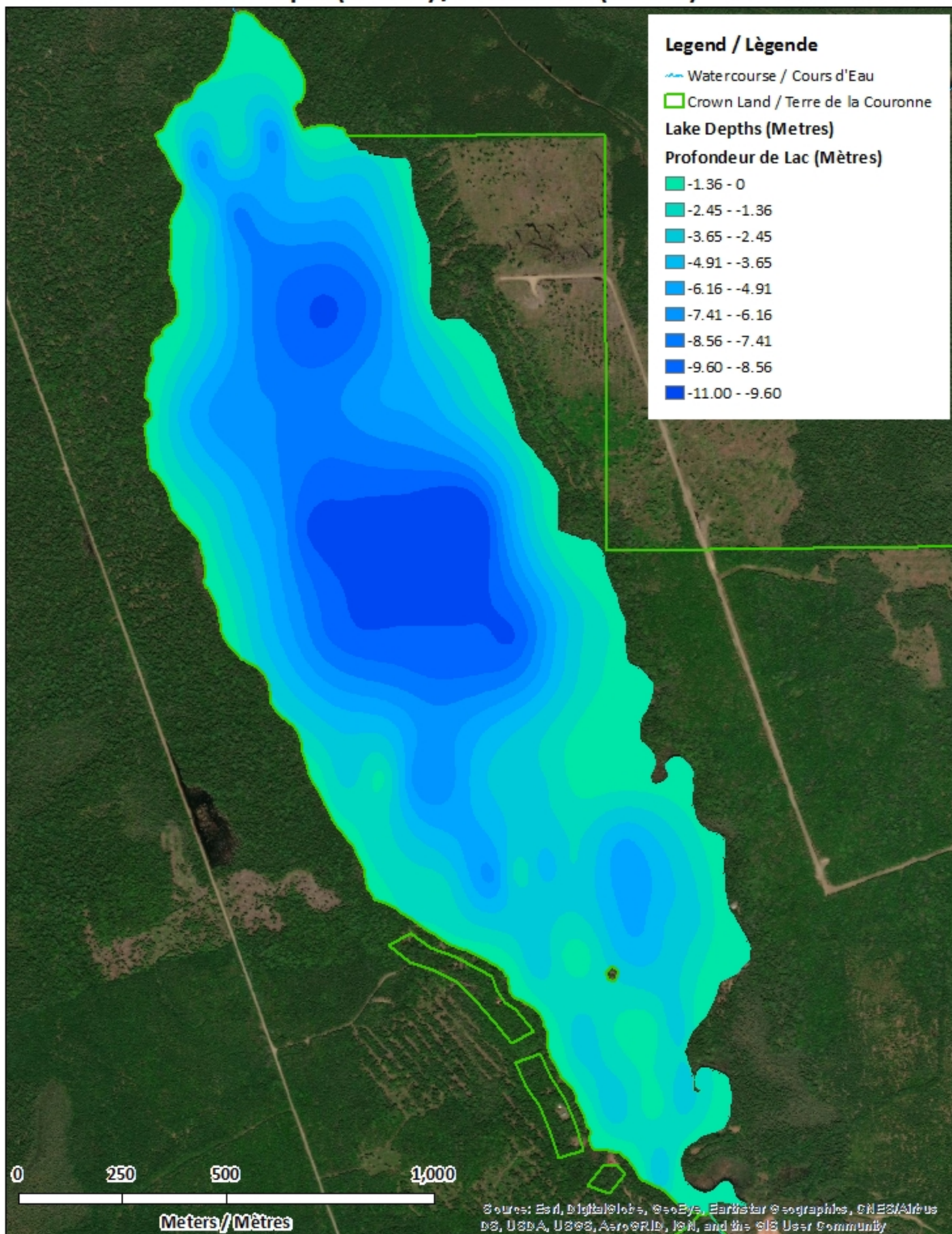


0 250 500 1,000
Meters / Mètres

Source: Esri, DigitalGlobe, GeoEye, Earthstar Geographics, CNES/Airbus DS, USDA, USGS, AeroGRID, IGN, and the GIS User Community

Little Kedron Lake / Lac Little Kedron

Depth (Metres) / Profondeur (Mètres)



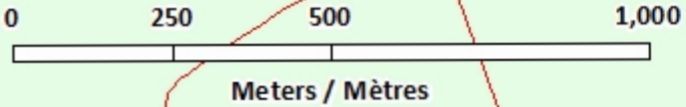
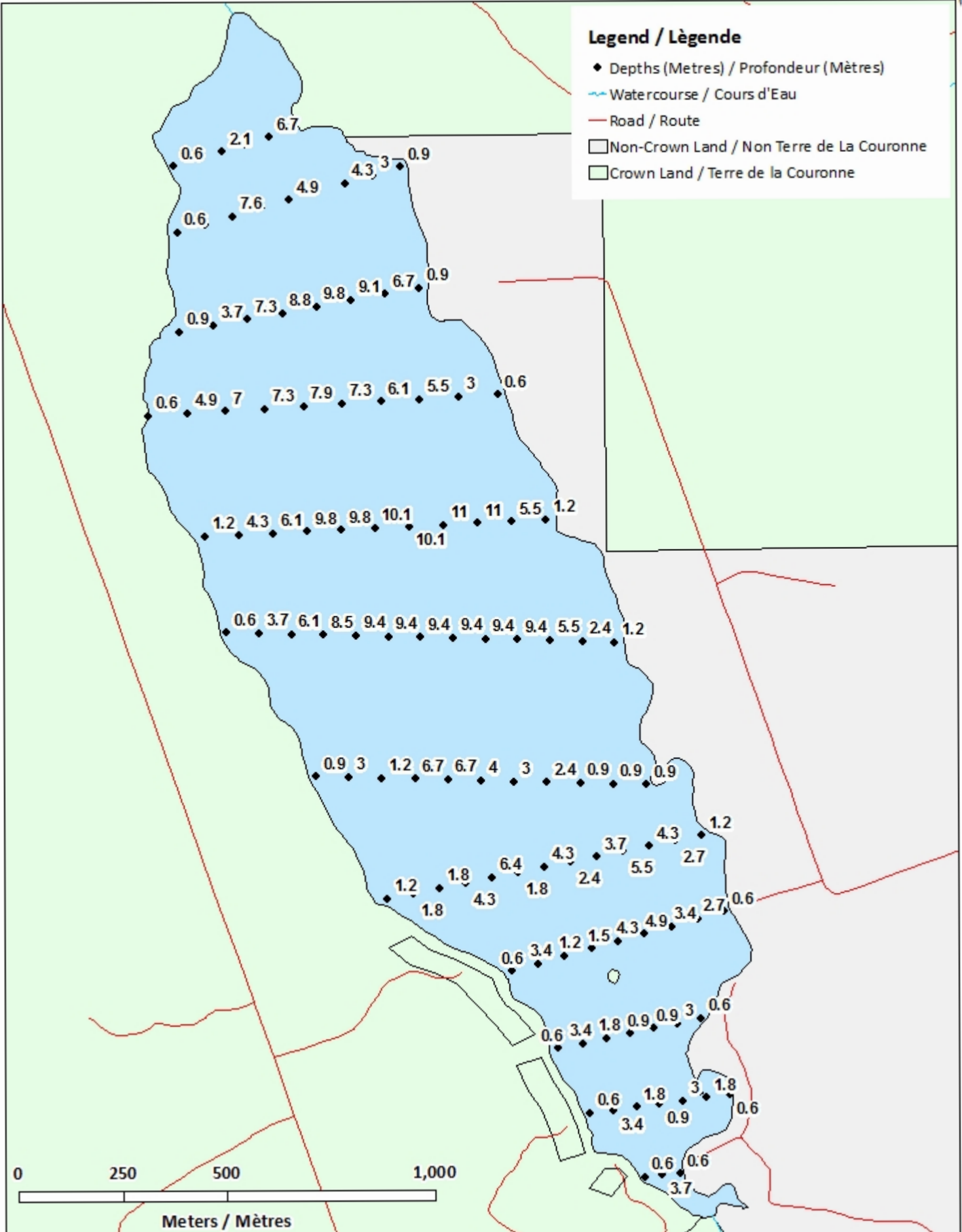
Little Kedron Lake / Lac Little Kedron

Depth Readings (Metres) / Indications de Profondeur (Mètres)



Legend / Légende

- ◆ Depths (Metres) / Profondeur (Mètres)
- ~ Watercourse / Cours d'Eau
- Road / Route
- Non-Crown Land / Non Terre de La Couronne
- Crown Land / Terre de la Couronne



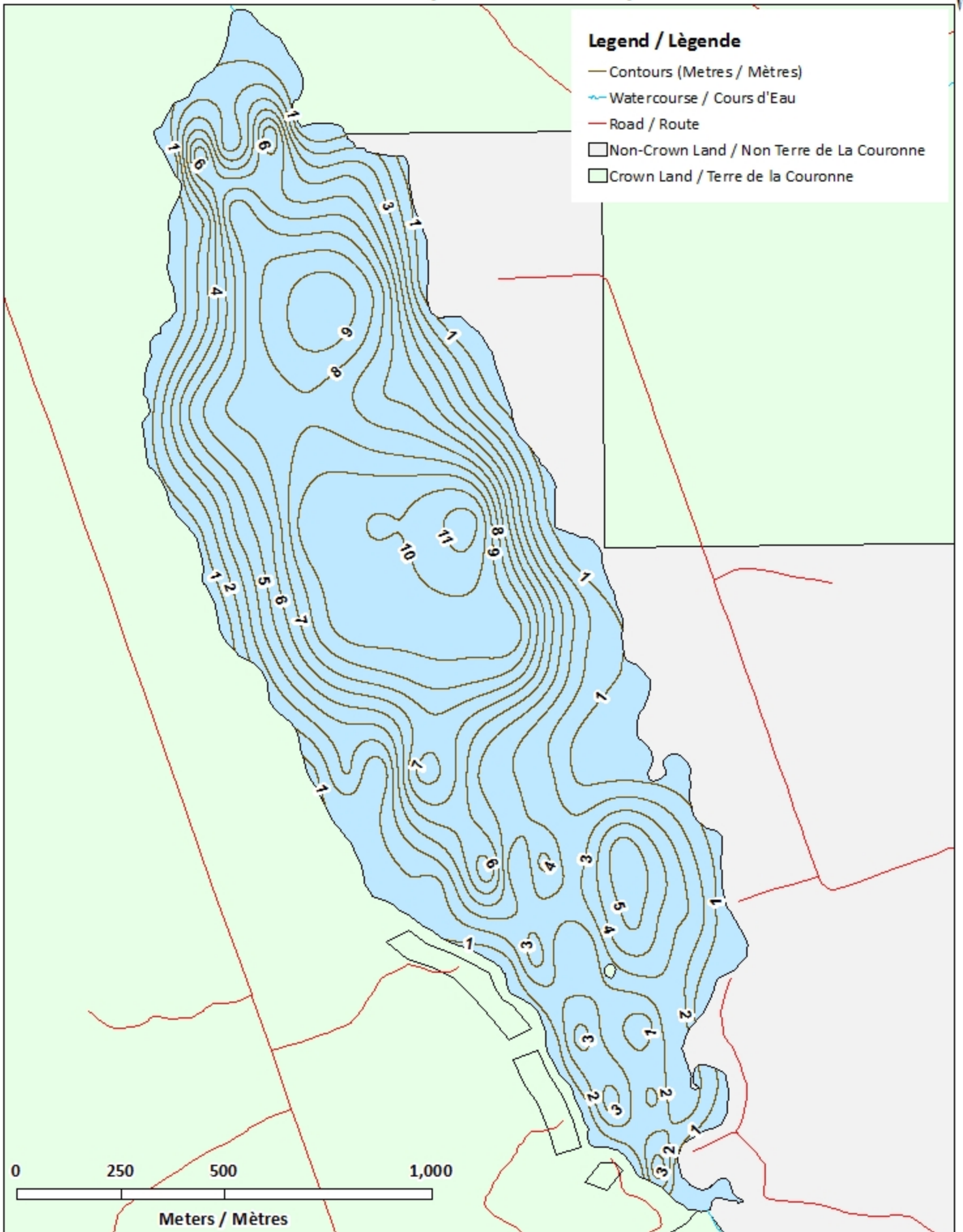
Little Kedron Lake / Lac Little Kedron

Contours (Metres / Mètres)



Legend / Légende

- Contours (Metres / Mètres)
- ~ Watercourse / Cours d'Eau
- Road / Route
- Non-Crown Land / Non Terre de La Couronne
- Crown Land / Terre de la Couronne




0 250 500 1,000
Meters / Mètres


Little Kedron Lake / Lac Little Kedron


Depth (Metres) / Profondeur (Mètres)



Legend / Légende

 Watercourse / Cours d'Eau


 Road / Route


 Non-Crown Land / Non Terre de La Couronne


 Crown Land / Terre de la Couronne


Lake Depths (Metres)


Profondeur de Lac (Mètres)


 -1.36 - 0


 -2.45 - -1.36


 -3.65 - -2.45

 -4.91 - -3.65

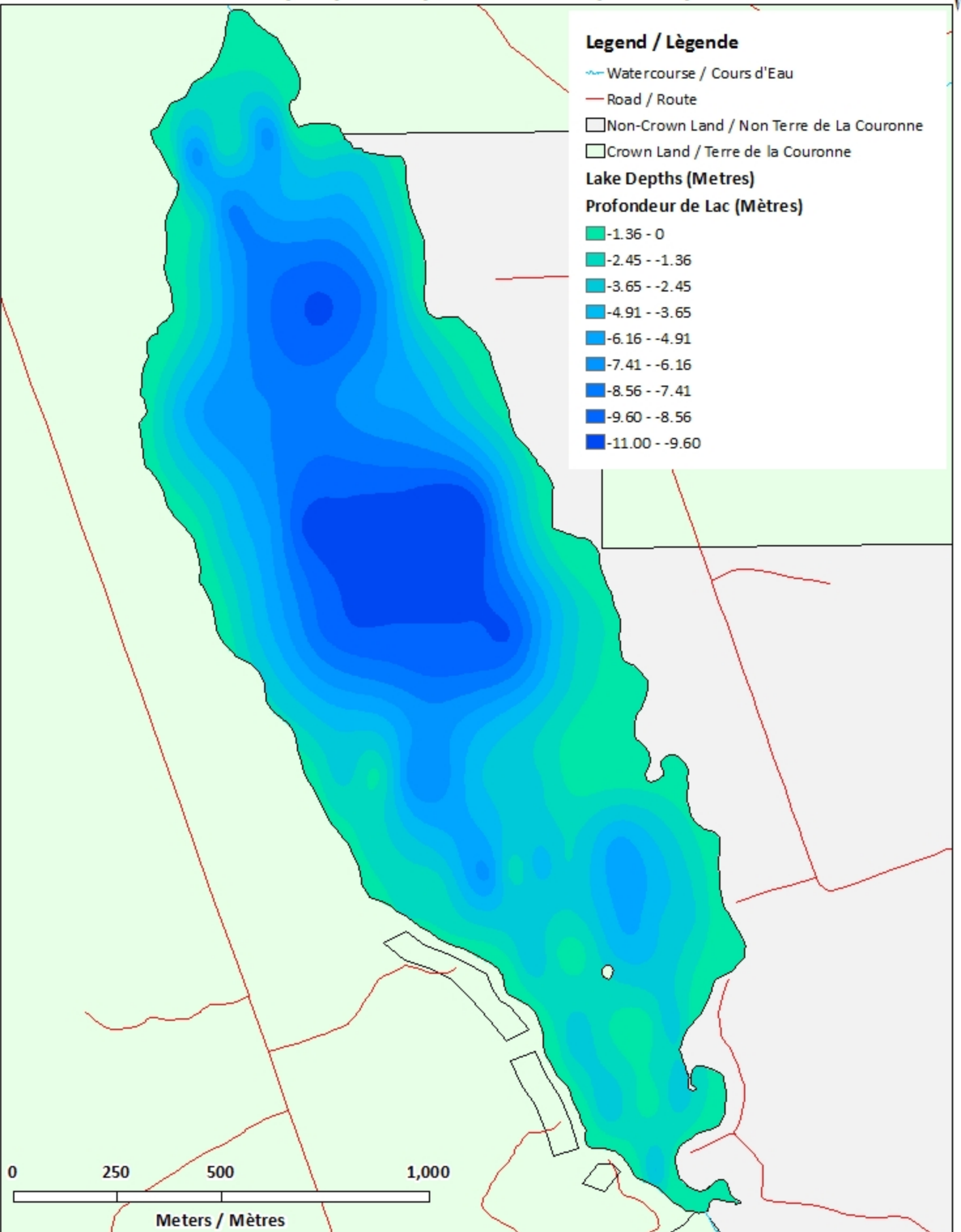
 -6.16 - -4.91

 -7.41 - -6.16

 -8.56 - -7.41

 -9.60 - -8.56

 -11.00 - -9.60



0 250 500 1,000
Meters / Mètres