

Island Lake / Lac Island

Victoria County / Comté de Victoria

*Upper Saint John Recreational Fishing Area /
Zone de Pêche Récréative de Haut Saint-Jean*

46°58'39.1"N 66°50'03.6"W

Island Lake / Lac Island

Note: *The following maps are not designed for navigation purposes. Please exercise caution when using these maps as some shoals may not appear.*

Remarque: *Les cartes suivantes ne sont pas conçues à des fins de navigation. Faites preuve de prudence lors de l'utilisation de ces cartes, car certains hauts-fonds peuvent ne pas apparaître.*

<u>Lake Characteristics</u>	<u>Caractéristiques du lac</u>
Surface Area : 157.9 hectares / 390.2 acres Maximum Depth : 11.0 metres / 36 feet	Superficie : 157.9 hectares / 390.2 acres Profondeur maximale : 11.0 mètres / 36 pieds

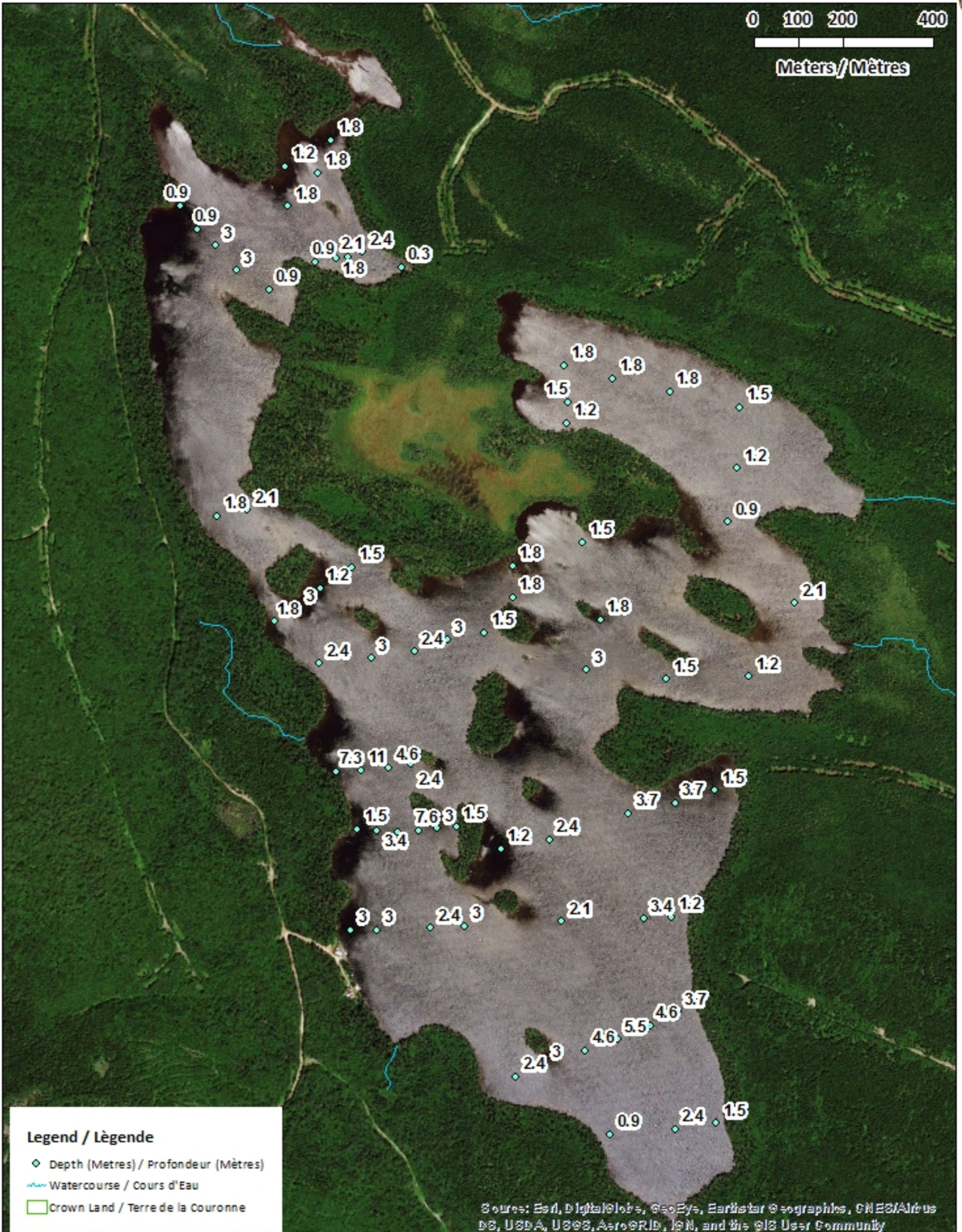
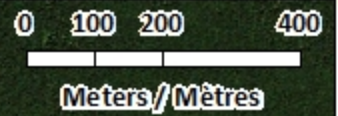
<u>Species Present</u>	<u>Espèce Présente</u>
Sport Fish Brook Trout	Poisson sportif Truite mouchetée (Ombles de fontaine)
Non-Sport Fish	Poisson non sportif

This lake is not part of the fish stocking program.

Ce lac ne fait pas partie du programme d'empoissonnement.

Island Lake / Lac Island

Depth Readings (Metres) / Indications de Profondeur (Mètres)



Legend / Légende

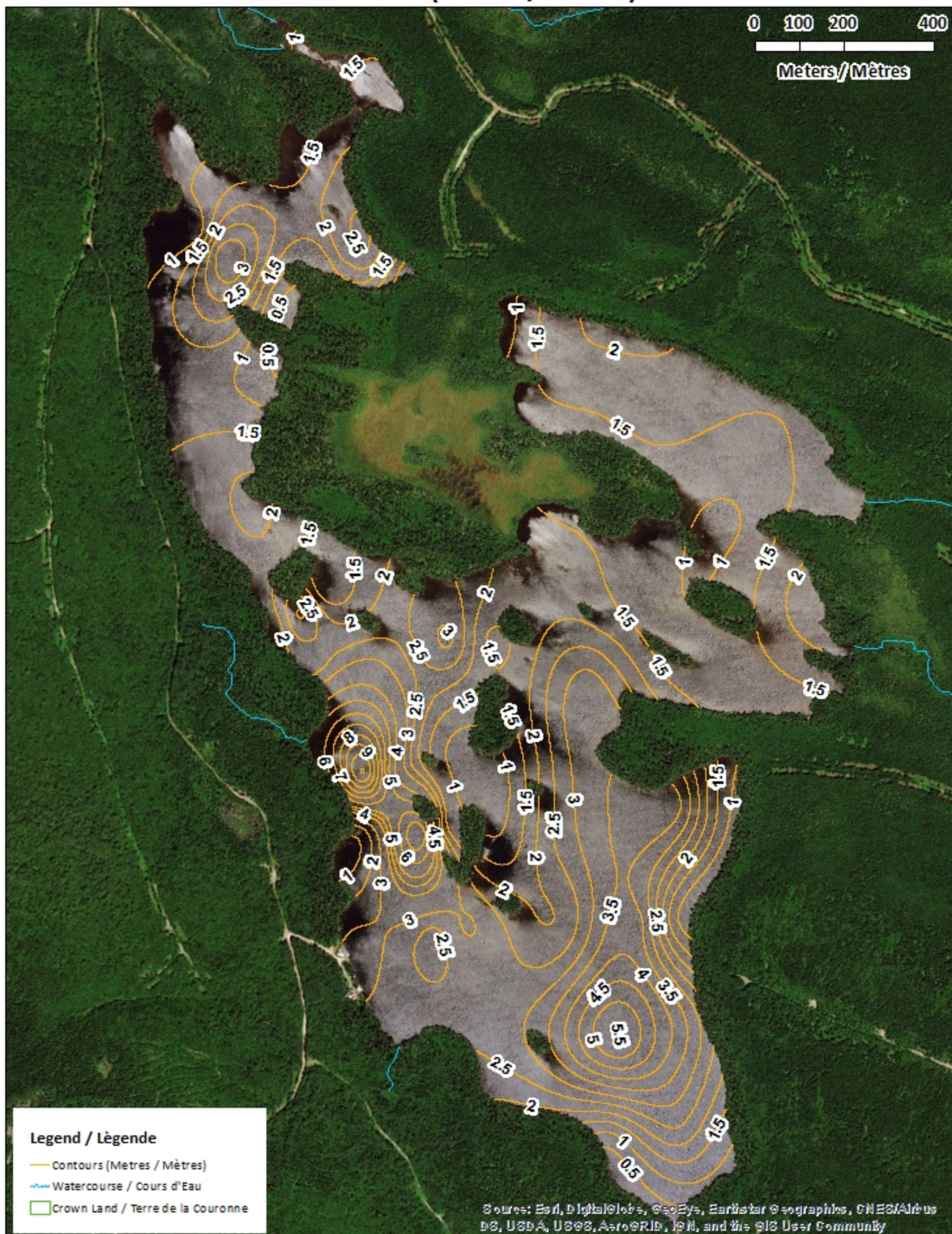
- ◆ Depth (Metres) / Profondeur (Mètres)
- ~ Watercourse / Cours d'Eau
- Crown Land / Terre de la Couronne

Source: Esri, DigitalGlobe, GeoEye, Earthstar Geographics, CNES/Airbus DS, USDA, USGS, AeroGRID, IGN, and the GIS User Community

Island Lake / Lac Island Contours (Metres / Mètres)



0 100 200 400
Meters / Mètres

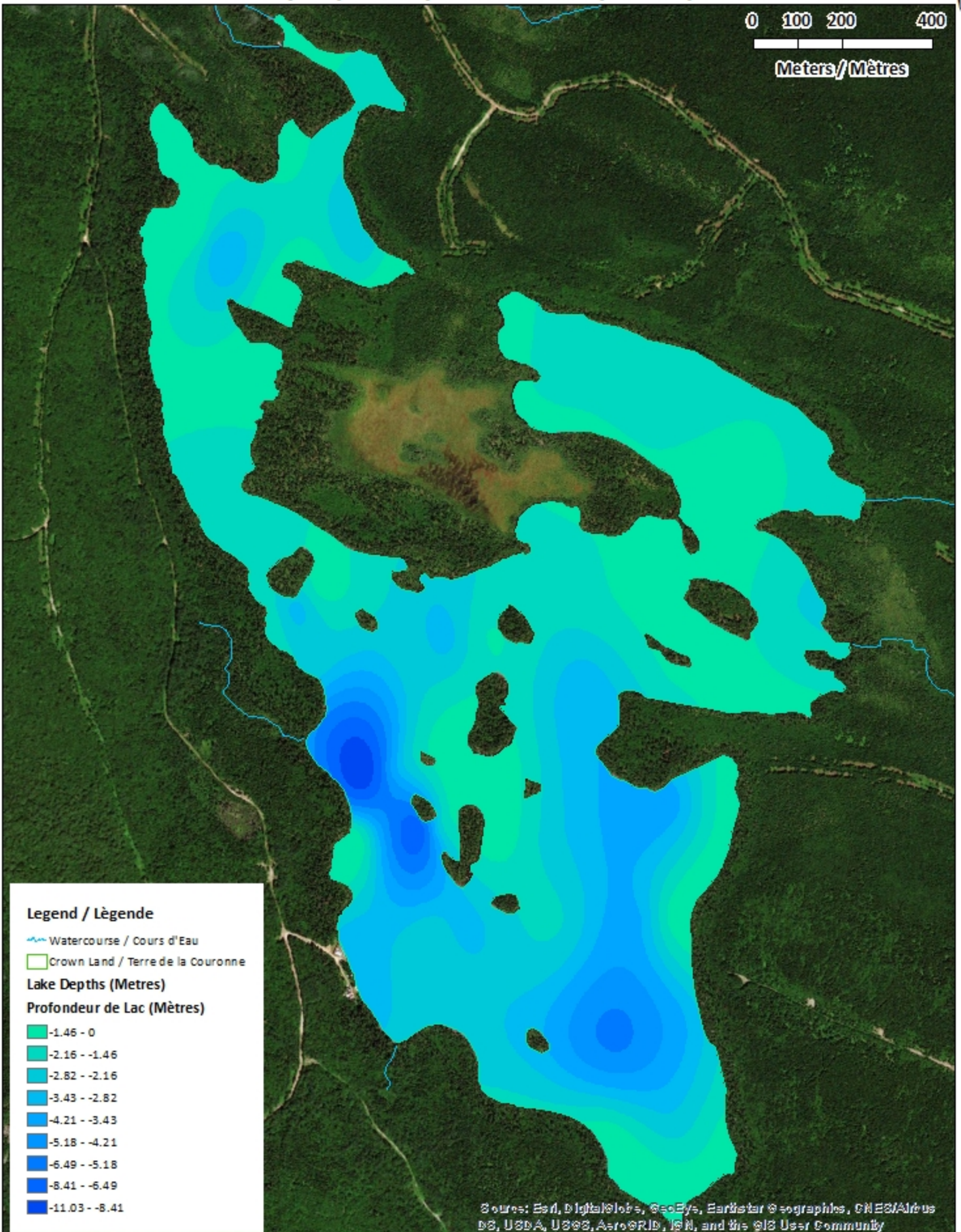


Island Lake / Lac Island

Depth (Metres) / Profondeur (Mètres)



0 100 200 400
Meters / Mètres












Legend / Légende

-  Watercourse / Cours d'Eau
-  Crown Land / Terre de la Couronne

Lake Depths (Metres)

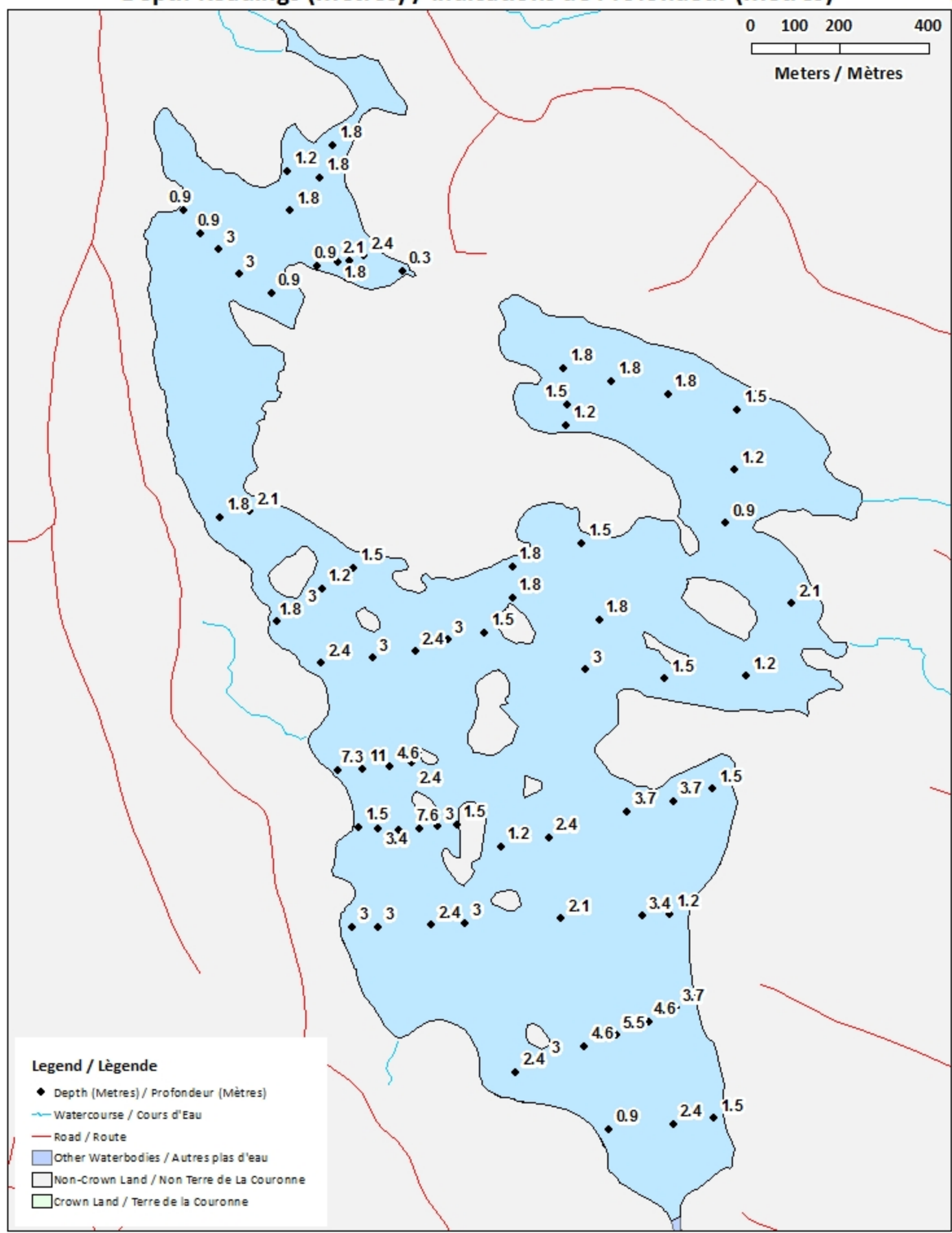
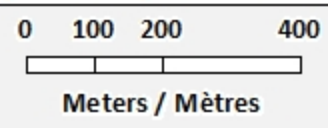
Profondeur de Lac (Mètres)

-  -1.46 - 0
-  -2.16 - -1.46
-  -2.82 - -2.16
-  -3.43 - -2.82
-  -4.21 - -3.43
-  -5.18 - -4.21
-  -6.49 - -5.18
-  -8.41 - -6.49
-  -11.03 - -8.41

Sources: Esri, DigitalGlobe, GeoEye, Earthstar Geographics, CNES/Airbus DS, USDA, USGS, AeroGRID, IGN, and the GIS User Community

Island Lake / Lac Island

Depth Readings (Metres) / Indications de Profondeur (Mètres)



- Legend / Légende**
- ◆ Depth (Metres) / Profondeur (Mètres)
 - Watercourse / Cours d'Eau
 - Road / Route
 - Other Waterbodies / Autres plans d'eau
 - Non-Crown Land / Non Terre de La Couronne
 - Crown Land / Terre de la Couronne

0.9 0.9 3 3 0.9 2.1 2.4 0.3
1.2 1.8 1.8 1.8 1.8 1.8

1.8 1.8 1.8 1.5
1.5 1.2 1.8 1.5
1.2 0.9

1.8 2.1 1.5 1.8 1.5
1.2 3 1.8 1.8 2.1
1.8 3 2.4 3 1.5 1.8 1.2
2.4 3 2.4 3 3 1.5 1.2

7.3 11 4.6 2.4 1.5 7.6 3 1.5 3.7 3.7 1.5
3.4 1.2 2.4 3.4 1.2

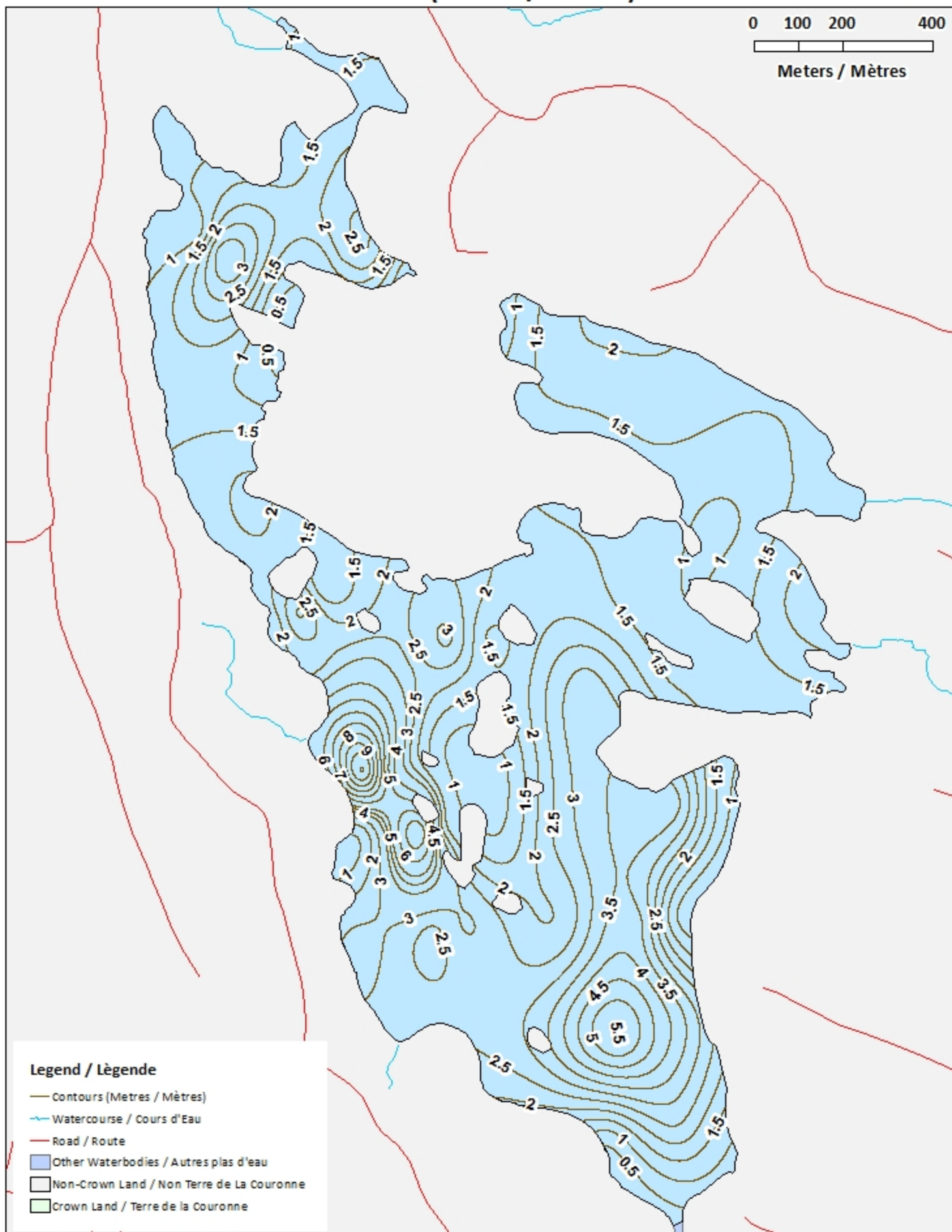
3 3 2.4 3 2.1 3.4 1.2
2.4 3 4.6 5.5 4.6 3.7
0.9 2.4 1.5

Island Lake / Lac Island

Contours (Metres / Mètres)



0 100 200 400
Meters / Mètres



Island Lake / Lac Island

Depth (Metres) / Profondeur (Mètres)



0 100 200 400
Meters / Mètres

