

## Hurd Lake / Lac Hurd

*Charlotte County / Comté de Charlotte*

*Southwest Recreational Fishing Area /  
Zone de Pêche Récréative de Sud-Ouest*

*45°15'54.1"N 66°32'00.0"W*

## Hurd Lake / Lac Hurd

**Note:** *The following maps are not designed for navigation purposes. Please exercise caution when using these maps as some shoals may not appear.*

**Remarque:** *Les cartes suivantes ne sont pas conçues à des fins de navigation. Faites preuve de prudence lors de l'utilisation de ces cartes, car certains hauts-fonds peuvent ne pas apparaître.*

<u>Lake Characteristics</u>	<u>Caractéristiques du lac</u>
Surface Area : 48.9 hectares / 120.9 acres Maximum Depth : 6.7 metres / 22 feet	Superficie : 48.9 hectares / 120.9 acres Profondeur maximale : 6.7 mètres / 22 pieds

<u>Species Present</u>	<u>Espèce Présente</u>
<b>Sport Fish</b> Brook Trout	<b>Poisson sportif</b> Truite mouchetée (Omble de fontaine)
<b>Non-Sport Fish</b> American Eel Brown Bullhead Creek Chub Lake Chub White Sucker	<b>Poisson non sportif</b> Anguille d'Amérique Barbotte brune Mulet à cornes Méné de lac Meunier noir

This lake is not part of the fish stocking program.

Ce lac ne fait pas partie du programme d'empoissonnement.



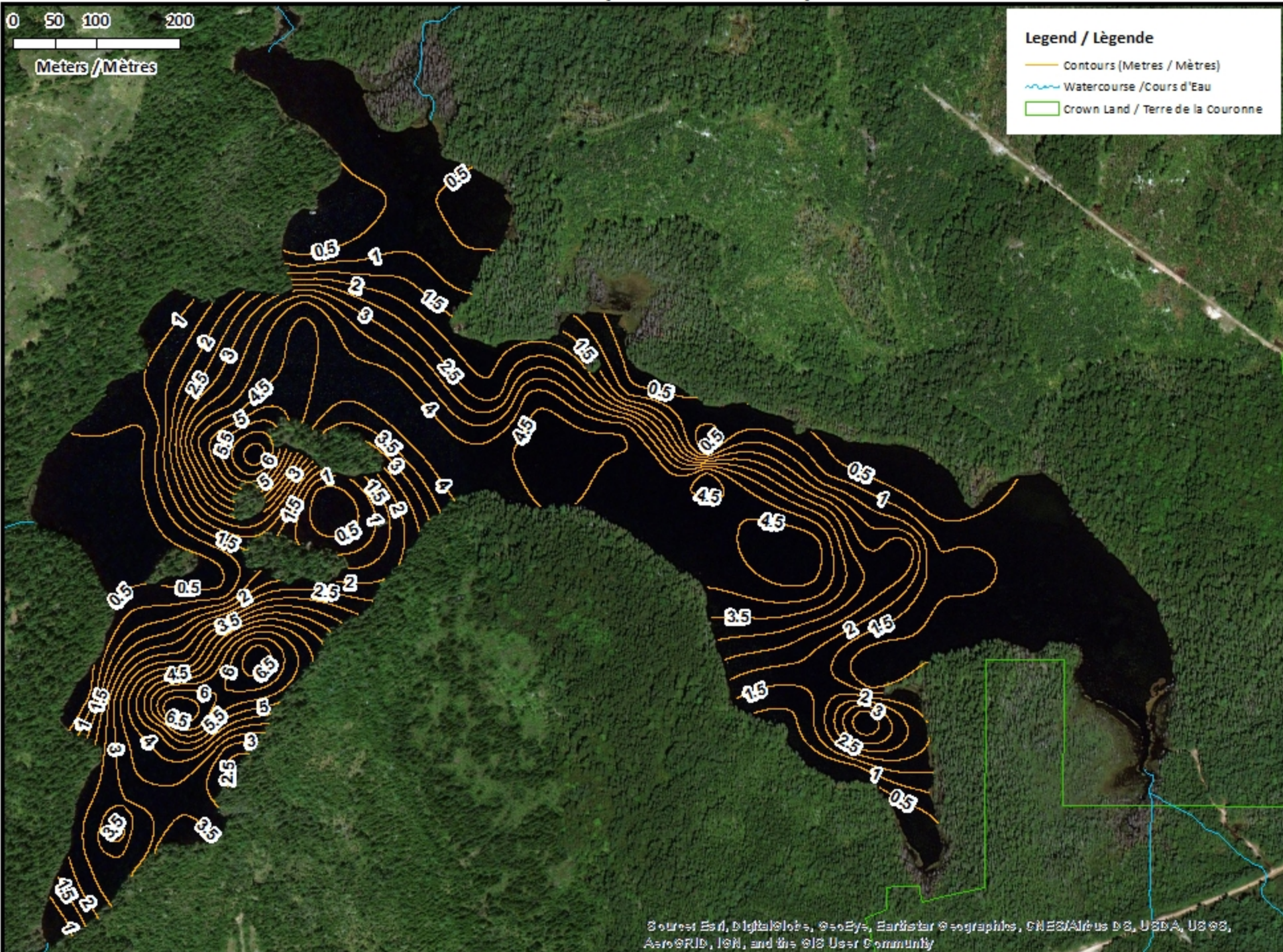
# Hurd Lake / Lac Hurd Contours (Metres / Mètres)



0 50 100 200  
Meters / Mètres

**Legend / Légende**

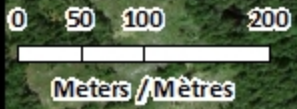
- Contours (Metres / Mètres)
- Watercourse / Cours d'Eau
- Crown Land / Terre de la Couronne



Source: Esri, DigitalGlobe, GeoEye, Earthstar Geographics, CNES/Airbus DS, USDA, USGS, AeroGRID, IGN, and the GIS User Community

# Hurd Lake / Lac Hurd

## Depth (Metres) / Profondeur (Mètres)

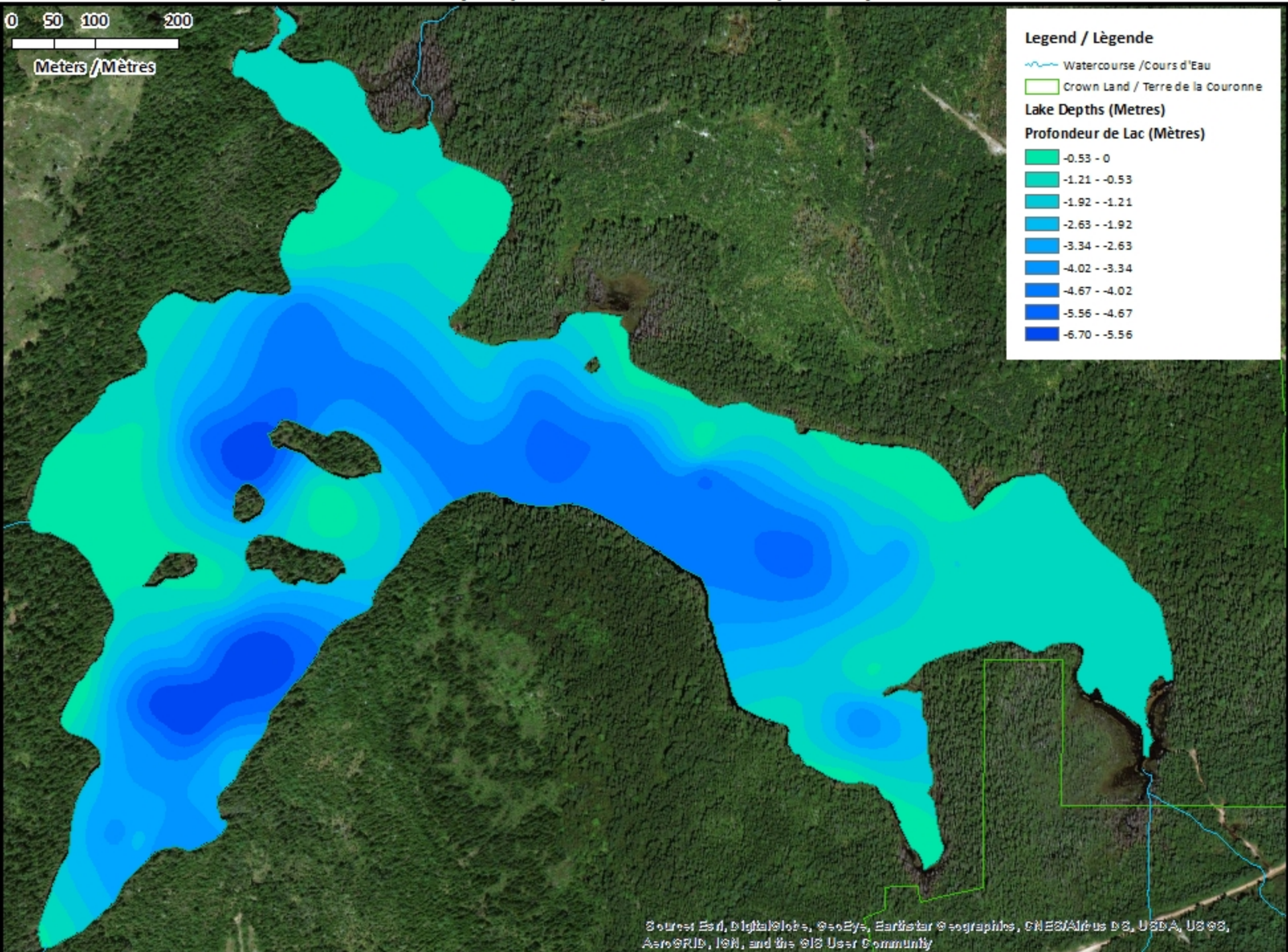


**Legend / Légende**

- Watercourse / Cours d'Eau
- Crown Land / Terre de la Couronne

**Lake Depths (Metres)**  
**Profondeur de Lac (Mètres)**

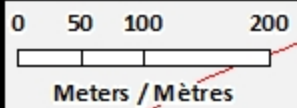
	-0.53 - 0
	-1.21 - -0.53
	-1.92 - -1.21
	-2.63 - -1.92
	-3.34 - -2.63
	-4.02 - -3.34
	-4.67 - -4.02
	-5.56 - -4.67
	-6.70 - -5.56



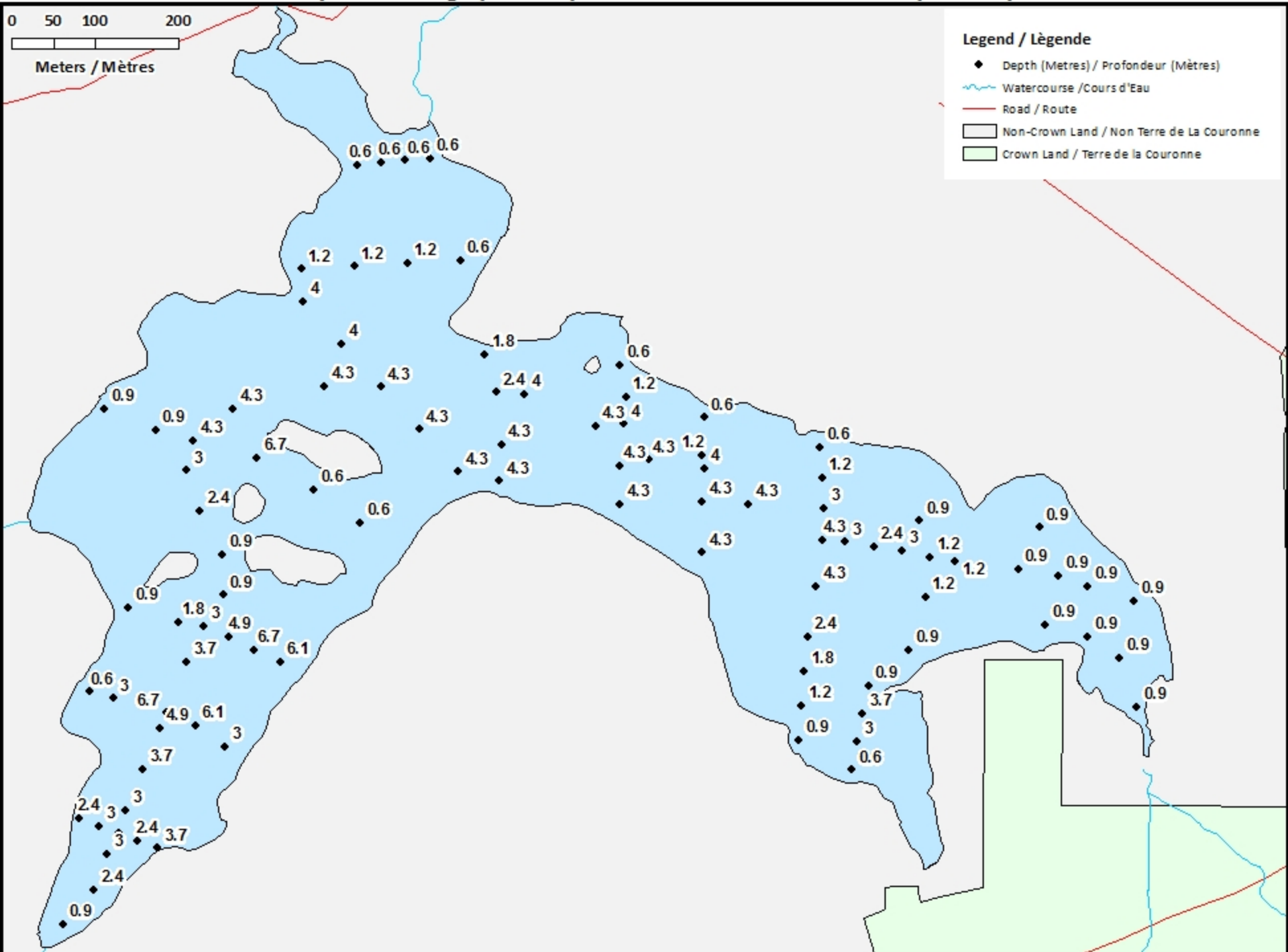
Source: Esri, DigitalGlobe, GeoEye, Earthstar Geographics, CNES/Airbus DS, USDA, USGS, AeroGRID, IGN, and the GIS User Community

# Hurd Lake / Lac Hurd

## Depth Readings (Metres) / Indications de Profondeur (Mètres)

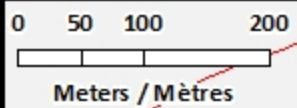


- Legend / Légende**
- ◆ Depth (Metres) / Profondeur (Mètres)
  - ~ Watercourse / Cours d'Eau
  - Road / Route
  - Non-Crown Land / Non Terre de La Couronne
  - Crown Land / Terre de la Couronne



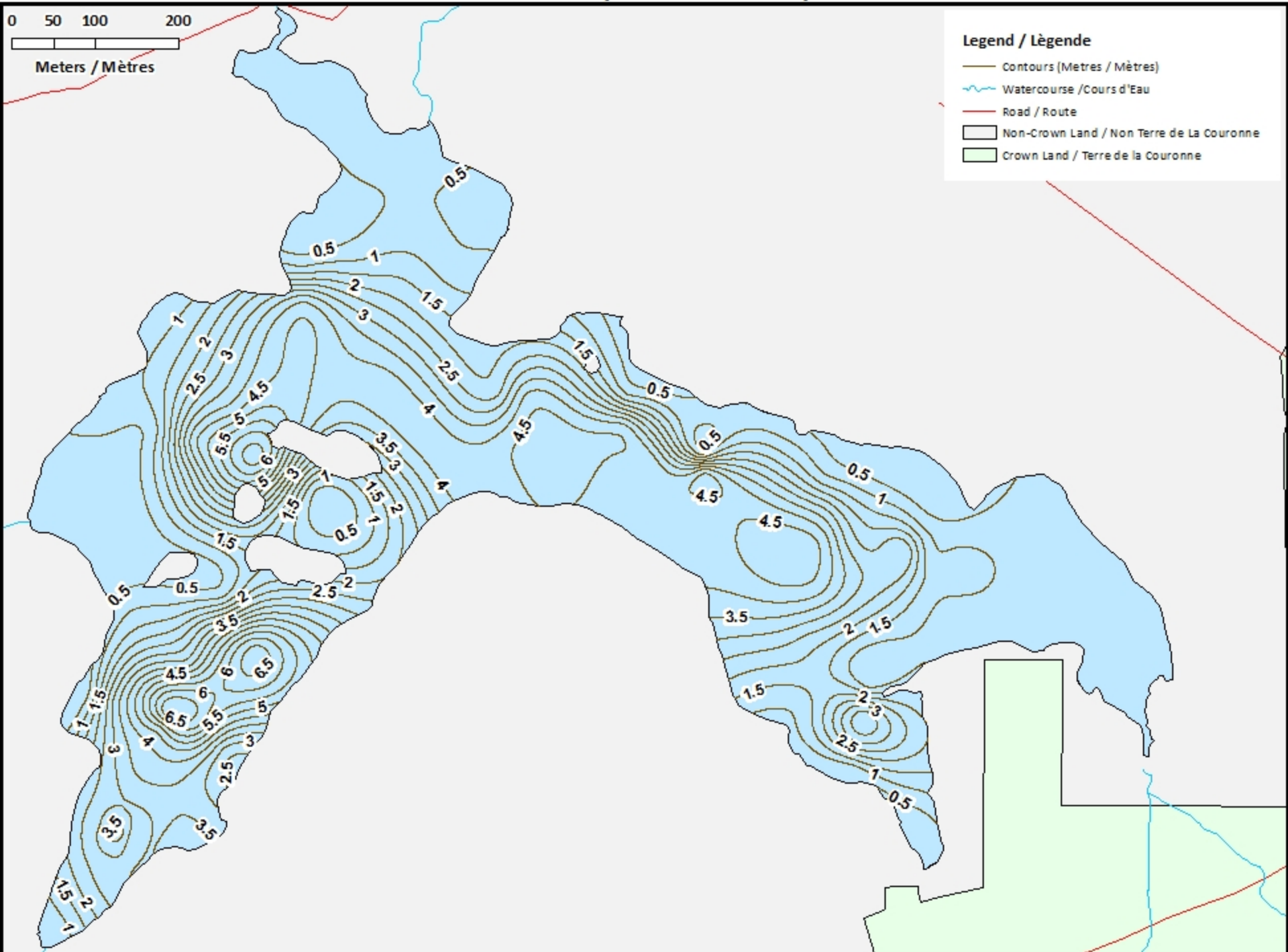
# Hurd Lake / Lac Hurd

## Contours (Metres / Mètres)



### Legend / Légende

- Contours (Metres / Mètres)
- Watercourse / Cours d'Eau
- Road / Route
- Non-Crown Land / Non Terre de La Couronne
- Crown Land / Terre de la Couronne







# Hurd Lake / Lac Hurd

## Depth (Metres) / Profondeur (Mètres)






0 50 100 200  
Meters / Mètres

### Legend / Légende

-  Watercourse / Cours d'Eau
-  Road / Route
-  Non-Crown Land / Non Terre de La Couronne
-  Crown Land / Terre de la Couronne

### Lake Depths (Metres)

#### Profondeur de Lac (Mètres)

-  -0.53 - 0
-  -1.21 - -0.53
-  -1.92 - -1.21
-  -2.63 - -1.92
-  -3.34 - -2.63
-  -4.02 - -3.34
-  -4.67 - -4.02
-  -5.56 - -4.67
-  -6.70 - -5.56

