

## East Long Lake / Lac East Long

*Charlotte County / Comté de Charlotte*

*Southwest Recreational Fishing Area /  
Zone de Pêche Récréative de Sud-Ouest*

45°23'18.9"N 66°31'58.5"W

## East Long Lake / Lac East Long

**Note:** *The following maps are not designed for navigation purposes. Please exercise caution when using these maps as some shoals may not appear.*

**Remarque:** *Les cartes suivantes ne sont pas conçues à des fins de navigation. Faites preuve de prudence lors de l'utilisation de ces cartes, car certains hauts-fonds peuvent ne pas apparaître.*

<u>Lake Characteristics</u>	<u>Caractéristiques du lac</u>
Surface Area : 98.8 hectares / 244.1 acres Maximum Depth : 17.1 metres / 56 feet	Superficie : 98.8 hectares / 244.1 acres Profondeur maximale: 17.1 mètres / 56 pieds

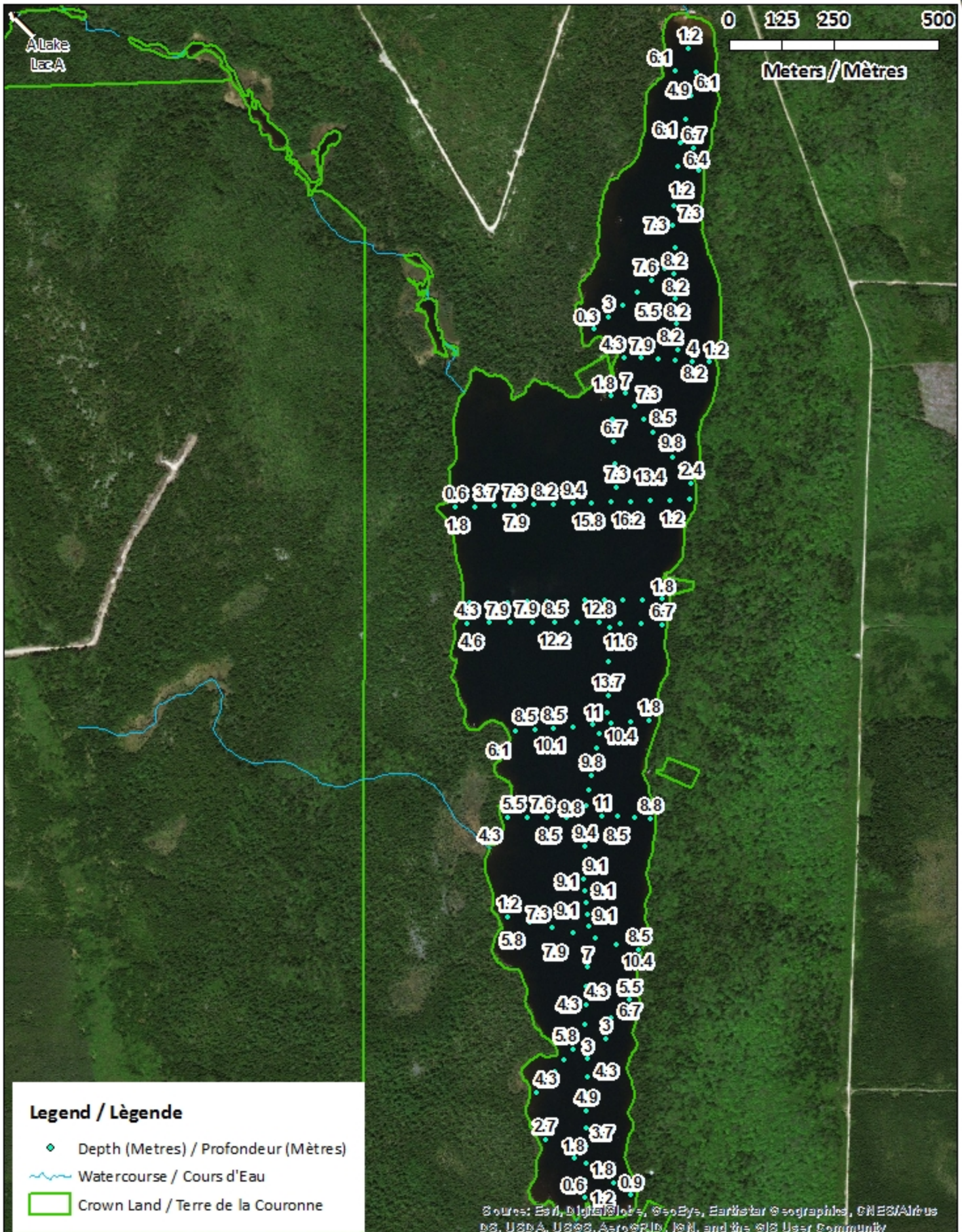
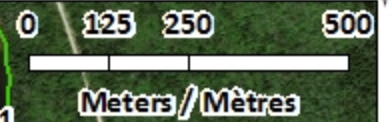
<u>Species Present</u>	<u>Espèce Présente</u>
<b>Sport Fish</b> Brook Trout Landlocked Salmon	<b>Poisson sportif</b> Truite mouchetée (Omble de fontaine) Ouananiche
<b>Non-Sport Fish</b> American Eel Blacknose Dace Common Shiner Golden Shiner Lake Chub Northern Redbelly Dace Rainbow Smelt White Sucker	<b>Poisson non sportif</b> Anguille d'Amérique Naseux noir Méné à nageoires rouges Méné jaune Méné de lac Ventre rouge du nord Éperlan arc-en-ciel Meunier noir

This lake is currently part of the fish stocking program (Landlocked Salmon).

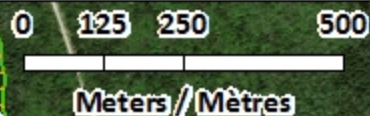
Ce lac fait actuellement partie du programme d'empoissonnement (Ouananiche)

# East Long Lake / Lac East Long

## Depth Readings (Metres) / Indications de Profondeur (Mètres)



# East Long Lake / Lac East Long Contours (Metres / Mètres)



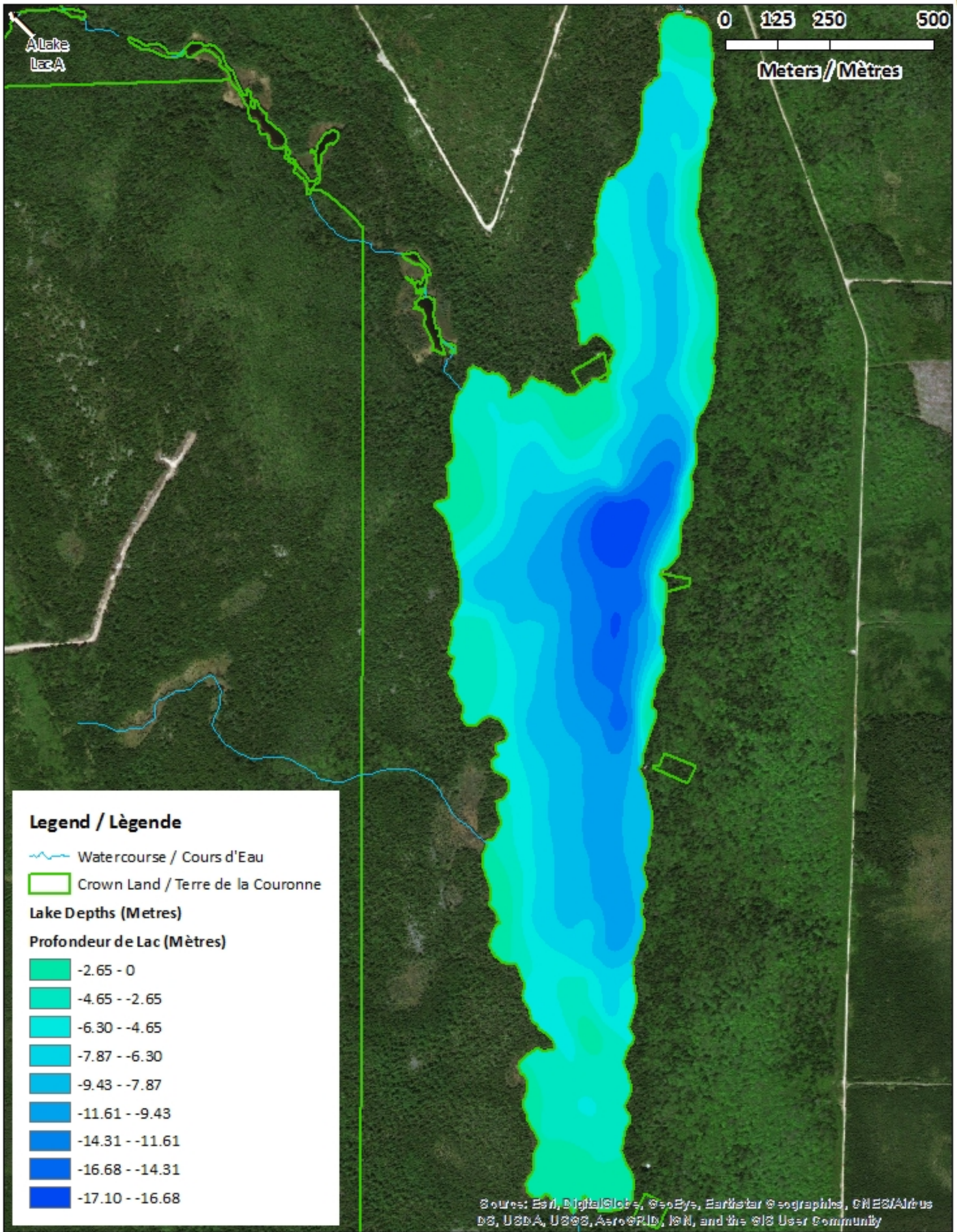
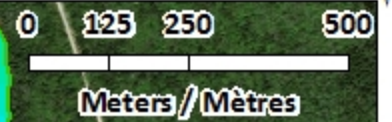
## Legend / Légende

- Contours (Metres / Mètres)
- Watercourse / Cours d'Eau
- Crown Land / Terre de la Couronne



Source: Esri, DigitalGlobe, GeoEye, Earthstar Geographics, CNES/Airbus DS, USDA, USGS, AeroGRID, IGN, and the GIS User Community

# East Long Lake / Lac East Long

## Depth (Metres) / Profondeur (Mètres)












### Legend / Légende

-  Watercourse / Cours d'Eau
-  Crown Land / Terre de la Couronne

### Lake Depths (Metres)

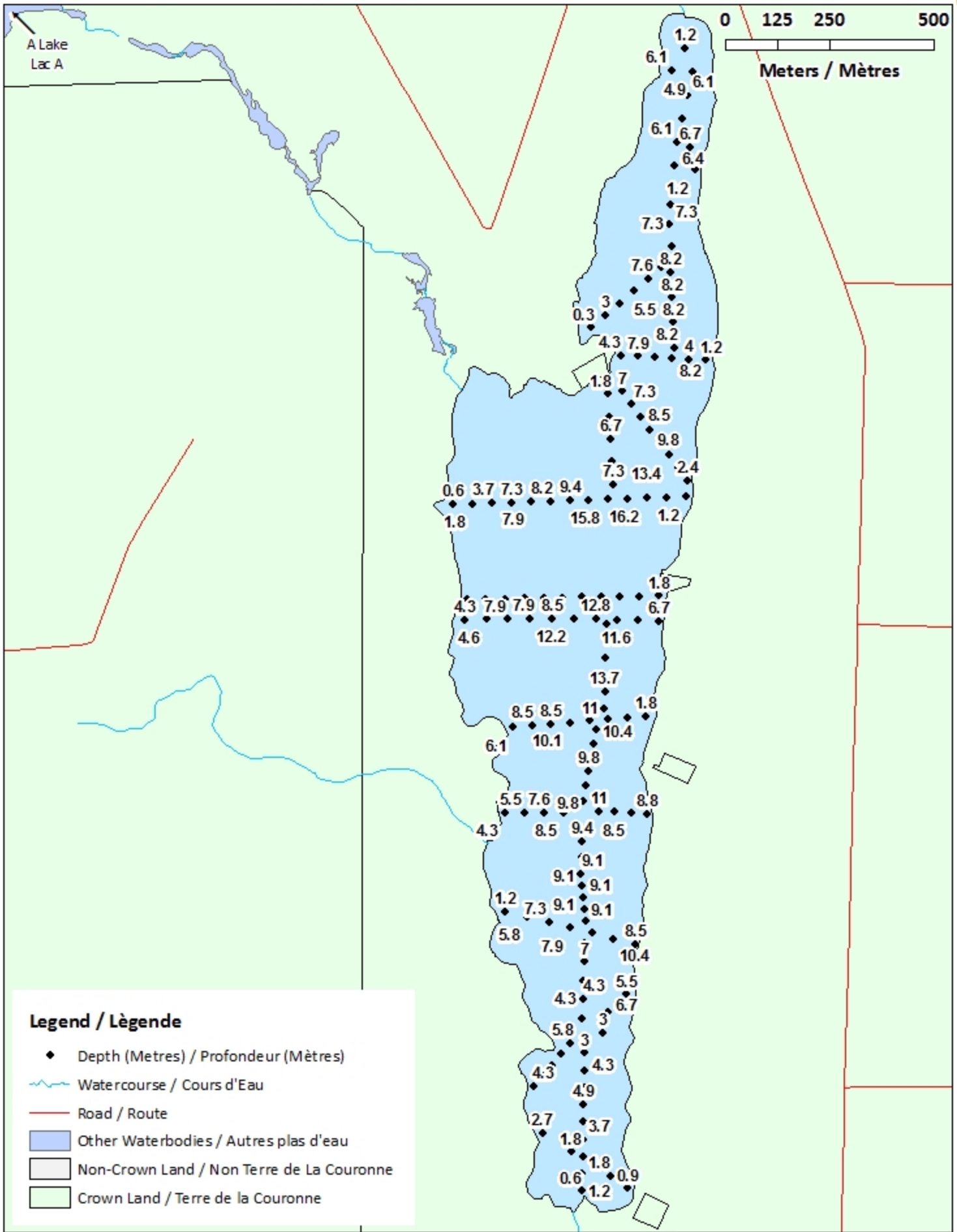
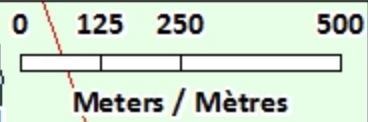
#### Profondeur de Lac (Mètres)

-  -2.65 - 0
-  -4.65 - -2.65
-  -6.30 - -4.65
-  -7.87 - -6.30
-  -9.43 - -7.87
-  -11.61 - -9.43
-  -14.31 - -11.61
-  -16.68 - -14.31
-  -17.10 - -16.68

Source: Esri, DigitalGlobe, GeoEye, Earthstar Geographics, CNES/Airbus DS, USDA, USGS, AeroGRID, IGN, and the GIS User Community

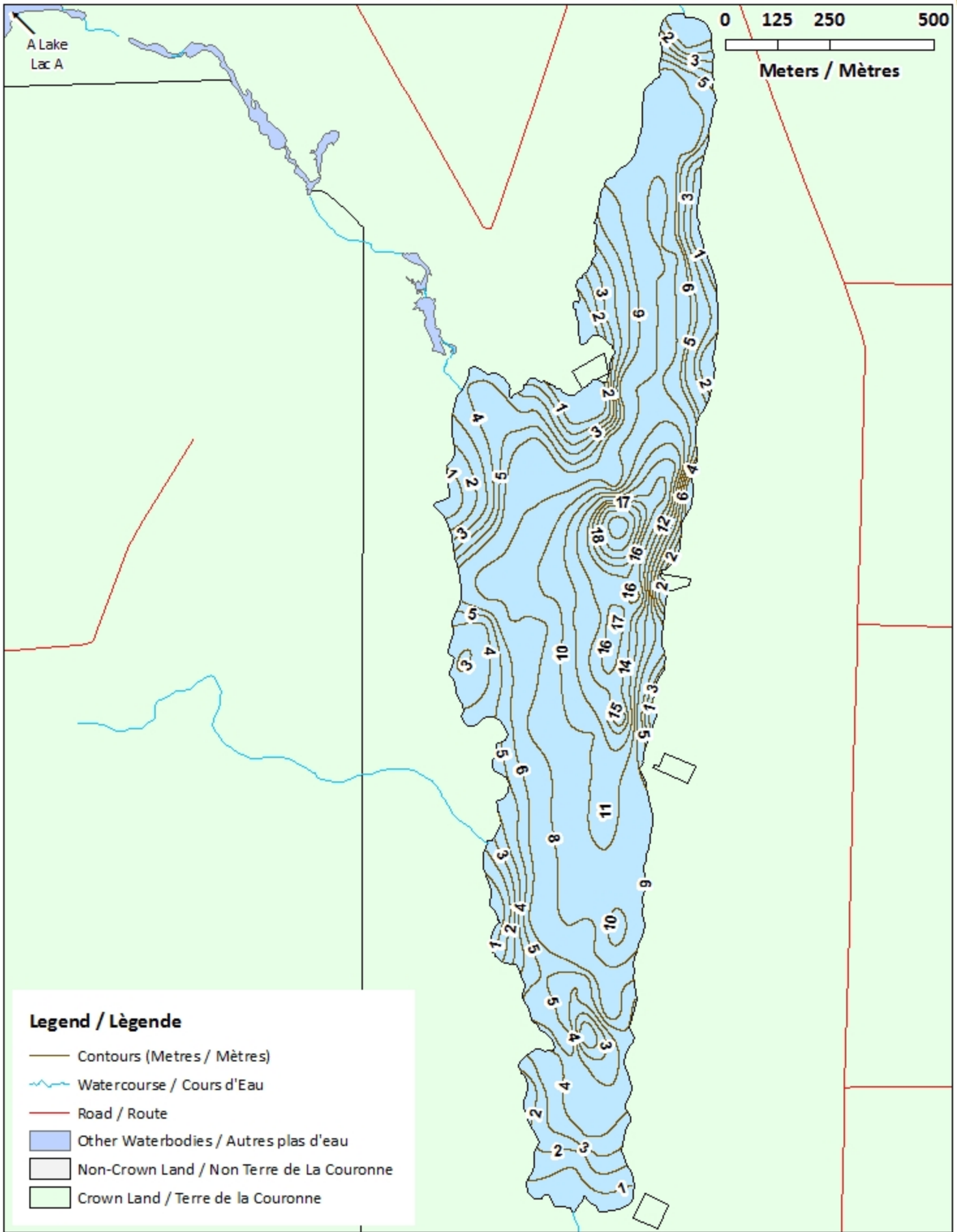
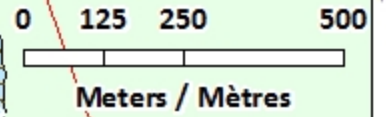
# East Long Lake / Lac East Long

## Depth Readings (Metres) / Indications de Profondeur (Mètres)



# East Long Lake / Lac East Long

## Contours (Metres / Mètres)

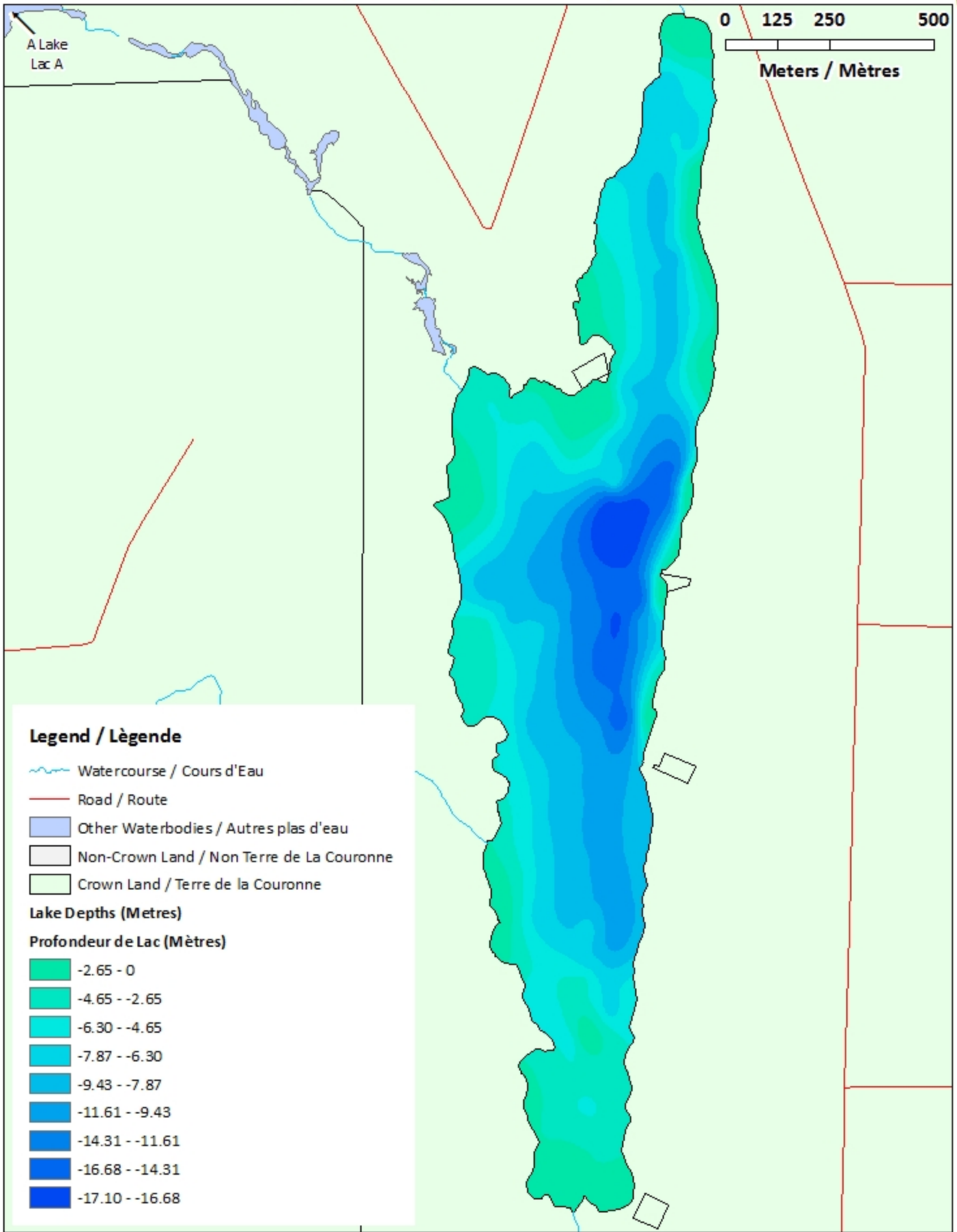
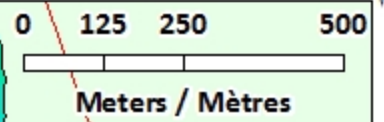


### Legend / Légende

- Contours (Metres / Mètres)
- Watercourse / Cours d'Eau
- Road / Route
- Other Waterbodies / Autres plas d'eau
- Non-Crown Land / Non Terre de La Couronne
- Crown Land / Terre de la Couronne

# East Long Lake / Lac East Long

## Depth (Metres) / Profondeur (Mètres)



### Legend / Légende

- Watercourse / Cours d'Eau
- Road / Route
- Other Waterbodies / Autres plas d'eau
- Non-Crown Land / Non Terre de La Couronne
- Crown Land / Terre de la Couronne

### Lake Depths (Metres)

#### Profondeur de Lac (Mètres)

- 2.65 - 0
- 4.65 - -2.65
- 6.30 - -4.65
- 7.87 - -6.30
- 9.43 - -7.87
- 11.61 - -9.43
- 14.31 - -11.61
- 16.68 - -14.31
- 17.10 - -16.68