

Adaptive Communities

Can Reduce Climate Change Impacts on Health



Populations at greater risk of health challenges from climate change due to social and other factors:



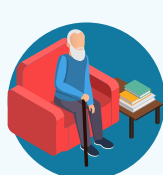
Older adults



Pregnant people and young children



People who are underhoused and socio-economically disadvantaged



Socially isolated people



People with pre-existing health issues



Systematically marginalized groups



Outdoor workers

Developed for the New Brunswick HealthADAPT Project 2022