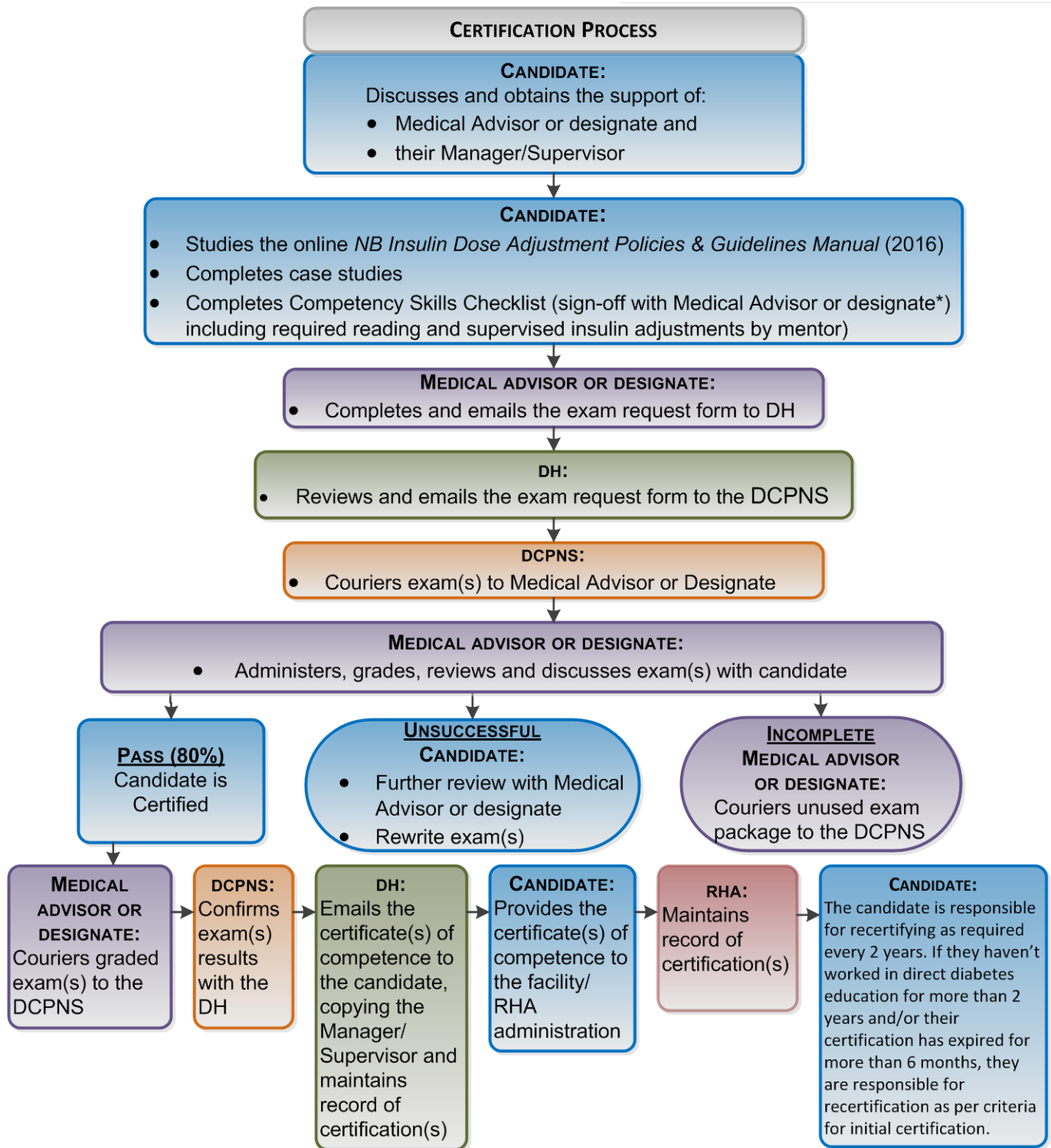


CRITERIA FOR CERTIFICATION

- Must have a minimum of 800 hours of direct diabetes education and management within the last 3 years
 - Must be a Certified Diabetes Educator*
 - Must demonstrate how the insulin adjustment program is relevant for current work
 - Must ensure the availability and support of a medical advisor (or authorized designate)
 - Must ensure that he/she has support and approval from their manager or supervisor
 - Must have studied all the course material
 - Must have completed all case studies
 - Must have completed the competency skills checklist
 - Must have successfully completed the adult exam, prior to applying for any of the specialty exams
-

***Certified Diabetes Educator (CDE®).** Certification in diabetes education is provided by the Canadian Diabetes Educator Certification Board. This certification process is a designation to include all diabetes educators. Certification is a voluntary process that allows for identification of the health care professionals who are trained, experienced, and competent in diabetes education. In order to qualify for the CDE® examination, the diabetes educator must "...be registered with a regulatory body in Canada as a health professional and have obtained a minimum of 800 hours practice in diabetes education. The minimum of 800 hours of practice in diabetes education must be completed in a 3-year period immediately prior to the application deadline. All of the above must be attained while the individual is registered with a regulatory body in Canada as a health care professional." Therefore, in meeting the eligibility criteria for the CDE® process, the candidate has established direct clinical practice exposure and has broader diabetes knowledge in preparation for insulin dose adjustment. *Source: Canadian Diabetes Educator Certification Board (www.cdecb.ca). Accessed December 2015.*

*** Designate :** A certified diabetes educator that is also certified in insulin dose adjustment with demonstrated competency and confidence who is formally appointed by the physician with a specialty in diabetes to oversee the preparation and examination for insulin dose adjustment. *To appoint a designate the medical advisor must complete the 'appointment of a designate' form.*



* **Designate** : A certified diabetes educator that is also certified in insulin dose adjustment with demonstrated competency and confidence who is formally appointed by the physician with a specialty in diabetes to oversee the preparation and examination for insulin dose adjustment. To appoint a designate the medical advisor must complete the 'appointment of a designate' form.