

## WEEKLY NEW BRUNSWICK INFLUENZA REPORT

Reporting period: April 5 to April 11 2015 (week 14)

### Summary:

**In New Brunswick, overall detections have been decreasing, most are influenza B.**

#### New Brunswick:

- There have been 55 positive influenza detections during week 14, 5 A (H3) viruses, 3 A (unsubtyped) and 47 B.
- The ILI consultation rate was 37.9 consultations per 1,000 patients visits and was above the expected level for this time of year.
- Two new influenza outbreaks were reported in nursing homes (and 2 ongoing outbreaks), as well as 1 ILI school outbreak.

#### Canada:

- Influenza B continued to be the predominant influenza virus circulating in all provinces and territories.
- The number of influenza A and B detections remained similar to the previous week. Other circulating respiratory viruses continue to decrease with the end of the 2014-2015 influenza season approaching.
- Influenza B is having a greater impact on adults less than 65 years of age, compared to influenza A (H3N2), which circulated earlier in the season.
- 683 laboratory detections of influenza were reported and the percentage of laboratory tests positive for influenza was 14.4% for week 14.
- The national ILI consultation rate was 49.4 consultations per 1,000 patients' visits, which is above the expected levels for week 14.
- 26 new influenza outbreaks were reported; 20 were in long-term care facilities, one in a hospital and 5 in other settings. There has been a higher number of reported influenza outbreaks to date this season compared to the same period in previous seasons.
- Antigenic characterization: NML has antigenically characterized 179 H3N2 viruses, 173 of which showed suboptimal match to the vaccine strain, 10 A (H1N1)pdm09 that were a match to the vaccine strain and 422 B viruses, 400 of which were a match to the vaccine strain.

#### International:

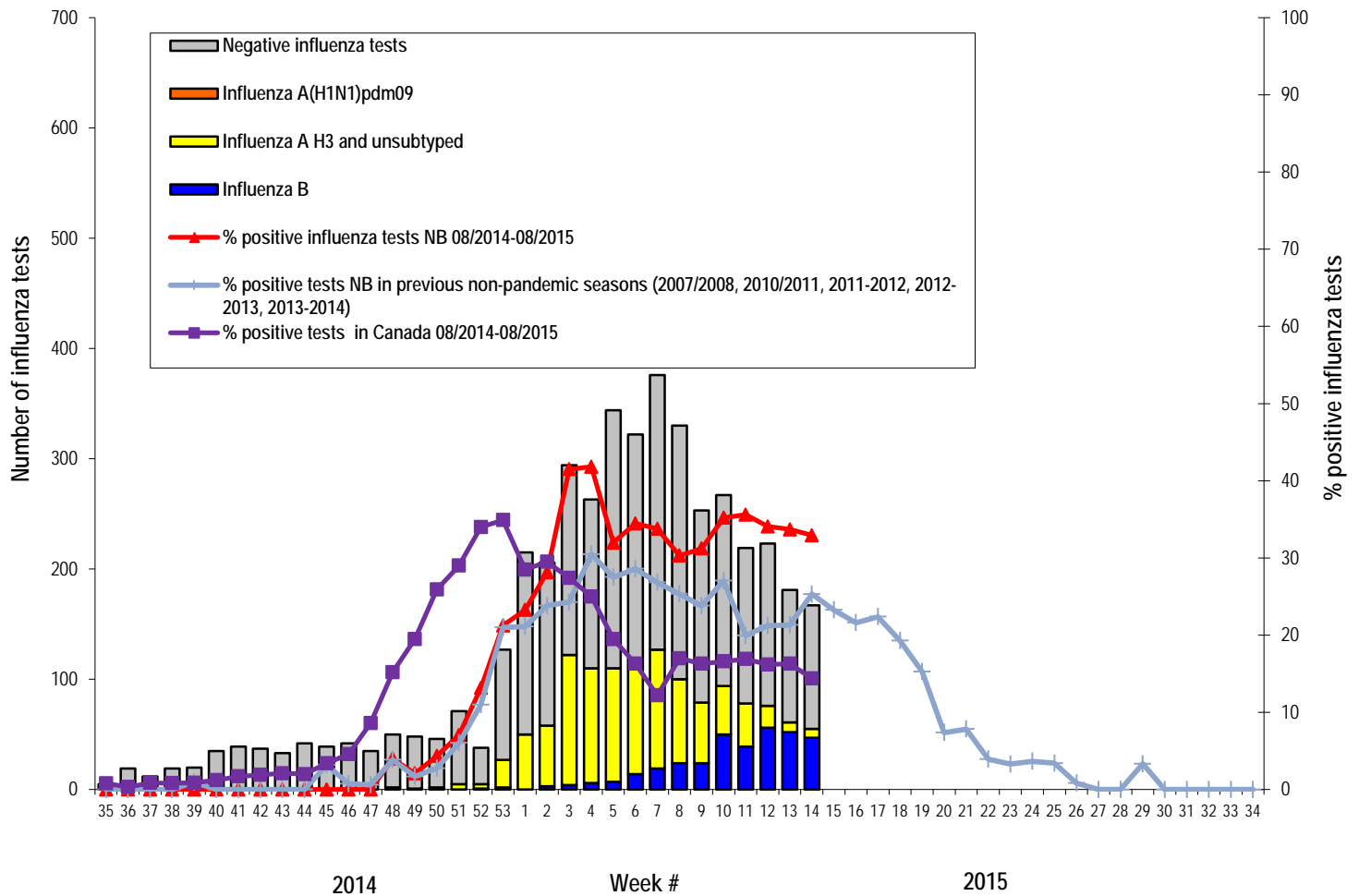
- Globally, influenza activity decreased further but remained above the seasonal threshold in the northern hemisphere. While influenza A (H3N2) viruses predominated this season, the proportion of influenza B and influenza A (H1N1)pdm09 detections increased in the last few weeks.
- Human infection with Avian Influenza: As of April 16 2015, a total of 651 laboratory-confirmed cases of human infection with an avian influenza A (H7N9) virus were reported in China (as well as in Taiwan, Hong Kong and Malaysia) including 225 deaths. The majority of cases have presented with severe acute illness, rapidly progressing to severe pneumonia. Most human cases have reported a history of exposure to poultry or live bird markets. There is currently no evidence of sustained human-to-human transmission of H7N9.
- Other Respiratory Viruses:
  - MERS-CoV: From April 2012 to April 16 2015, 1,106 laboratory-confirmed cases of MERS-CoV have been reported from 23 countries. All cases have either occurred in the Middle East or have a direct link to a primary case infected in the Middle East. Among the 1,106 cases, 421 were fatal. Investigations to identify the source of infection and routes of exposure are still ongoing. The increase in cases since December 2014 warrants close monitoring considering the surge in cases that was seen in the spring of 2014.

### 1) Influenza Laboratory Data<sup>1</sup>

- Overall influenza detections have been decreasing, most are influenza B.
- 55 influenza detections were reported during the reporting period; 5 A (H3) viruses, 3 A (unsubtyped) and 47 B.
- Since the beginning of the season, 1267 positive influenza detections were reported, 275 were A (H3), 645 were A (unsubtyped) and 347 were B viruses.

<sup>1</sup> Surveillance specimens are submitted by recruited New Brunswick Sentinel Practitioner Influenza Network (NB SPIN) practitioners, which are comprised of 8 sites in Emergency Rooms, 2 sites in Family Practice, 2 sites in First Nations communities, 1 site in a Nursing Home, 2 sites in Universities and 8 sites in Community Health Centers. Diagnostic specimens are submitted by physicians in the community/hospital setting. Influenza laboratory data is comprised of results from surveillance and diagnostic specimens. All laboratory specimens are tested using a real-time PCR assay, which is a rapid detection method designed for detection of all known variants of influenza A and B. All laboratory-confirmed cases are reported for the week when laboratory confirmation was received.

Graph 1: Number and percent of positive influenza specimens in New Brunswick by week, up to April 11 2015 (data source: G. Dumont Lab results)



Note: Most of the Influenza A untyped specimens are of the predominant strain.

**Table 1:** Positive influenza test results by Health Region, in New Brunswick for reporting week, cumulative current and previous seasons.  
(data source: G. Dumont lab results up to April 11 2015)

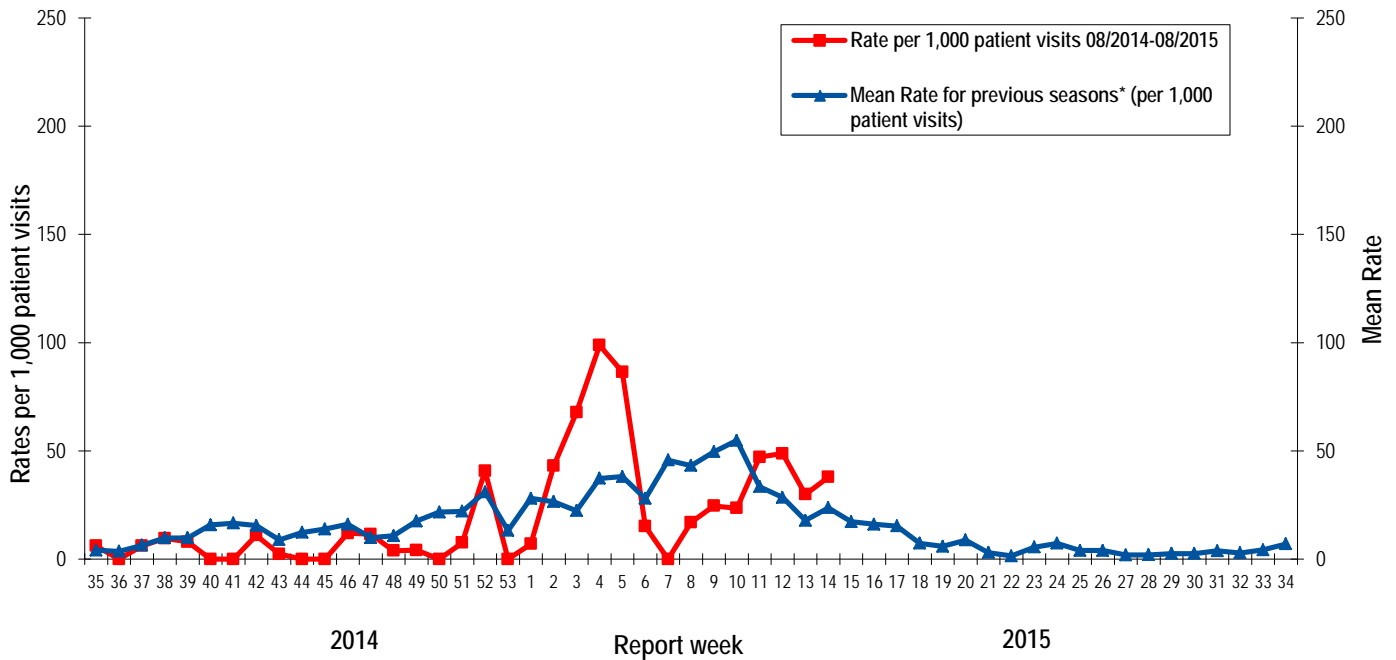
Region	Reporting period: April/05/2015–April/11/2015						Cumulative: (2014/2015 season) Aug./24/2014 –Apr./11/2015					Cumulative: (2013/2014 season) Aug./25/2013 – Aug./23/2014				
	Activity level <sup>2</sup>	A				B	A				B	A				B
		A(H3)	(H1N1) pdm09	Unsubtyped / Other	A Total	Total	A(H3)	(H1N1) pdm09	Unsubtyped / Other	A Total	Total	(H3)	(H1N1) pdm09	Unsubtyped / Other	A Total	Total
Region 1	Localized	2	0	1	3	24	83	0	344	427	209	2	205	442	649	39
Region 2	Localized	0	0	0	0	12	19	0	69	88	40	0	86	219	305	2
Region 3	Localized	0	0	0	0	4	18	0	69	87	43	0	41	80	121	4
Region 4	Sporadic	0	0	0	0	2	56	0	31	87	17	0	52	61	113	49
Region 5	Sporadic	0	0	1	1	0	8	0	14	22	2	0	10	23	33	6
Region 6	Sporadic	1	0	1	2	3	80	0	95	175	21	0	42	49	91	25
Region 7	Sporadic	2	0	0	2	2	11	0	23	34	15	0	4	11	15	3
<b>Total NB</b>		<b>5</b>	<b>0</b>	<b>3</b>	<b>8</b>	<b>47</b>	<b>275</b>	<b>0</b>	<b>645</b>	<b>920</b>	<b>347</b>	<b>2</b>	<b>440</b>	<b>885</b>	<b>1327</b>	<b>128</b>

<sup>2</sup> Influenza activity level definition is available on the PHAC FluWatch website: <http://www.phac-aspc.gc.ca/fluwatch/14-15/def14-15-eng.php>

## 2) ILI Consultation Rates<sup>3</sup>

- During week 14, the ILI consultation rate was 37.9 consultations per 1,000 patient visits which was above the expected levels for this time of year.
- During week 14, the sentinel response rate was 27%, for both the FluWatch sentinel physicians and the NB SPIN practitioners.

**Graph 2:** ILI Consultation Rates in New Brunswick, by report week, season 2014/15 compared to previous seasons\*



\* The mean rate was based on data from the 1996/97 to 2013/2014 seasons and excludes the Pandemic season (2009-2010).

## 3) ILI and Laboratory-Confirmed Outbreak Data

**Table 2:** ILI activity/outbreaks in New Brunswick nursing homes and schools for the reporting week, current and previous seasons.

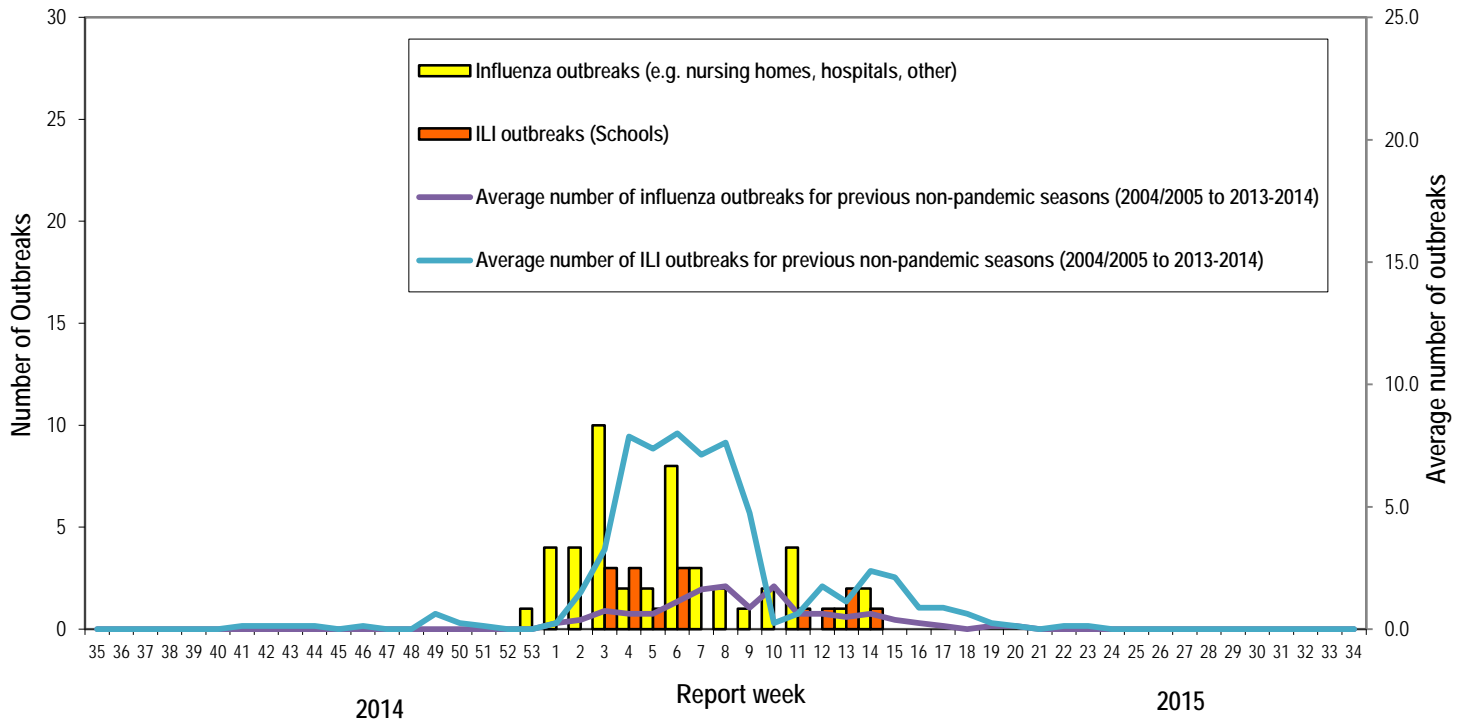
	Reporting period: April/05/2015–April/11/2015			Cumulative # of outbreaks season 2014-2015	Cumulative # of outbreaks season 2013-2014
	Lab-confirmed outbreaks in Nursing homes	ILI school outbreaks	Lab-confirmed outbreaks in Other settings		
Region 1	0 out of 13	1 out of 74	0	14	3
Region 2	1 out of 15	0 out of 81	0	14	2
Region 3	1 out of 14	0 out of 95	0	10	4
Region 4	0 out of 6	0 out of 22	0	6	1
Region 5	0 out of 2	0 out of 18	0	4	0
Region 6	0 out of 9	0 out of 35	0	5	3
Region 7	0 out of 4	0 out of 27	0	8	2
<b>Total NB</b>	<b>2 out of 63</b>	<b>1 out of 352</b>	<b>0</b>	<b>61</b>	<b>15</b>

\*Two or more ILI cases within a seven day period, including at least one laboratory-confirmed case of influenza. Outbreaks are reported in the week when laboratory confirmation is received.

\*\*Schools reporting greater than 10% absenteeism which is likely due to ILI.

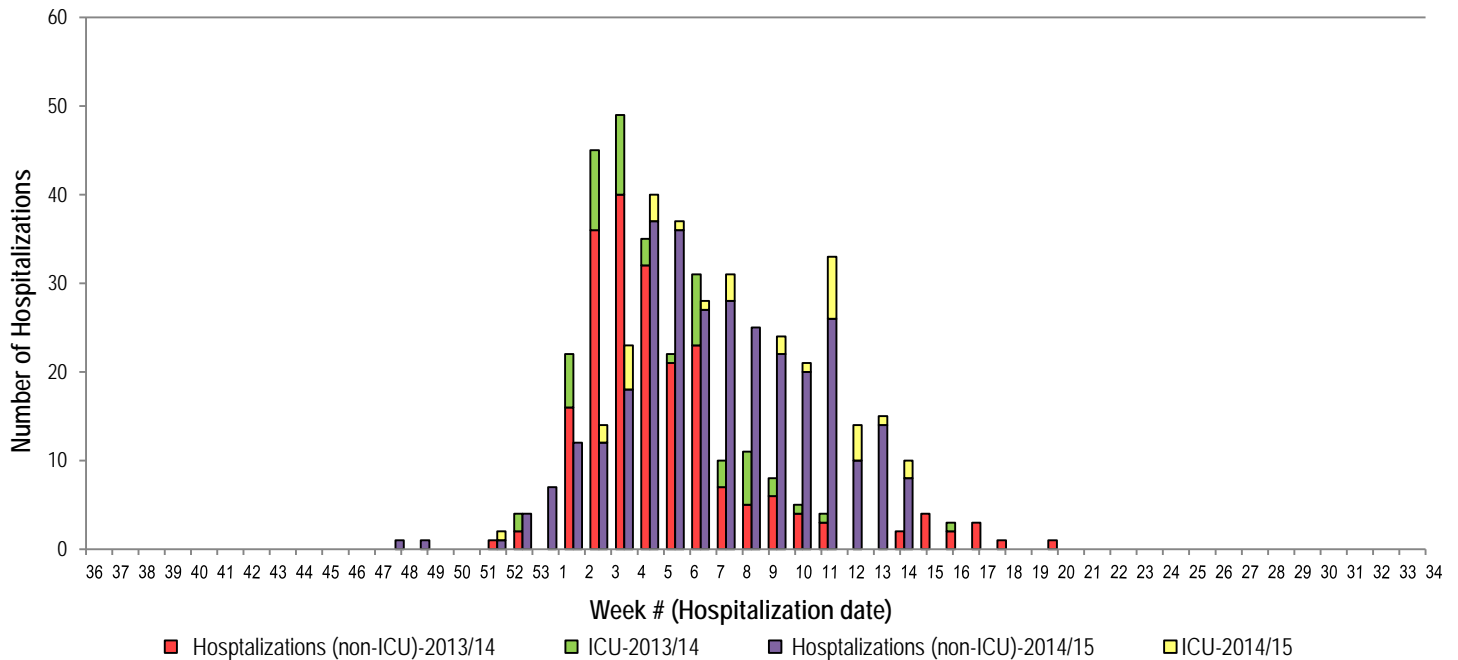
<sup>3</sup> A total of 31 practitioner sites (18 FluWatch sentinel physicians and 13 NB SPIN sites) are recruited this season to report the number of ILI patients and total patient consultations one day during a reporting week.

**Graph 3: Number of Influenza Outbreaks (nursing homes, hospitals, other)<sup>4</sup> and ILI Outbreaks (schools)<sup>5</sup> reported to Public Health in New Brunswick, by report week, season 2014/15.**



**4) Influenza associated Hospitalization<sup>4</sup> and Death<sup>5</sup> Surveillance<sup>6</sup>**

**Graph 4: Influenza associated Hospitalizations and ICU admissions in New Brunswick, by week of hospitalization for current and past season.\***



\*Those who had been hospitalized 15 days or more prior to laboratory confirmation date were excluded from the graph

\*\* Twenty-one deaths have been reported so far in season 2014-2015.

<sup>4</sup> Hospitalizations (including ICU admissions) are influenza associated; they may or may not be due to influenza.

<sup>5</sup> Deaths are influenza associated; influenza may not be the direct cause of death.

<sup>6</sup> In early January 2014, the Office of the Chief Medical Officer of Health implemented a new provincial surveillance system in collaboration with the Regional Health Authorities to monitor influenza-associated hospitalizations, intensive care unit admissions and deaths.

National Flu Watch Program - Additional information on influenza activity in Canada and around the world is available on the Public Health Agency of Canada's website at: <http://www.phac-aspc.gc.ca/fluwatch/>

Other Links:

World: [http://www.who.int/influenza/surveillance\\_monitoring/updates/latest\\_update\\_GIP\\_surveillance/en/index.html](http://www.who.int/influenza/surveillance_monitoring/updates/latest_update_GIP_surveillance/en/index.html)

Europe: [http://www.ecdc.europa.eu/en/healthtopics/seasonal\\_influenza/epidemiological\\_data/Pages/Weekly\\_Influenza\\_Surveillance\\_Overview.aspx](http://www.ecdc.europa.eu/en/healthtopics/seasonal_influenza/epidemiological_data/Pages/Weekly_Influenza_Surveillance_Overview.aspx)

PAHO: [http://new.paho.org/hq/index.php?option=com\\_content&task=blogcategory&id=805&Itemid=569](http://new.paho.org/hq/index.php?option=com_content&task=blogcategory&id=805&Itemid=569)

Australia: <http://www.health.gov.au/internet/main/publishing.nsf/Content/cda-surveil-ozflu-flucurr.htm>

New Zealand: [http://www.surv.esr.cri.nz/virology/influenza\\_weekly\\_update.php](http://www.surv.esr.cri.nz/virology/influenza_weekly_update.php)

Argentina: : <http://www.msal.gov.ar/>

South Africa: <http://www.nicd.ac.za/>

US: [www.cdc.gov/flu/weekly/](http://www.cdc.gov/flu/weekly/)

Prepared by the Communicable Disease Control Unit  
Office of the Chief Medical Officer of Health, Tel: (506) 444-3044