

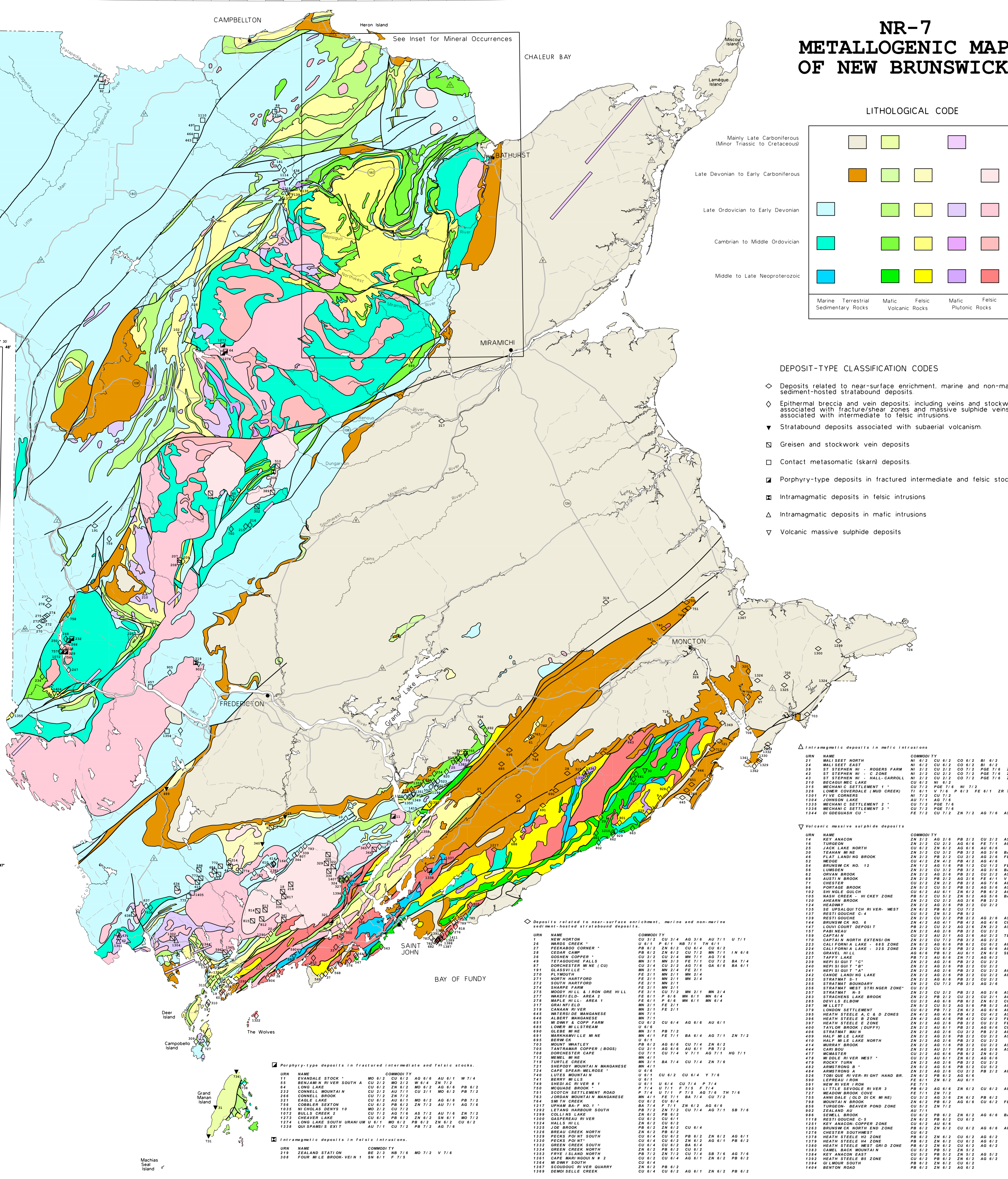
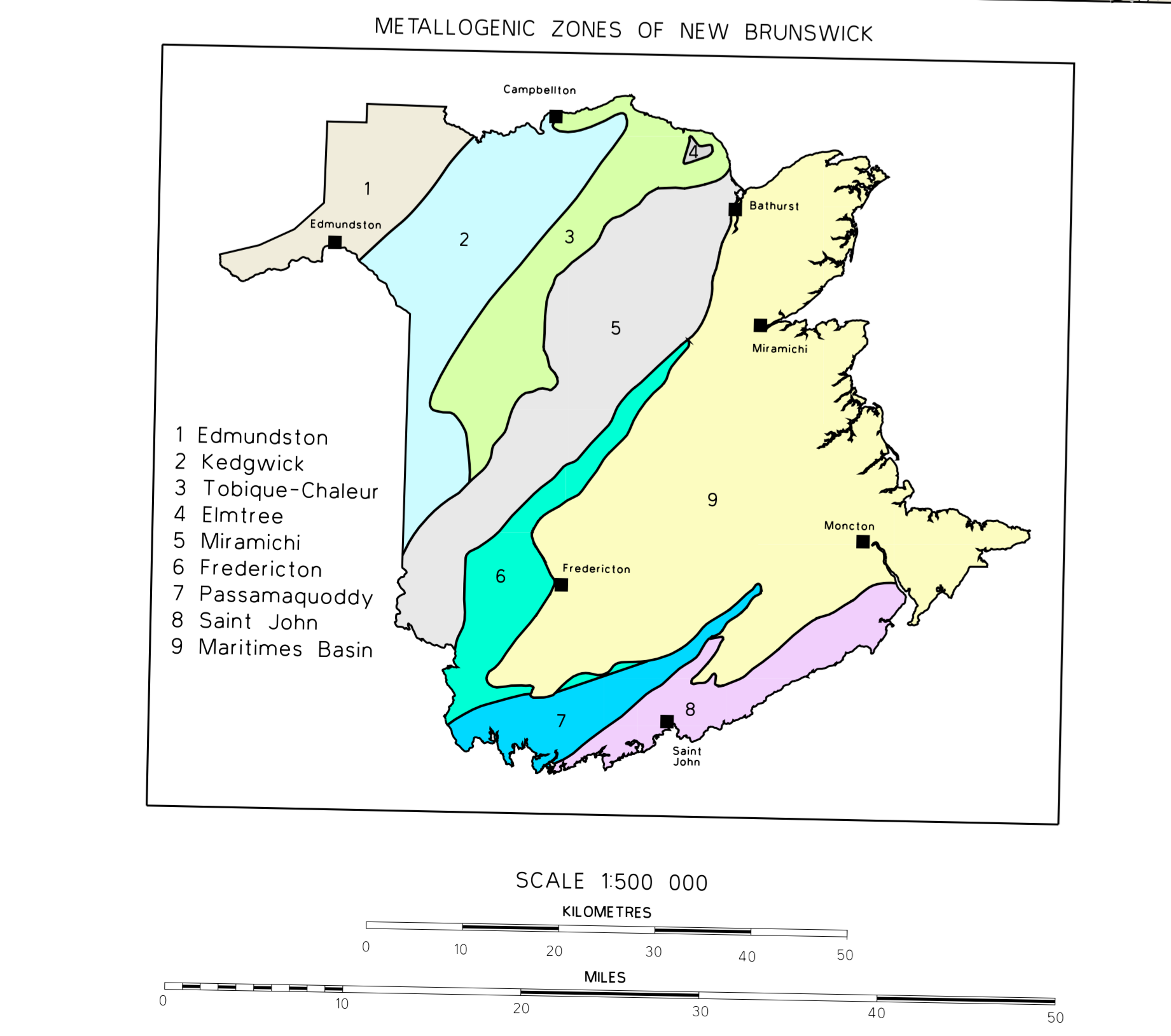
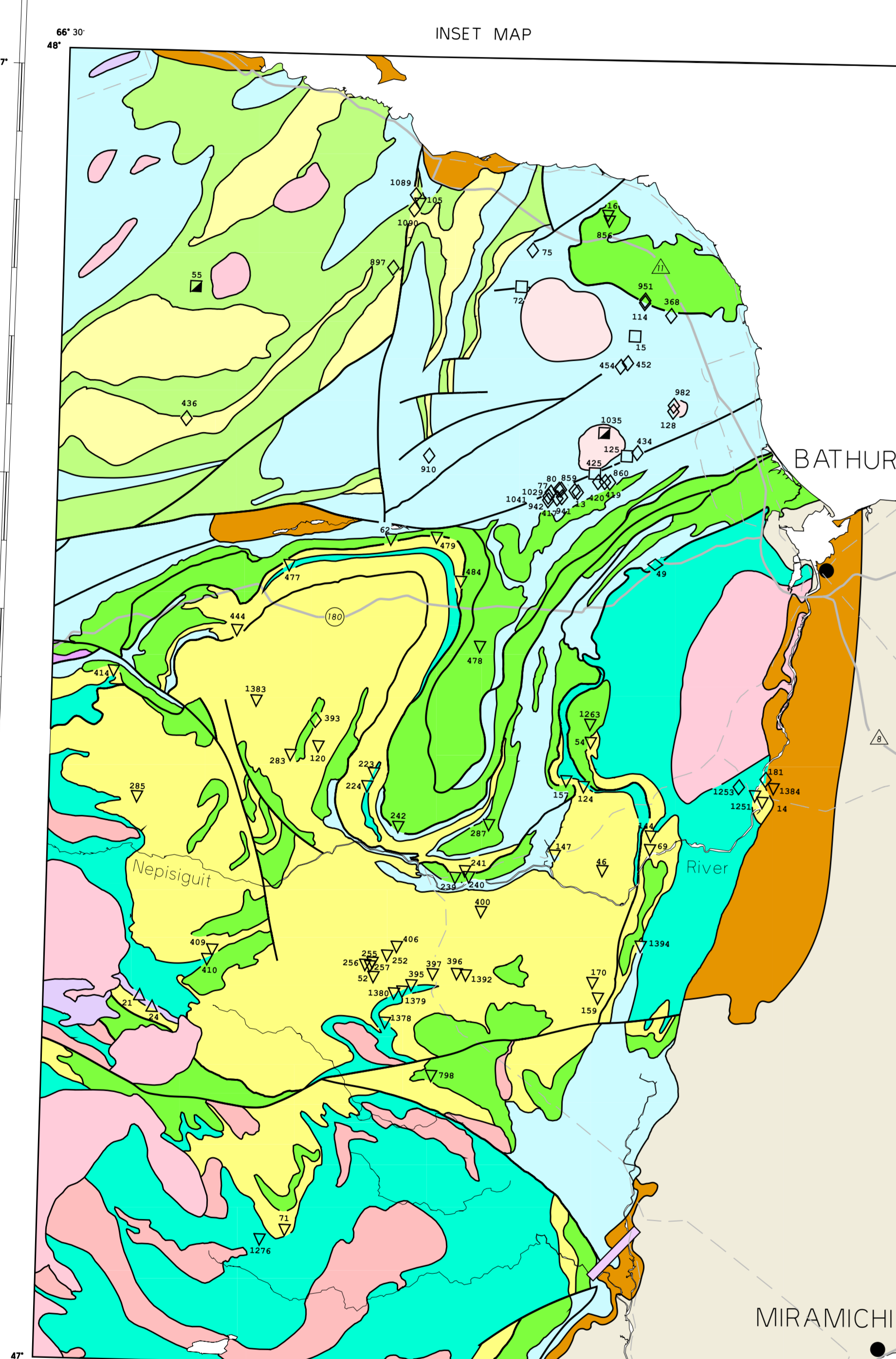
NR-7 METALLOGENIC MAP OF NEW BRUNSWICK

This metallogenic map of New Brunswick has been prepared from published maps of the Minerals and Energy Division, New Brunswick Department of Natural Resources and Energy. The map is intended to provide a simplified overview of the tectonic and metallogenic evolution of the province. It is based on the metallogenic map of New Brunswick (NR-1) at a scale of 1:500,000. In order to maintain clarity at this scale, some simplification of the bedrock geology from map NR-1 was required. Mineral occurrences shown on this map are taken from the New Brunswick Mineral Occurrence File and include only occurrences that are coded as STATUS 1-5, with the exception of the area of northern New Brunswick included in the inset, where for clarity mineral occurrences with status 5 were included. S.R. McCulloch and M.P. Renick compiled the map with the assistance of S.A. Martin and J.A. Walker.

The base map was reproduced from digital topographic base maps from Service New Brunswick Digitization by K.J. MeserEAU, DM. Roberts and M.P. Renick.

This map is published with the permission of L.R. Fyfe, Director of the New Brunswick Geological Surveys Branch.

RECOMMENDED CITATION
New Brunswick Department of Natural Resources and Energy, 2002
NR-7 Metallogenic Map of New Brunswick, Minerals and Energy Division
Scale 1:500,000



LITHOLOGICAL CODE

Light Blue	Light Green	Light Purple
Orange	Light Yellow	Light Pink
Light Blue	Light Green	Light Purple
Light Blue	Light Green	Light Purple
Light Blue	Light Green	Light Purple

Marine Sedimentary Rocks Mafic Volcanic Rocks Felsic Volcanic Rocks Mafic Plutonic Rocks Felsic Plutonic Rocks

- ### DEPOSIT-TYPE CLASSIFICATION CODES
- ◇ Deposits related to near-surface enrichment, marine and non-marine sediment-hosted stratabound deposits
 - ◇ Epithermal breccia and vein deposits, including veins and stockworks associated with intracutaneous zones and massive sulphide veins associated with intracutaneous to felsic intrusions
 - ▽ Stratabound deposits associated with subaerial volcanism
 - Greisen and stockwork vein deposits
 - Contact metamorphic (skarn) deposits
 - ▣ Porphyry-type deposits in fractured intermediate and felsic stocks
 - ▣ Intramagmatic deposits in felsic intrusions
 - △ Intramagmatic deposits in mafic intrusions
 - ▽ Volcanic massive sulphide deposits

- ### Stratabound deposits associated with subaerial volcanism
- | URN NAME | COMMODITY |
|-------------------------|---------------------------|
| 180 BLOOD COVE | CU 6/2 AU 6/1 FE 7/1 |
| 488 DUCK LAKE | U 6/1 P 7/5 |
| 489 YORK MILLS | U 6/6 PE 7/2 F 6/5 FE 7/1 |
| 620 WEST MEL SETTLEMENT | CU 7/1 CU 7/2 |
| 736 NORTHERN HEAD | CU 7/1 CU 7/2 |

- ### Greisen and stockwork vein deposits
- | URN NAME | COMMODITY |
|-----------------------------------|------------------------------------|
| 18 DE WAPRONTMENT LAKE | MO 6/2 SK 6/1 W 6/4 AU 6/6 P 7/5 |
| 19 MOUNT PLEASANT-FINE TOWER ZONE | SM 6/1 W 7/4 CU 7/2 MO 7/2 FE 7/1 |
| 46 BURNI HILL TUNSTON | W 3/4 SK 3/1 MO 3/2 BE 7/3 P 7/6 |
| 200 SIBSON BROOK ZONES 1 & 2 | W 6/1 AU 6/2 ZN 6/2 PE 6/2 BA 6/2 |
| 201 EAST LONG LAKE | SM 6/1 CU 7/2 W 6/4 BA 6/6 LI 6/6 |
| 202 MOUNTAIN LAKE | MO 6/2 W 7/3 W 6/4 CU 7/2 AS 7/2 |
| 203 MCLAN BROOK NORTH | MO 6/2 W 7/3 W 6/4 CU 7/2 AS 7/2 |
| 204 SQUAKE LAKE | W 7/4 AS 7/2 MO 7/2 SM 7/1 PE 7/2 |
| 205 DEER LAKE | CU 6/2 AU 6/2 |
| 206 DEEP LAKE | CU 6/2 SK 6/1 MO 6/2 AS 7/2 P 7/5 |
| 207 BURNI HILL LAKE - A, B, C | W 6/4 SK 6/1 MO 6/2 AS 7/2 P 7/5 |
| 208 VICTORIA LAKE | CU 6/2 AS 6/2 MO 6/2 BA 6/1 PE 6/2 |
| 209 ROCK LAKE | CU 6/2 AS 6/2 MO 6/2 BA 6/1 PE 6/2 |
| 210 MCKEL LAKE | W 7/6 P 7/4 ZN 7/6 P 7/5 SN 7/1 |
| 211 TROOP LAKE PLUTON EAST | SM 6/1 CU 7/2 F 7/5 MO 7/2 PE 7/4 |
| 212 DUNDY LAKE | SM 6/1 CU 7/2 F 7/5 MO 7/2 PE 7/4 |
| 213 KEDDON GRANT TAIL | SM 6/2 MO 7/2 W 7/1 BI 7/6 P 7/2 |
| 214 LITTLE JOHN LAKE | SM 6/1 MO 7/2 W 7/1 BI 7/6 P 7/2 |
| 215 GALLIP LAKE A, E | SM 6/1 MO 7/2 W 7/1 BI 7/6 P 7/2 |
| 216 SHERBROOK TAIL | SM 6/1 MO 7/2 W 7/1 BI 7/6 P 7/2 |
| 217 TRUE HILL | SM 6/1 MO 7/2 W 7/1 BI 7/6 P 7/2 |
| 218 LITTLE MOUNT PLEASANT | SM 6/2 PE 6/2 MO 6/2 W 6/4 P 7/5 |
| 219 SMT LAKE | SM 6/1 AS 6/2 CU 7/2 F 7/5 |
| 220 BURNI HILL BROOK | SM 7/1 CU 7/2 ZN 7/2 AS 7/2 |
| 221 MANDON BROOK | SM 7/1 CU 7/2 ZN 7/2 AS 7/2 |
| 222 MOUNT PLEASANT NORTH ZONE | SM 7/1 CU 7/2 ZN 7/2 AS 7/2 |
| 223 CHRIS WEN LAKE NORTH | AU 7/1 AU 7/6 CU 7/2 |

- ### Contact metamorphic (skarn) deposits
- | URN NAME | COMMODITY |
|-----------------------|------------------------------------|
| 173 BELLEVUE POND | CU 6/2 PE 6/2 AS 6/6 PE 6/1 CU 6/2 |
| 174 PATRICK NORTH | CU 6/2 CU 6/2 PE 6/2 AS 6/6 AS 7/2 |
| 175 PATRICK SOUTH | CU 6/2 CU 6/2 PE 6/2 AS 6/6 AS 7/2 |
| 176 BERTHIAUME COPPER | CU 2/2 AS 6/2 FE 7/1 ZN 7/2 MO 7/2 |
| 177 BURNI HILL SKARN | CU 6/2 AU 6/2 AS 6/6 PE 6/2 AU 6/2 |
| 178 MCKEL LAKE SKARN | CU 6/2 AU 6/2 AS 6/6 PE 6/2 AU 6/2 |
| 179 MCKEL LAKE SKARN | CU 6/2 AU 6/2 AS 6/6 PE 6/2 AU 6/2 |
| 180 MCKEL LAKE SKARN | CU 6/2 AU 6/2 AS 6/6 PE 6/2 AU 6/2 |
| 181 MCKEL LAKE SKARN | CU 6/2 AU 6/2 AS 6/6 PE 6/2 AU 6/2 |
| 182 MCKEL LAKE SKARN | CU 6/2 AU 6/2 AS 6/6 PE 6/2 AU 6/2 |
| 183 MCKEL LAKE SKARN | CU 6/2 AU 6/2 AS 6/6 PE 6/2 AU 6/2 |
| 184 MCKEL LAKE SKARN | CU 6/2 AU 6/2 AS 6/6 PE 6/2 AU 6/2 |
| 185 MCKEL LAKE SKARN | CU 6/2 AU 6/2 AS 6/6 PE 6/2 AU 6/2 |
| 186 MCKEL LAKE SKARN | CU 6/2 AU 6/2 AS 6/6 PE 6/2 AU 6/2 |
| 187 MCKEL LAKE SKARN | CU 6/2 AU 6/2 AS 6/6 PE 6/2 AU 6/2 |
| 188 MCKEL LAKE SKARN | CU 6/2 AU 6/2 AS 6/6 PE 6/2 AU 6/2 |
| 189 MCKEL LAKE SKARN | CU 6/2 AU 6/2 AS 6/6 PE 6/2 AU 6/2 |
| 190 MCKEL LAKE SKARN | CU 6/2 AU 6/2 AS 6/6 PE 6/2 AU 6/2 |
| 191 MCKEL LAKE SKARN | CU 6/2 AU 6/2 AS 6/6 PE 6/2 AU 6/2 |
| 192 MCKEL LAKE SKARN | CU 6/2 AU 6/2 AS 6/6 PE 6/2 AU 6/2 |
| 193 MCKEL LAKE SKARN | CU 6/2 AU 6/2 AS 6/6 PE 6/2 AU 6/2 |
| 194 MCKEL LAKE SKARN | CU 6/2 AU 6/2 AS 6/6 PE 6/2 AU 6/2 |
| 195 MCKEL LAKE SKARN | CU 6/2 AU 6/2 AS 6/6 PE 6/2 AU 6/2 |
| 196 MCKEL LAKE SKARN | CU 6/2 AU 6/2 AS 6/6 PE 6/2 AU 6/2 |
| 197 MCKEL LAKE SKARN | CU 6/2 AU 6/2 AS 6/6 PE 6/2 AU 6/2 |
| 198 MCKEL LAKE SKARN | CU 6/2 AU 6/2 AS 6/6 PE 6/2 AU 6/2 |
| 199 MCKEL LAKE SKARN | CU 6/2 AU 6/2 AS 6/6 PE 6/2 AU 6/2 |
| 200 MCKEL LAKE SKARN | CU 6/2 AU 6/2 AS 6/6 PE 6/2 AU 6/2 |

Chemical Class Codes in the Commodity Field

CODE	CHEMICAL CLASS
1	Native element, alloy, oxide or hydroxide
2	Sulfide, sulfosalt, arsenide, telluride, antimonide
3	Sulfate, carbonate, phosphate, tungstate, borate, molybdate, chromate, vanadate
4	Halide
5	Not known