

Dog Waste Stations Project

The Red Dot Association of Shediac Bay

Submitted October 28, 2018 by:

Andy Malolepszy Pierre Wedge Helen Wedge Art Melanson Trudy Brydges



Submitted October 28, 2018 by:

Andy Malolepszy

Purpose:

The dog waste stations in the Point-du-Chêne area are a result of a community initiative started in 2017 under the leadership of the RED DOT ASSOCIATION and funded by the Department of Environment and local Government (DELG). In response to the water quality issues at Parlee and surrounding beaches, a group of concerned citizens met to discuss what they could do to help. Addressing the issue of dog waste littering the beaches and nearby trails seemed to be a good place to start. To that end, a dog waste station prototype was designed by members of the Red Dot Association and a request for funding was sent and approved by DELG.

One of the recommendations from last year was to continue to offer this service again in 2018 and into the future. Conscientiously DELG approved and provided funding again this year. In addition, DELG requested that the dog waste project be extended to surrounding areas. Additional waste stations were built and installed in neighboring Beaubassin Est, Cap Pêle, Cormier Village and Aboujagane, details of which will be included in this report.

The usage of these stations has increased over last season. This proves, once again, that the stations are popular and effective. Clean trails and beach areas are what people want and expect. The stations collected 9000 poop bags or approximately 9600 lbs over the summer. The amount is a 30% increase over 2017.

Non-dog waste garbage being tossed into the bins continues to be an issue. However, this is sort of a positive problem as at least it is not being littered on surrounding areas. Vandalism was not an issue this year.

A local resident was paid to do weekly maintenance on the stations. This involved emptying the bins and replenishing bags as needed. The bins were removed, cleaned and stored for the winter as part of the maintenance.

Fourteen (14) waste stations have been installed and maintained at Parlee Beach Park, non-park beach entrances, the Wharf and the surrounding trails. Eleven (11) stations were installed and maintained in Beaubassin Est, Cap Pêle, Cormier Village and Aboujagane, Again These stations were installed at selected entrances to the beaches, nearby trails and at Pointe-du-Chene Wharf.

Educational materials were mailed out alerting the public of adverse health effects of uncontained dog feces. Materials were locally sourced and all signage was bilingual.

Summary:

It is felt that the stations were well used this summer based on the number of dog waste bags used and the fullness of bins on garbage pick-up days. Positive feedback was heard from the public (both dog and non-dog owners). Management/ staff of Parlee Beach Provincial Park, Vision H2O and the Community of Beaubassin-Est.

There was the expected misuse, initially, of the garbage bins (household waste, fast food containers, cans, bottles ...). Decals indicating "dog waste only" helped to improve proper usage although the problem did persist at one station on the west side.

The Red Dot Association would like to thank the public for using these stations which helped to keep the beaches and trails cleaner. A huge thank you also to the staff at the Provincial Park, the staff at Pointe-du-Chêne Wharf, the staff of Ocean Surf Campground and private citizens from Beaubassin-Est, Cormier Village and Aboujagane who made sure the bins were emptied and bags replenished as needed. Much of this was voluntary. And thanks for the support of Kevin Gould from the Department of Environment and Local Government.

Recommendations for 2019:

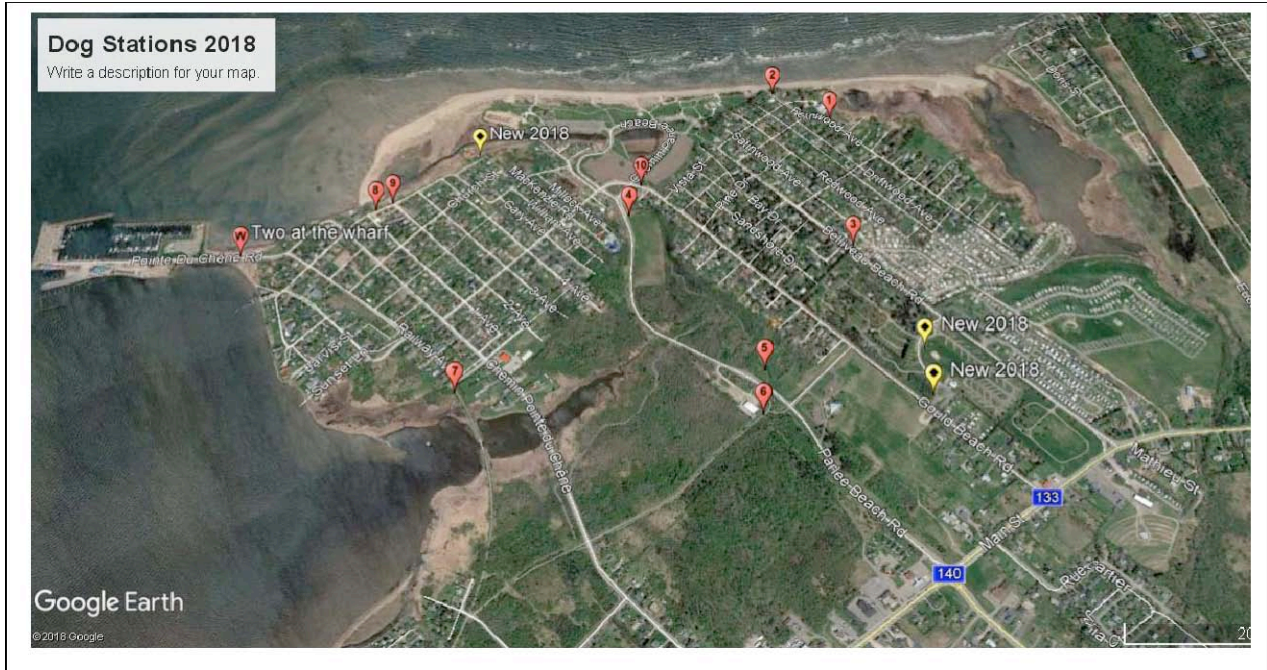
- Provide this seasonal service on a permanently funded basis
- Hire staff to do weekly maintenance.
- Continue to promote the use of these dog waste stations through educational material and social media.

Comments:

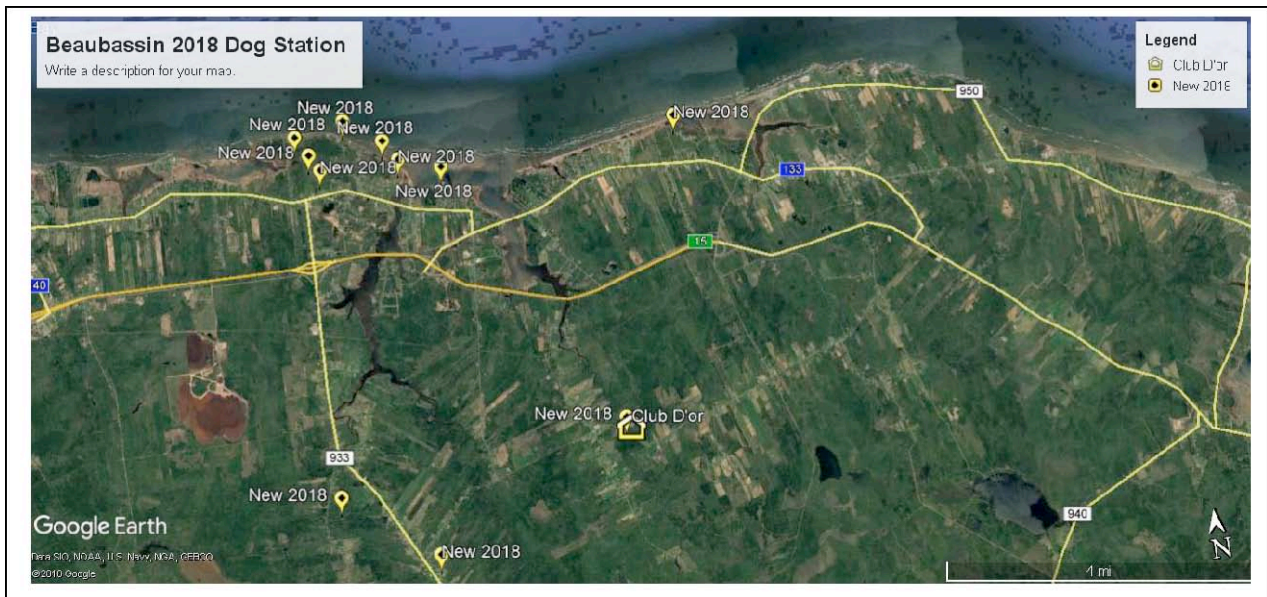
"The dog waste stations were an excellent addition to the new trail; they were tastefully installed and maintained and brought attention to the fact that all fecal waste needs to be accounted for in our beautiful yet vulnerable watersheds." Michael Chawick.Vision H2O

"Je te remerci pour ton beau travail nous n'avons pas eu aucun dechets de chiens dans les sentier grace au poubelle. » Andre Bourque, conseiller Beaubassin-Est

"I believe this project has had a positive impact. It helps with maintaining the cleanliness of the park as it provides the public with the ability to dispose their dog's waste. We here at the Parp approve of the project. It's very beneficial for the environment and it enhances the experience for the patrons." Gilmond Savoie, Park Manager, Parlee Beach Provincial Park.



Locations Pointe-du Chêne



Locations Beaubassin Est