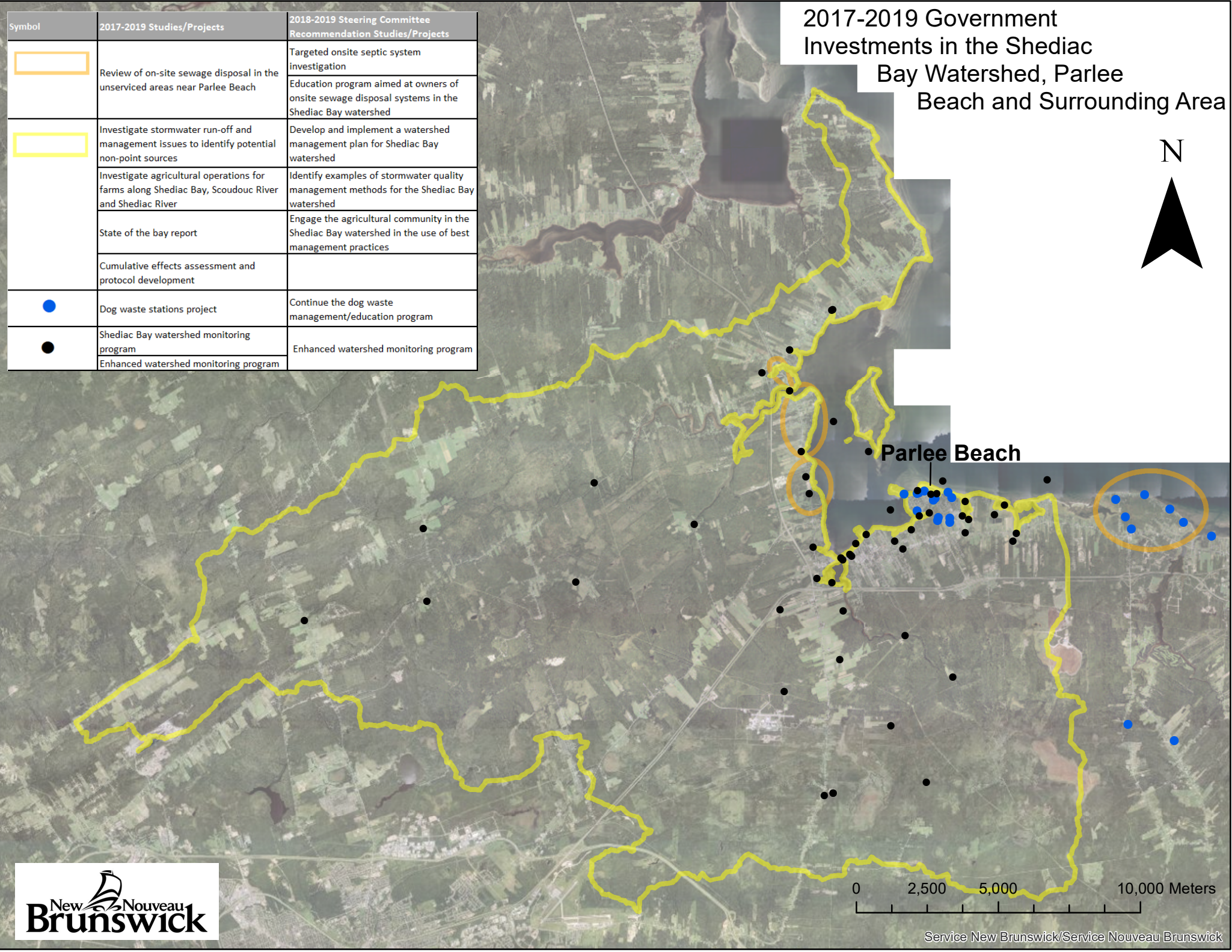


2017-2019 Government Investments in the Shediac Bay Watershed, Parlee Beach and Surrounding Area



Symbol	2017-2019 Studies/Projects	2018-2019 Steering Committee Recommendation Studies/Projects
	Review of on-site sewage disposal in the unserviced areas near Parlee Beach	Targeted onsite septic system investigation Education program aimed at owners of onsite sewage disposal systems in the Shediac Bay watershed
	Investigate stormwater run-off and management issues to identify potential non-point sources	Develop and implement a watershed management plan for Shediac Bay watershed
	Investigate agricultural operations for farms along Shediac Bay, Scoudouc River and Shediac River	Identify examples of stormwater quality management methods for the Shediac Bay watershed
	State of the bay report	Engage the agricultural community in the Shediac Bay watershed in the use of best management practices
	Cumulative effects assessment and protocol development	
	Dog waste stations project	Continue the dog waste management/education program
	Shediac Bay watershed monitoring program	Enhanced watershed monitoring program
	Enhanced watershed monitoring program	



0 2,500 5,000 10,000 Meters

